

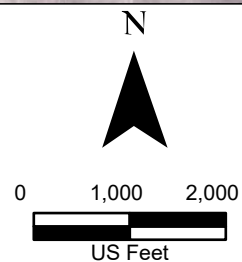


Legend:

-  Drain Flow
-  Study Corridor





**Exhibit 4B
Alternative 1
Aerial Photograph (1972)
Sheet 1 of 20
Raymondville Drain Project**

Author : Joel F. Aguirre Updated : 10/5/2023

DISCLAIMER: RRP Consulting Engineers makes no guarantees as to the accuracy of data used in the construction of this map.



Legend:

-  Drain Flow
-  Study Corridor

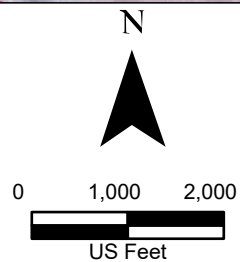
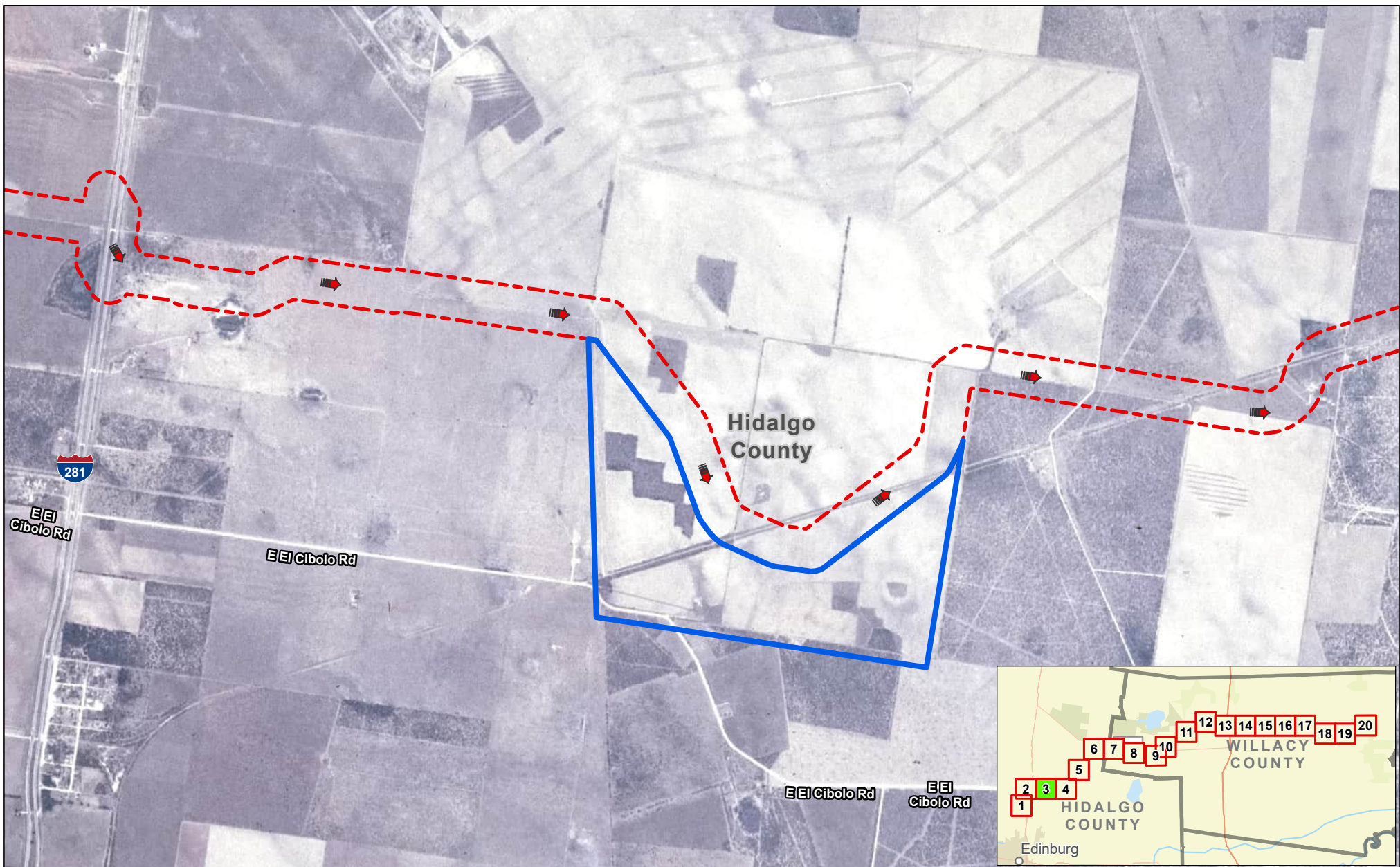





Exhibit 4B Alternative 1 Aerial Photograph (1972) Sheet 2 of 20 Raymondville Drain Project

Author : Joel F. Aguirre Updated : 10/5/2023

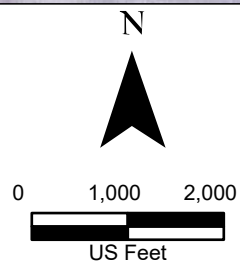
DISCLAIMER: RRP Consulting Engineers makes no guarantees as to the accuracy of data used in the construction of this map.



Legend:

-  Drain Flow
-  Study Corridor
-  Proposed Detention Basin

Data Provenance: NAIP World Aerial Imagery (1972)

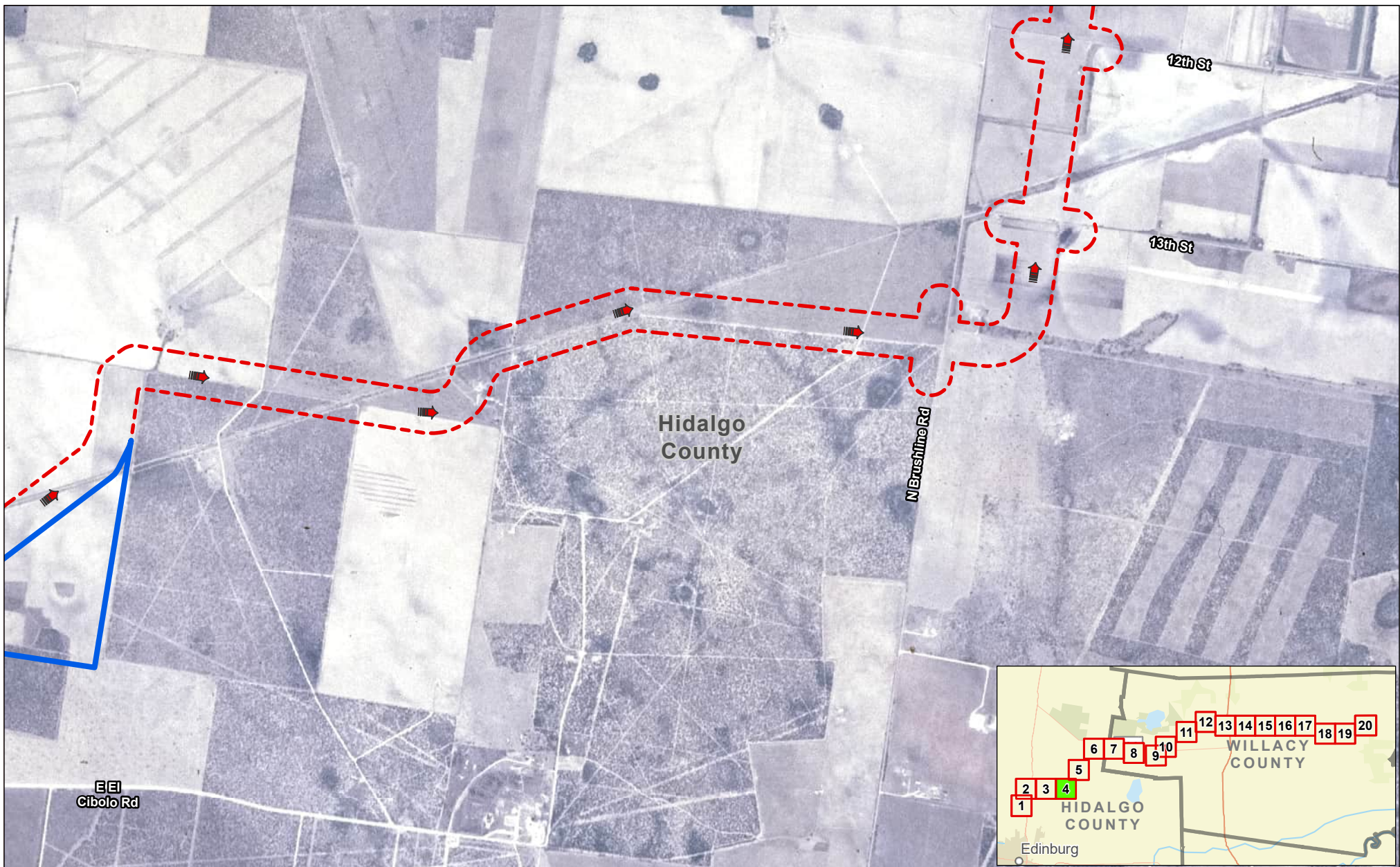


**Exhibit 4B
Alternative 1
Aerial Photograph (1972)
Sheet 3 of 20
Raymondville Drain Project**

Author : Joel F. Aguirre Updated : 10/5/2023

DISCLAIMER: RRP Consulting Engineers makes no guarantees as to the accuracy of data used in the construction of this map.

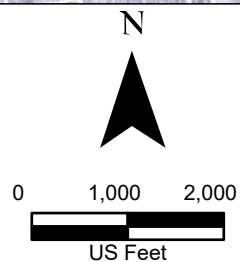
Path: D:\projects\408000\01_Raymondville\GIS\Map_Series.aprx



Legend:

- Drain Flow
- Study Corridor
- Proposed Detention Basin

Data Provenance: NAIP World Aerial Imagery (1972)

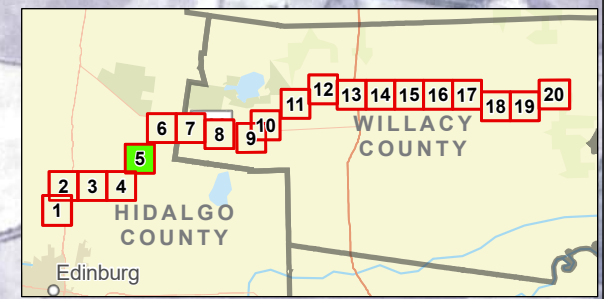
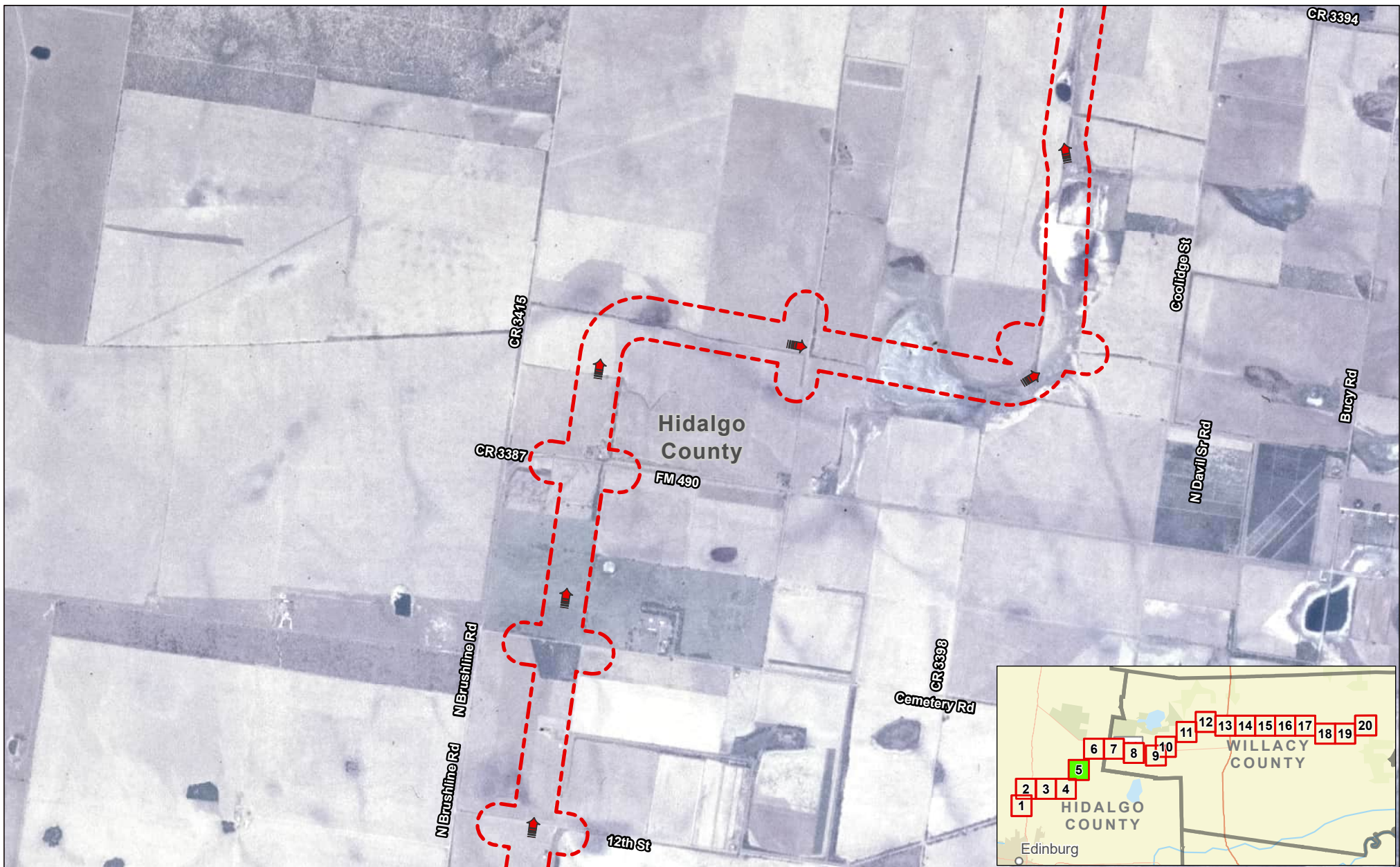


**Exhibit 4B
Alternative 1
Aerial Photograph (1972)
Sheet 4 of 20
Raymondville Drain Project**



Author : Joel F. Aguirre Updated : 10/5/2023

DISCLAIMER: RRP Consulting Engineers makes no guarantees as to the accuracy of data used in the construction of this map.

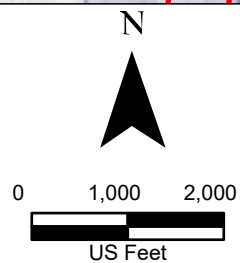
Path: S:\projects\40808\RAI_Project\Raymondville\GIS\RAI_Sheet4toEnd_Series.aprx



Legend:

-  Drain Flow
-  Study Corridor

Data Provenance: NAIP World Aerial Imagery (1972)



**Exhibit 4B
Alternative 1
Aerial Photograph (1972)
Sheet 5 of 20
Raymondville Drain Project**



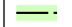
Author : Joel F. Aguirre Updated : 10/5/2023

DISCLAIMER: RRP Consulting Engineers makes no guarantees as to the accuracy of data used in the construction of this map.

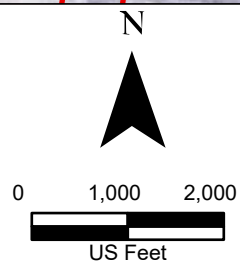
Path: S:\projects\40808\RA1_Project\Raymondville\GIS\RA1_Sheet-05-End_Series.aprx



Legend:

-  Drain Flow
-  Study Corridor
-  County Boundary

Data Provenance: NAIP World Aerial Imagery (1972)



**Exhibit 4B
Alternative 1
Aerial Photograph (1972)
Sheet 6 of 20
Raymondville Drain Project**




Author : Joel F. Aguirre Updated : 12/12/2023

DISCLAIMER: RRP Consulting Engineers makes no guarantees as to the accuracy of data used in the construction of this map.

Path: D:\projects\408000000_P\raymondville\GIS\Map_Series.aprx



Legend:

-  Drain Flow
-  Study Corridor
-  County Boundary

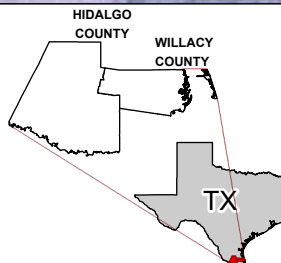
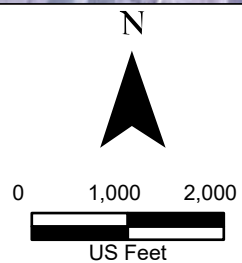
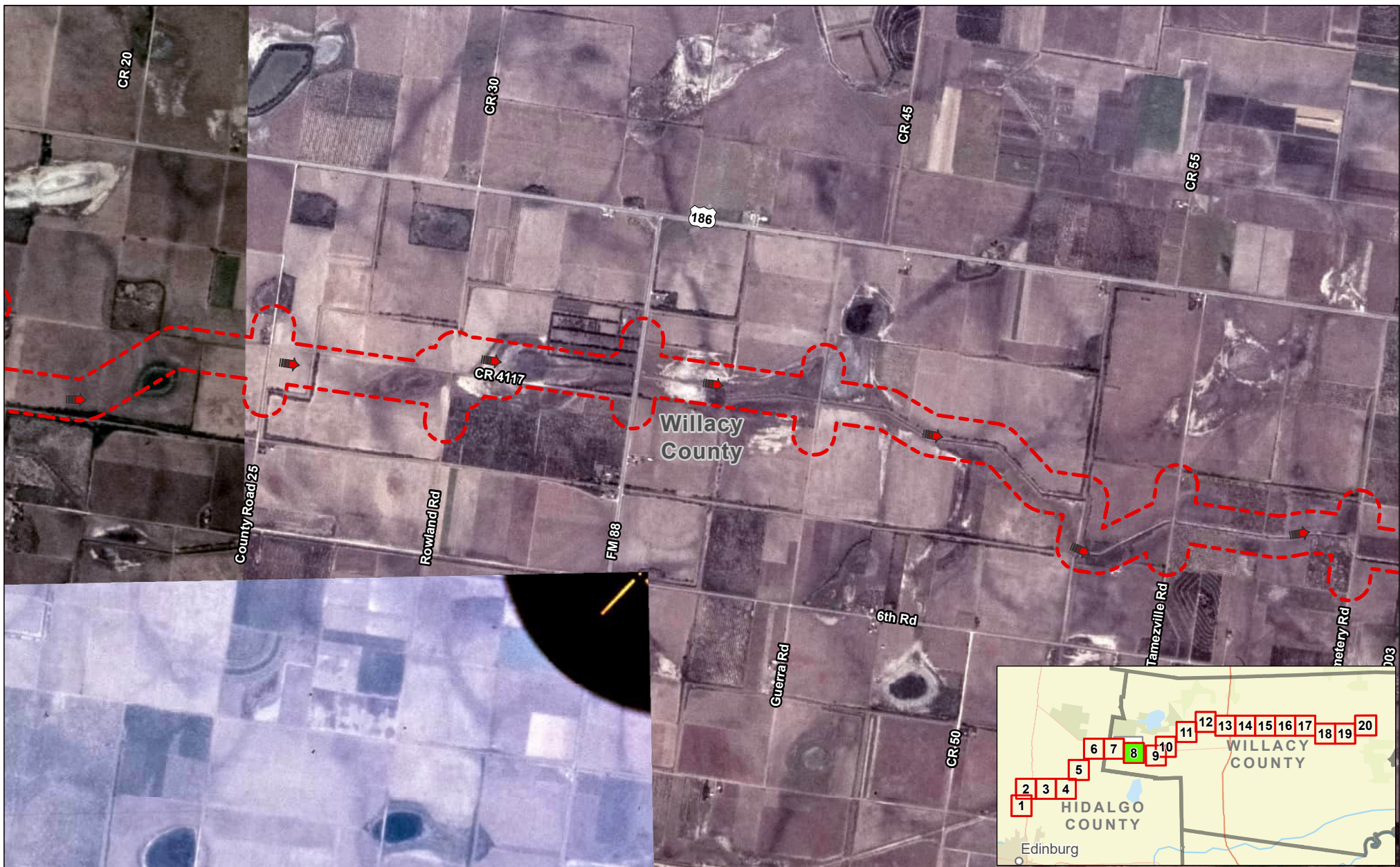




Exhibit 4B Alternative 1 Aerial Photograph (1972) Sheet 7 of 20 Raymondville Drain Project

Author : Joel F. Aguirre Updated : 12/12/2023

DISCLAIMER: RRP Consulting Engineers makes no guarantees as to the accuracy of data used in the construction of this map.



Legend:

-  Drain Flow
-  Study Corridor

Data Provenance: NAIP World Aerial Imagery (1972)

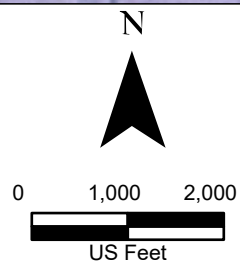
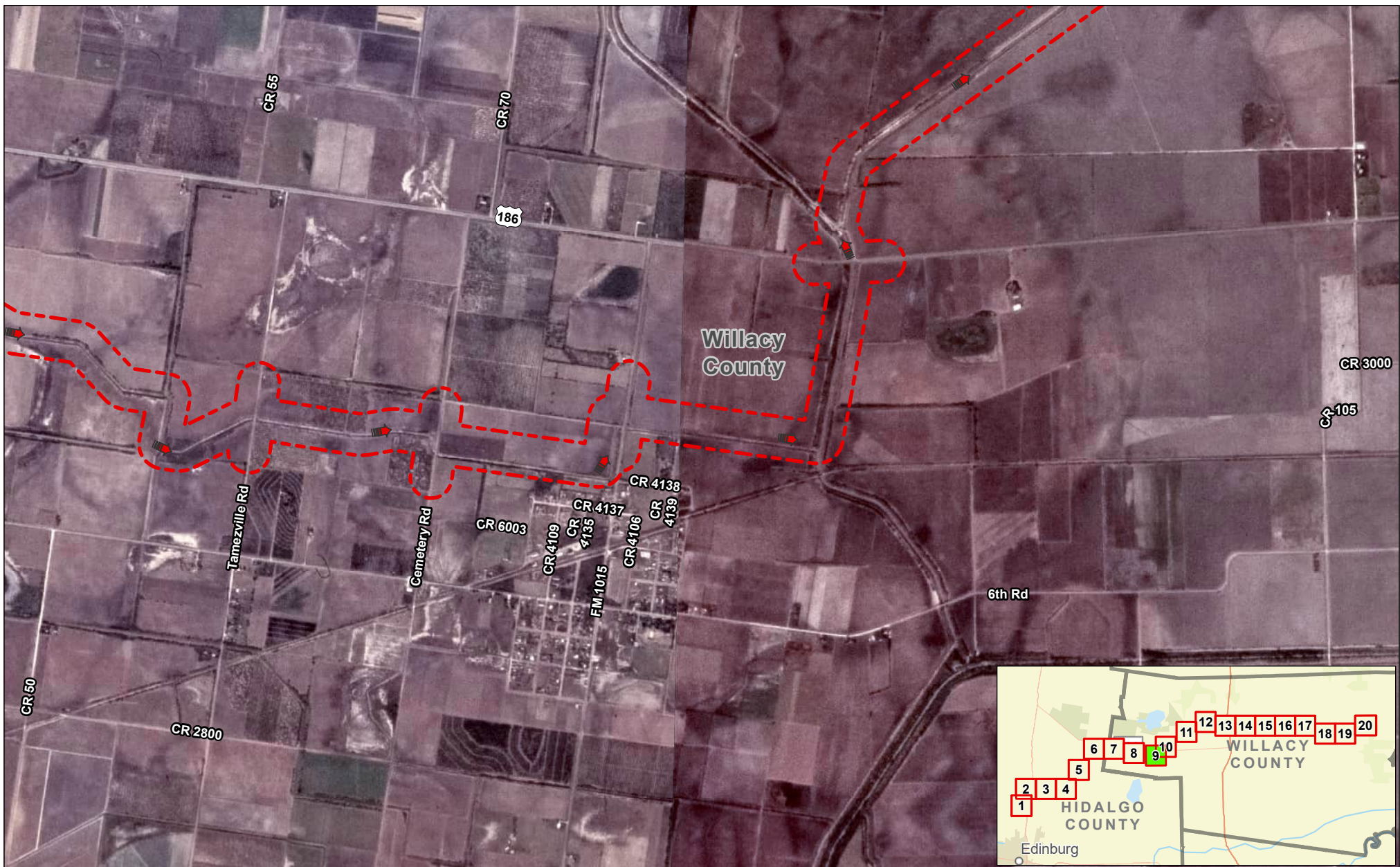


Exhibit 4B **Alternative 1** **Aerial Photograph (1972)** **Sheet 8 of 20** **Raymondville Drain Project**



Author : Joel F. Aguirre Updated : 10/5/2023

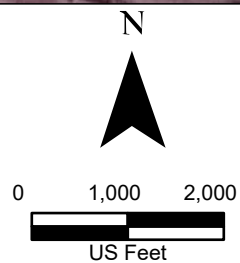
DISCLAIMER: RRP Consulting Engineers makes no guarantees as to the accuracy of data used in the construction of this map.

Path: D:\projects\44088\RAIP\ProjectRepository\GIS\RAIP_Sheet-to-Sheet_Series.aprx



Legend:

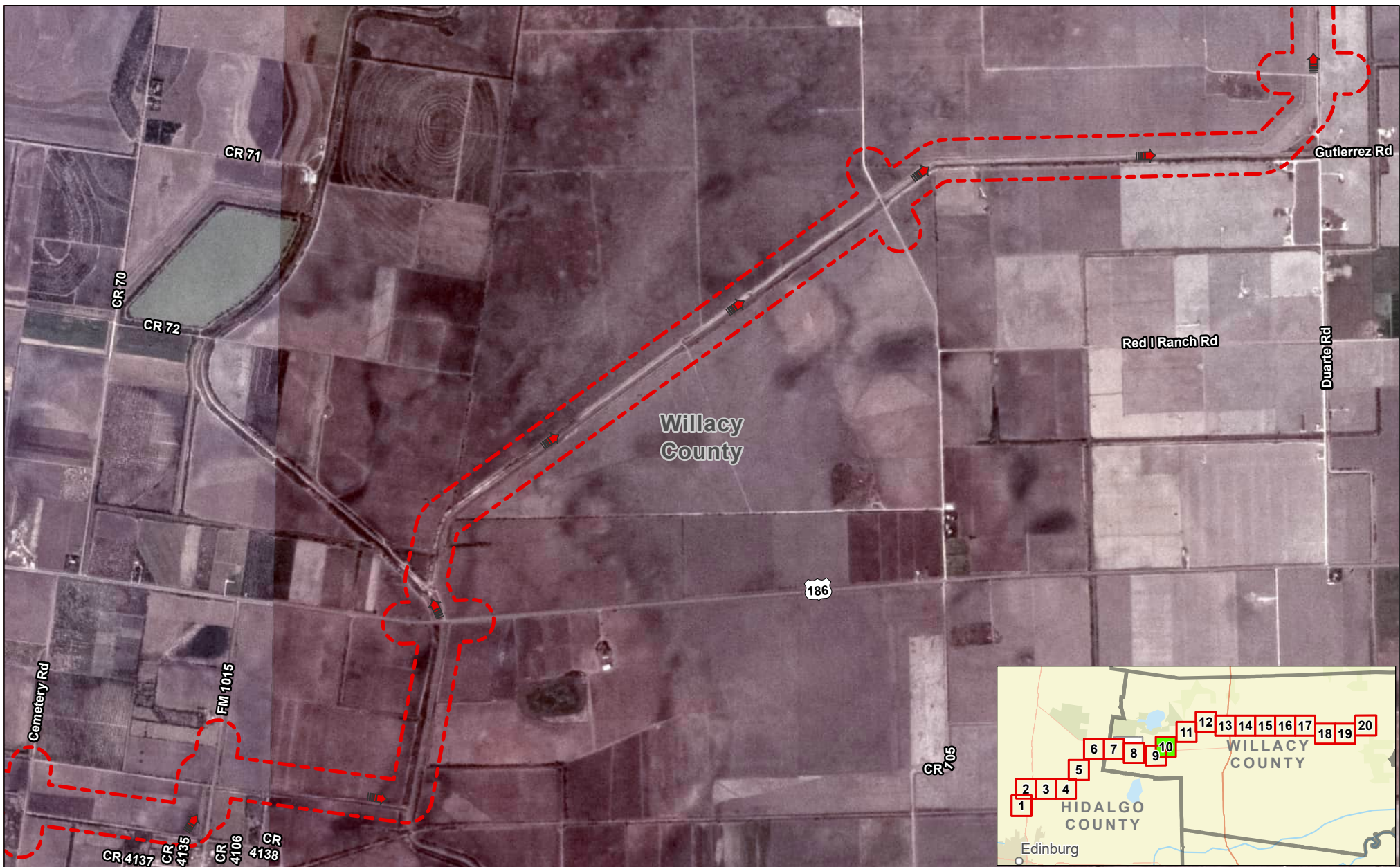
-  Drain Flow
-  Study Corridor





**Exhibit 4B
Alternative 1
Aerial Photograph (1972)
Sheet 9 of 20
Raymondville Drain Project**

Author : Joel F. Aguirre Updated : 10/5/2023

DISCLAIMER: RRP Consulting Engineers makes no guarantees as to the accuracy of data used in the construction of this map.



Legend:

-  Drain Flow
-  Study Corridor

Data Provenance: NAIP World Aerial Imagery (1972)

N



0 1,000 2,000



US Feet

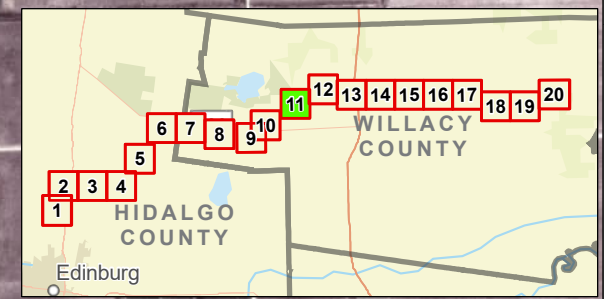
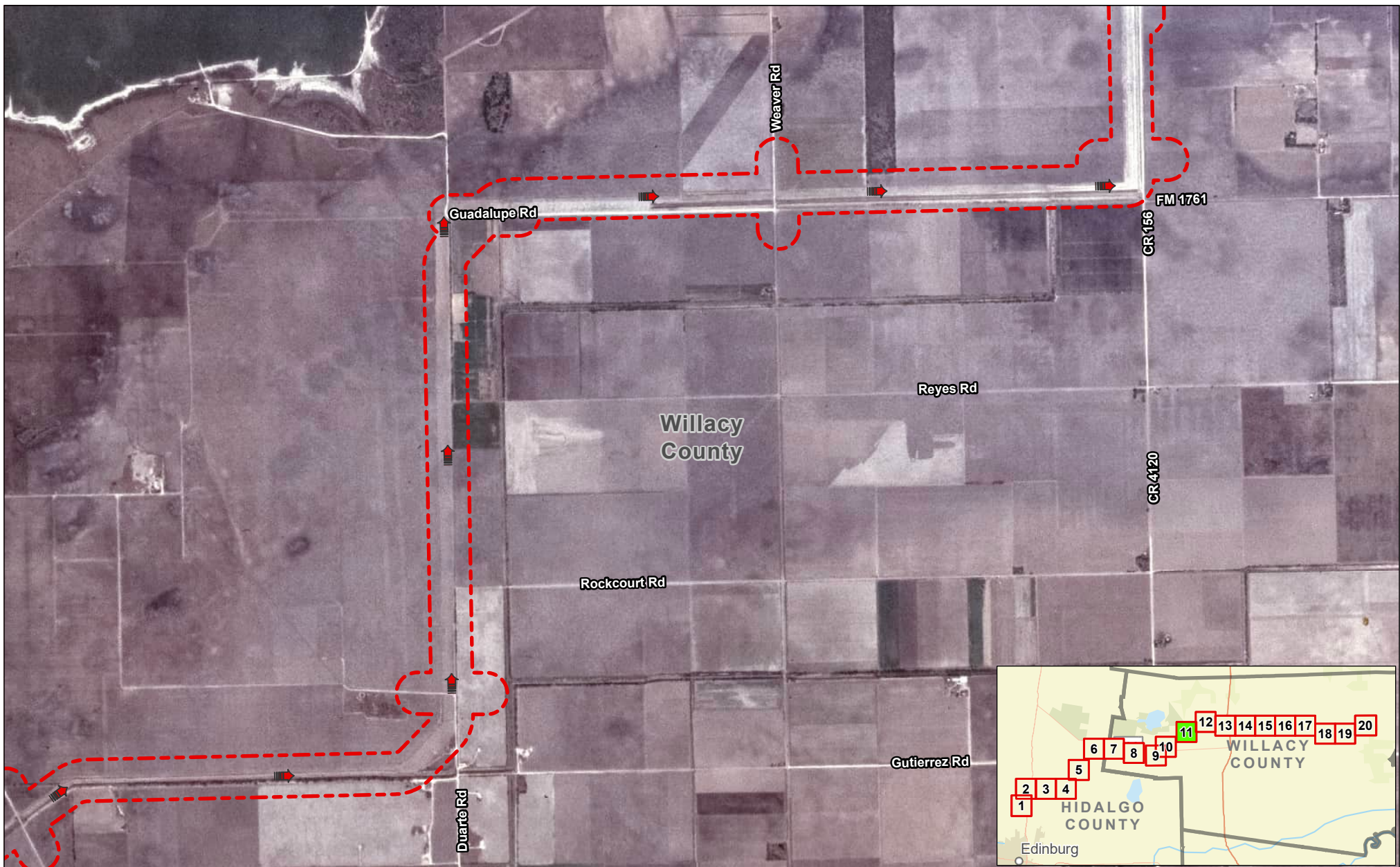


**Exhibit 4B
Alternative 1
Aerial Photograph (1972)
Sheet 10 of 20
Raymondville Drain Project**



Author : Joel F. Aguirre Updated : 10/5/2023

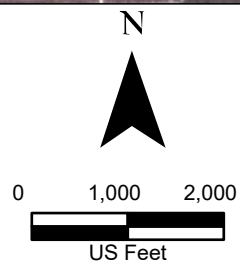
DISCLAIMER: RRP Consulting Engineers makes no guarantees as to the accuracy of data used in the construction of this map.

Path: D:\projects\40858\RRP_Project\Raymondville\GIS\RRP_Sheet10-End_Series.aprx



Legend:

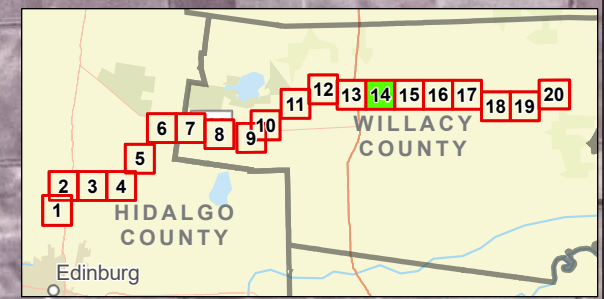
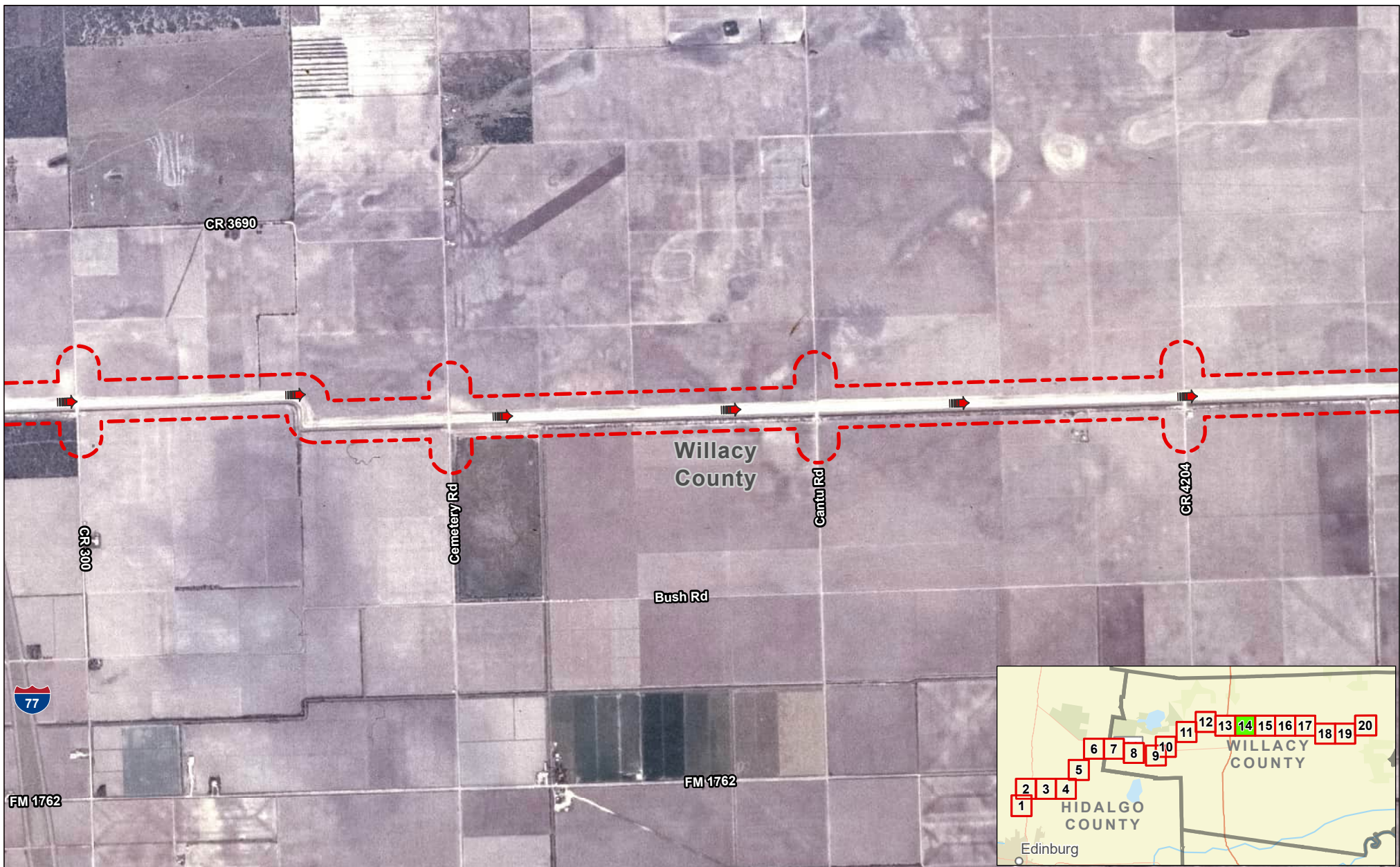
-  Drain Flow
-  Study Corridor



**Exhibit 4B
Alternative 1
Aerial Photograph (1972)
Sheet 11 of 20
Raymondville Drain Project**

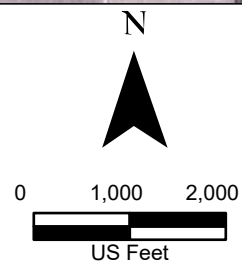
Author : Joel F. Aguirre Updated : 10/5/2023

DISCLAIMER: RRP Consulting Engineers makes no guarantees as to the accuracy of data used in the construction of this map.



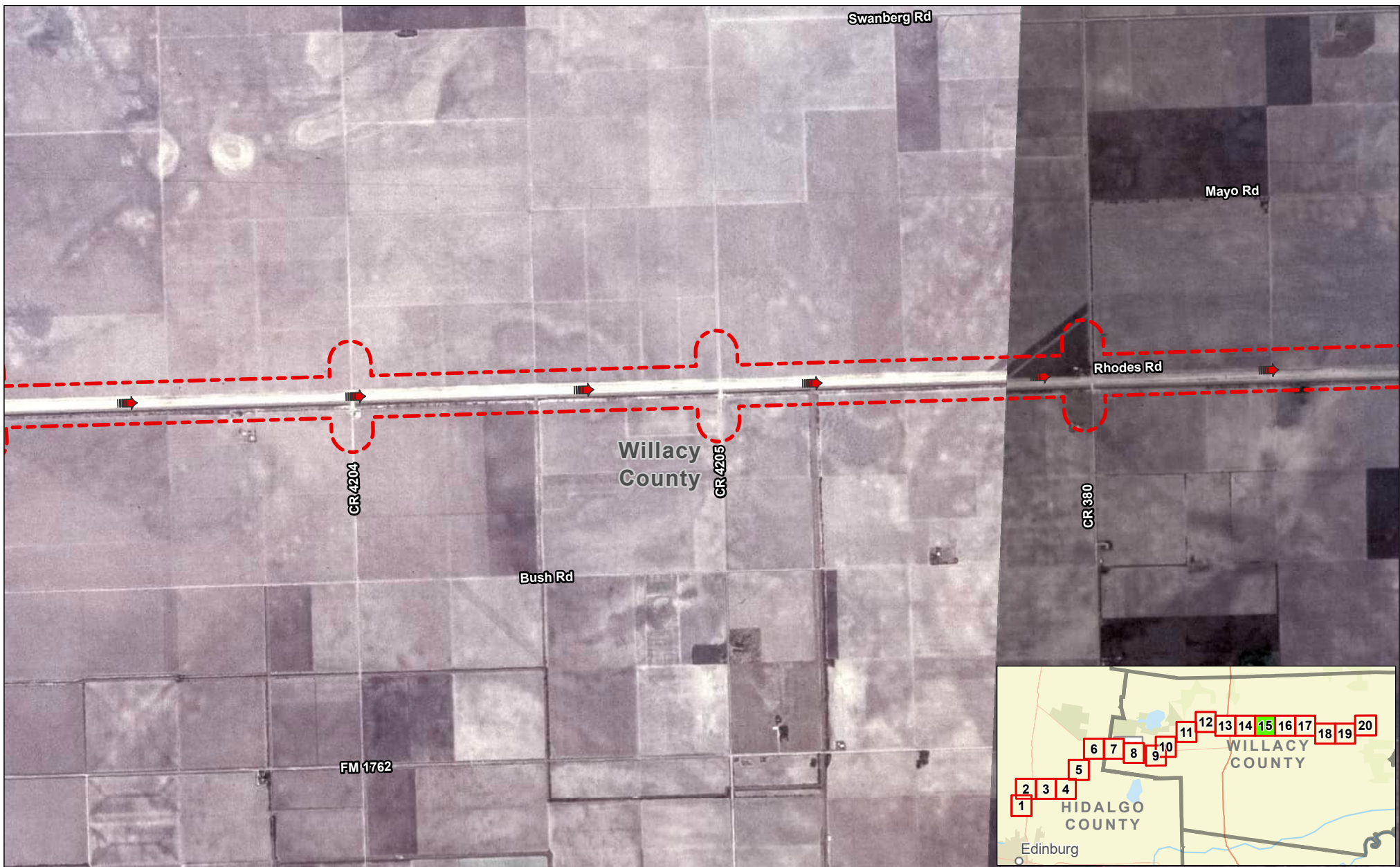
Legend:

- Drain Flow
- Study Corridor



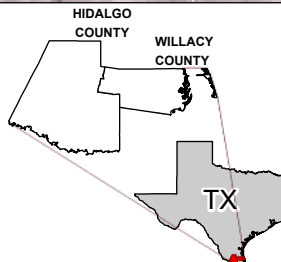
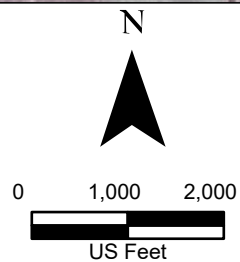
**Exhibit 4B
Alternative 1
Aerial Photograph (1972)
Sheet 14 of 20
Raymondville Drain Project**

Author : Joel F. Aguirre Updated : 10/5/2023
 DISCLAIMER: RRP Consulting Engineers makes no guarantees as to the accuracy of data used in the construction of this map.



Legend:

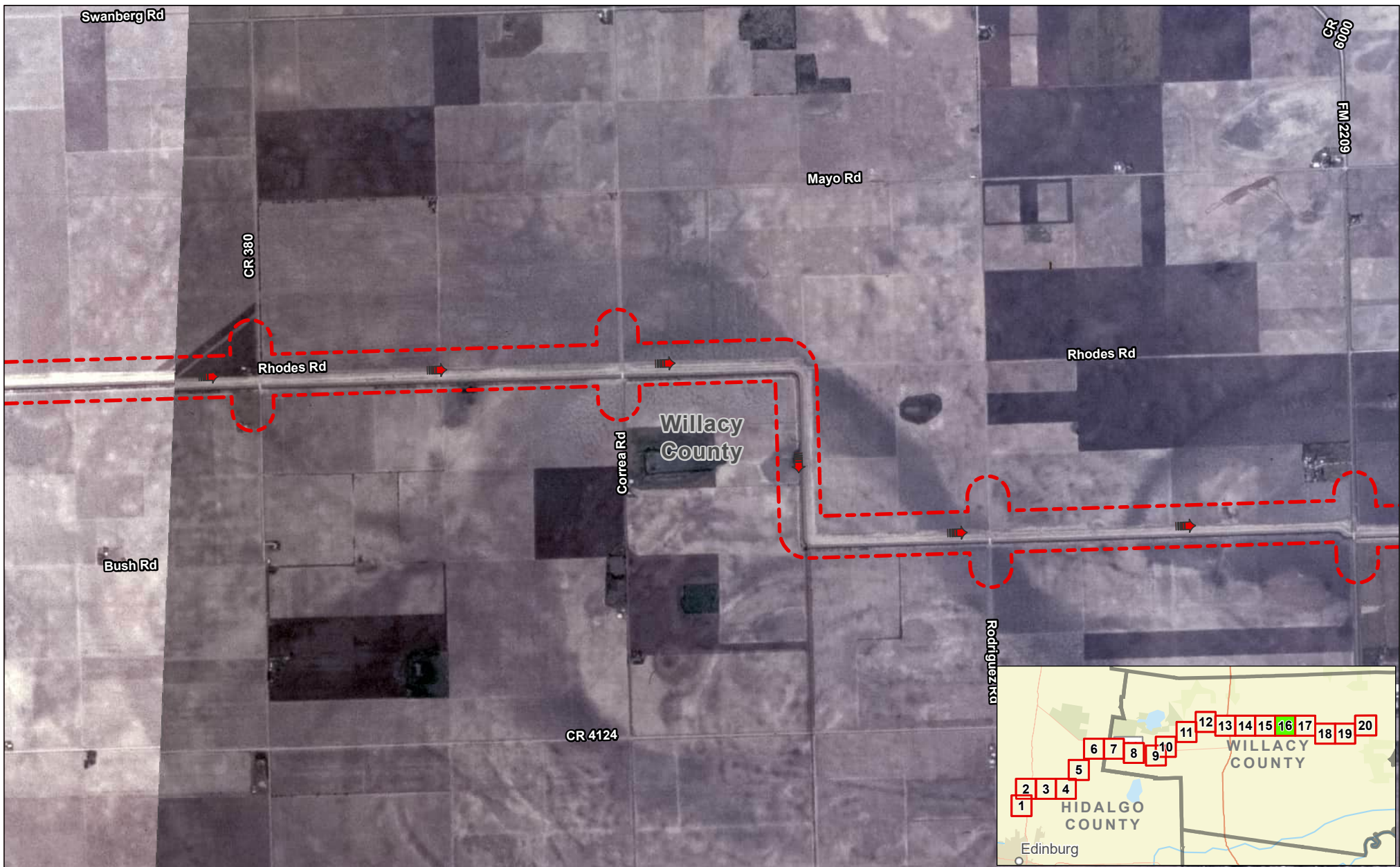
- Drain Flow
- Study Corridor






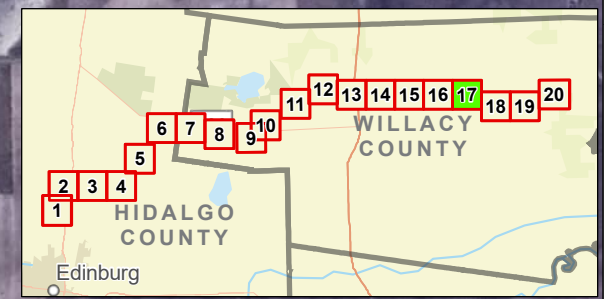
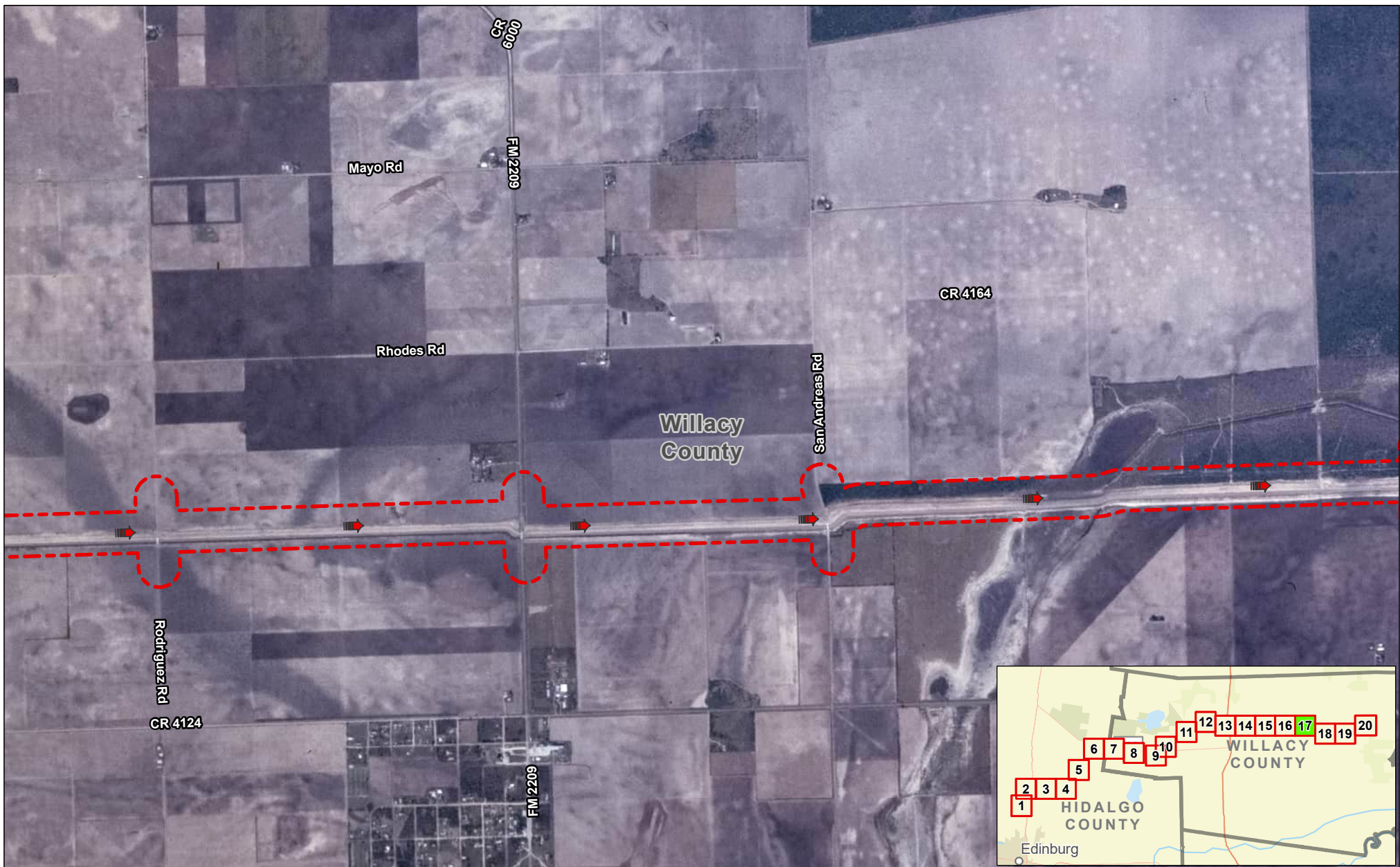
**Exhibit 4B
Alternative 1
Aerial Photograph (1972)
Sheet 15 of 20
Raymondville Drain Project**

Author : Joel F. Aguirre Updated : 10/5/2023



DISCLAIMER: RRP Consulting Engineers makes no guarantees as to the accuracy of data used in the construction of this map.

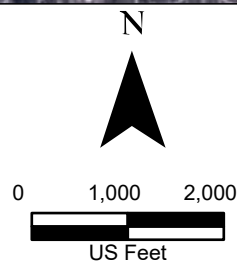


<p>Legend:</p> <p>  Drain Flow  Study Corridor </p> <p>Data Provenance: NAIP World Aerial Imagery (1972)</p>	<p>N</p> <p>0 1,000 2,000</p> <p>US Feet</p>	<p>HIDALGO COUNTY WILLACY COUNTY</p> <p>TX</p>	 	<p align="center"> Exhibit 4B Alternative 1 Aerial Photograph (1972) Sheet 16 of 20 Raymondville Drain Project </p> <table border="1"> <tr> <td>Author : Joel F. Aguirre</td> <td>Updated : 10/5/2023</td> </tr> </table> <p><small>DISCLAIMER: RRP Consulting Engineers makes no guarantees as to the accuracy of data used in the construction of this map.</small></p>	Author : Joel F. Aguirre	Updated : 10/5/2023
Author : Joel F. Aguirre	Updated : 10/5/2023					



Legend:

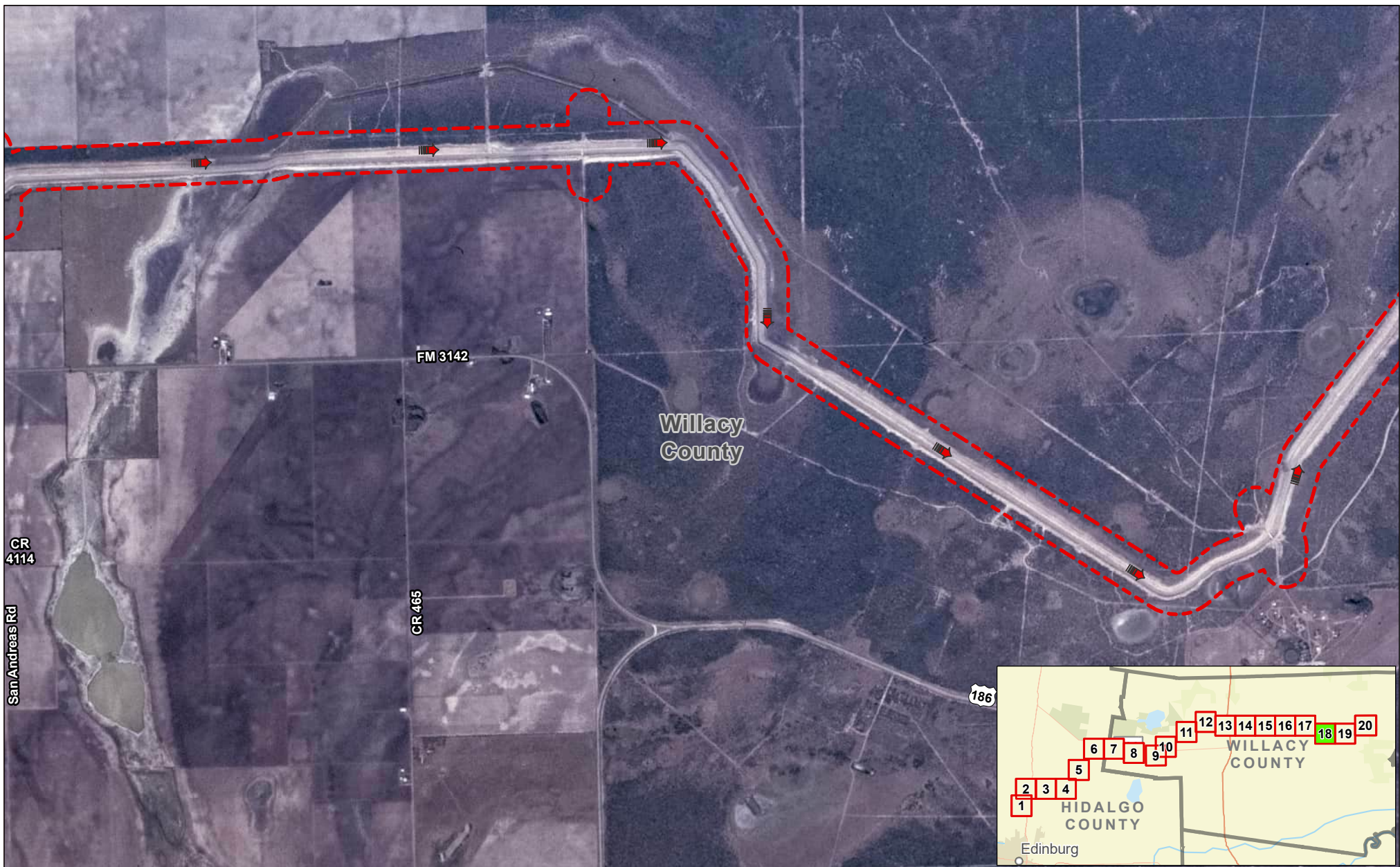
-  Drain Flow
-  Study Corridor





**Exhibit 4B
Alternative 1
Aerial Photograph (1972)
Sheet 17 of 20
Raymondville Drain Project**

Author : Joel F. Aguirre Updated : 10/5/2023

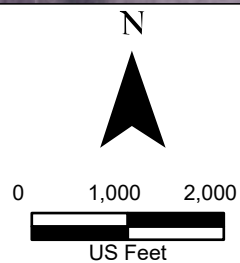
DISCLAIMER: RRP Consulting Engineers makes no guarantees as to the accuracy of data used in the construction of this map.



Legend:

-  Drain Flow
-  Study Corridor

Data Provenance: NAIP World Aerial Imagery (1972)

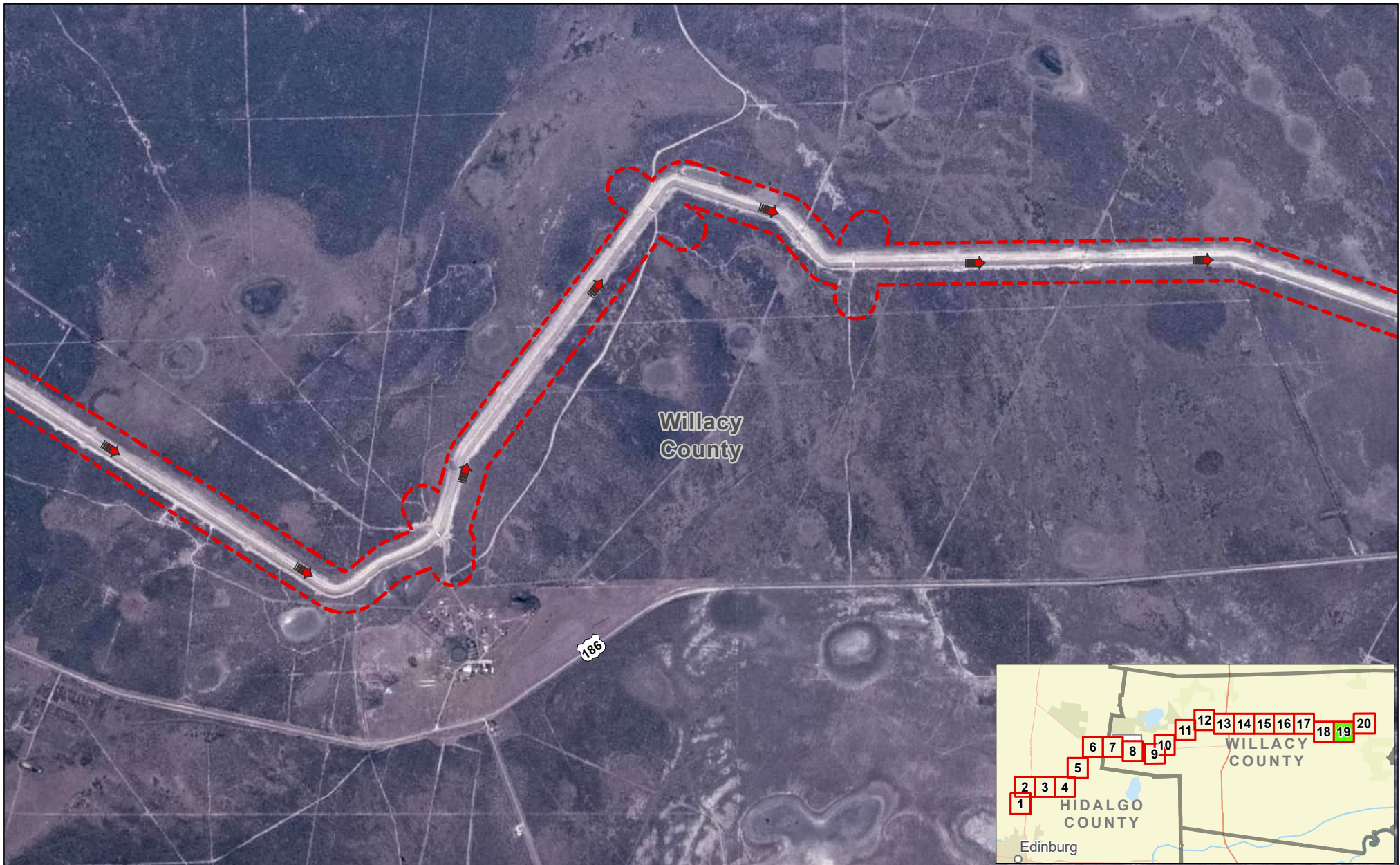


**Exhibit 4B
Alternative 1
Aerial Photograph (1972)
Sheet 18 of 20
Raymondville Drain Project**



Author : Joel F. Aguirre Updated : 10/5/2023

DISCLAIMER: RRP Consulting Engineers makes no guarantees as to the accuracy of data used in the construction of this map.

Path: D:\projects\40858\RAI_ProjectRepository\GIS\RAI_Sheet-to-Sheet_Series.aprx



Legend:

-  Drain Flow
-  Study Corridor

Data Provenance: NAIP World Aerial Imagery (1972)

N



0 1,000 2,000



US Feet



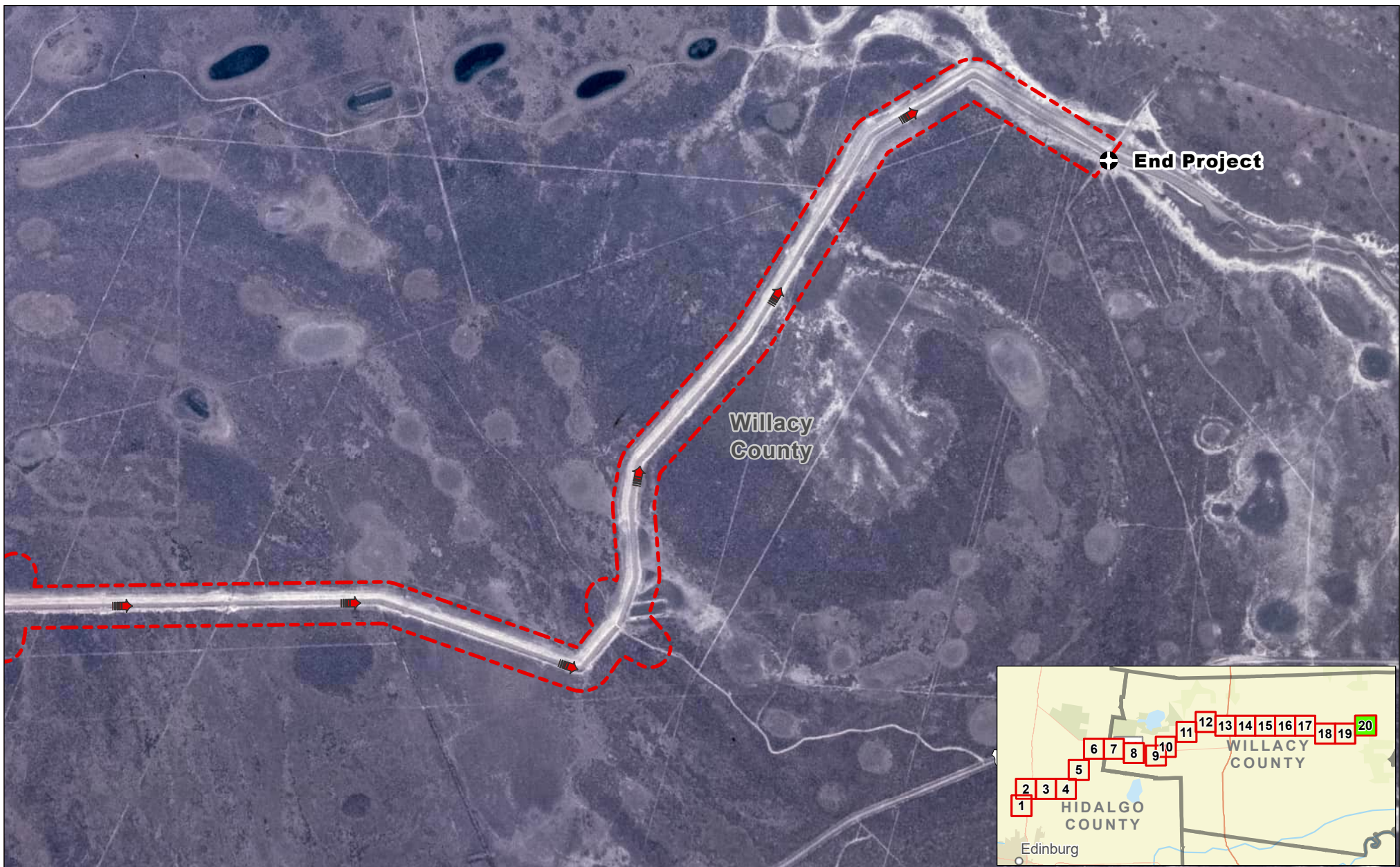
**Exhibit 4B
Alternative 1
Aerial Photograph (1972)
Sheet 19 of 20
Raymondville Drain Project**

Author : Joel F. Aguirre



Updated : 10/5/2023

DISCLAIMER: RRP Consulting Engineers makes no guarantees as to the accuracy of data used in the construction of this map.

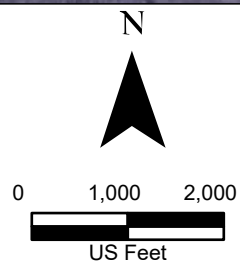
Path: D:\projects\40858\RRP_ProjectRepository\GIS\RRP_Drain-to-End_Series.aprx



Legend:

-  Drain Flow
-  Study Corridor

Data Provenance: NAIP World Aerial Imagery (1972)



**Exhibit 4B
Alternative 1
Aerial Photograph (1972)
Sheet 20 of 20
Raymondville Drain Project**

Author : Joel F. Aguirre Updated : 10/5/2023

DISCLAIMER: RRP Consulting Engineers makes no guarantees as to the accuracy of data used in the construction of this map.

Path: S:\projects\HIDALGO\Raymondville\GIS\Map_Series.aprx