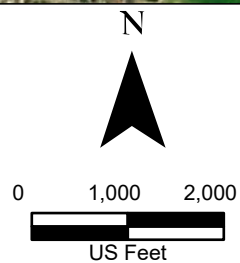




**Legend:**

- Drain Flow
- Study Corridor

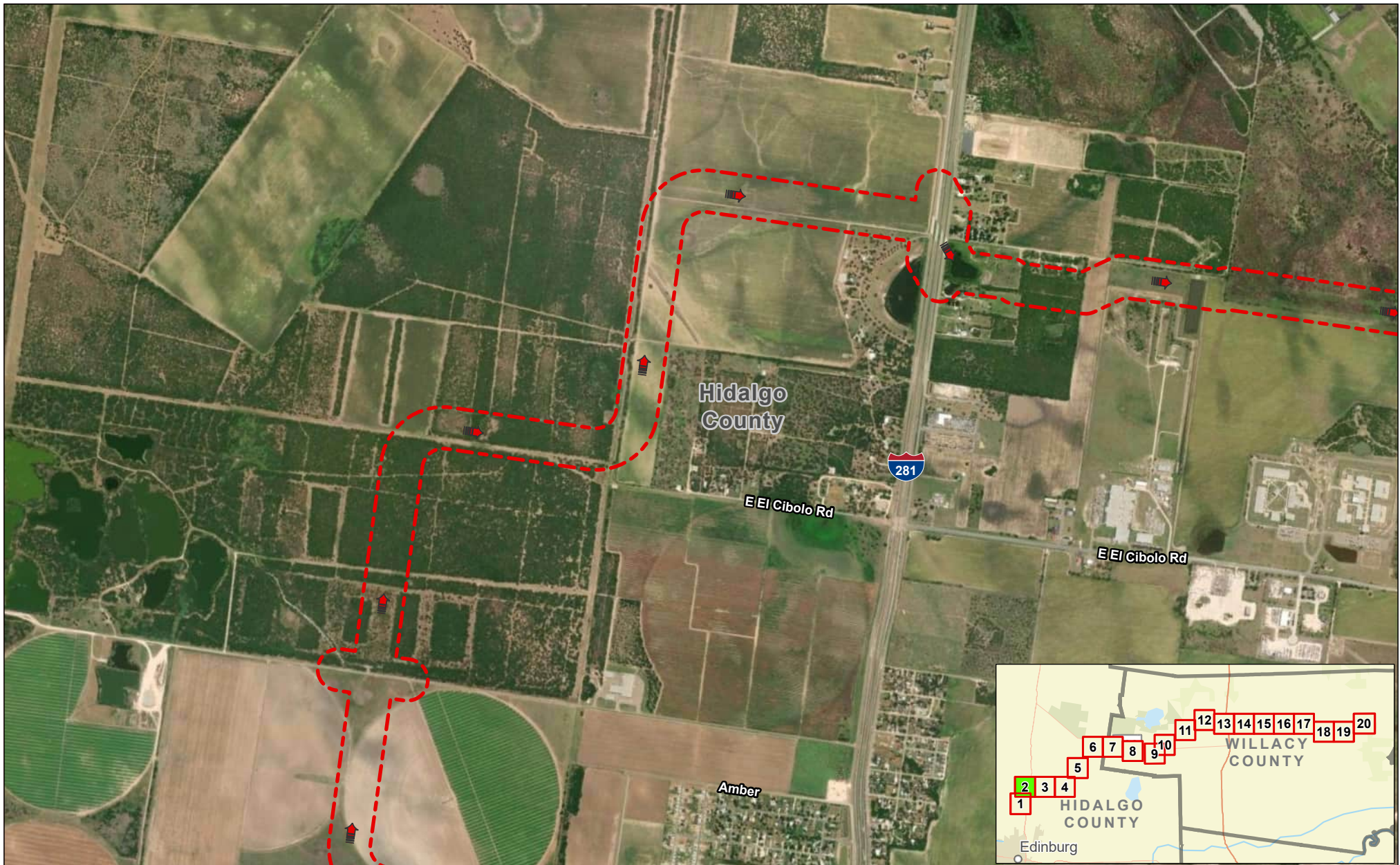


**Exhibit 4F  
Alternative 1  
Aerial Photograph (2022)  
Sheet 1 of 20  
Raymondville Drain Project**



Author : Joel F. Aguirre      Updated : 10/5/2023

DISCLAIMER: RRP Consulting Engineers makes no guarantees as to the accuracy of data used in the construction of this map.

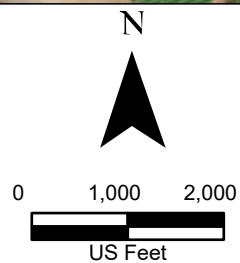




#### Legend:

-  Drain Flow
-  Study Corridor

Data Provenance: NAIP World Aerial Imagery (2022)



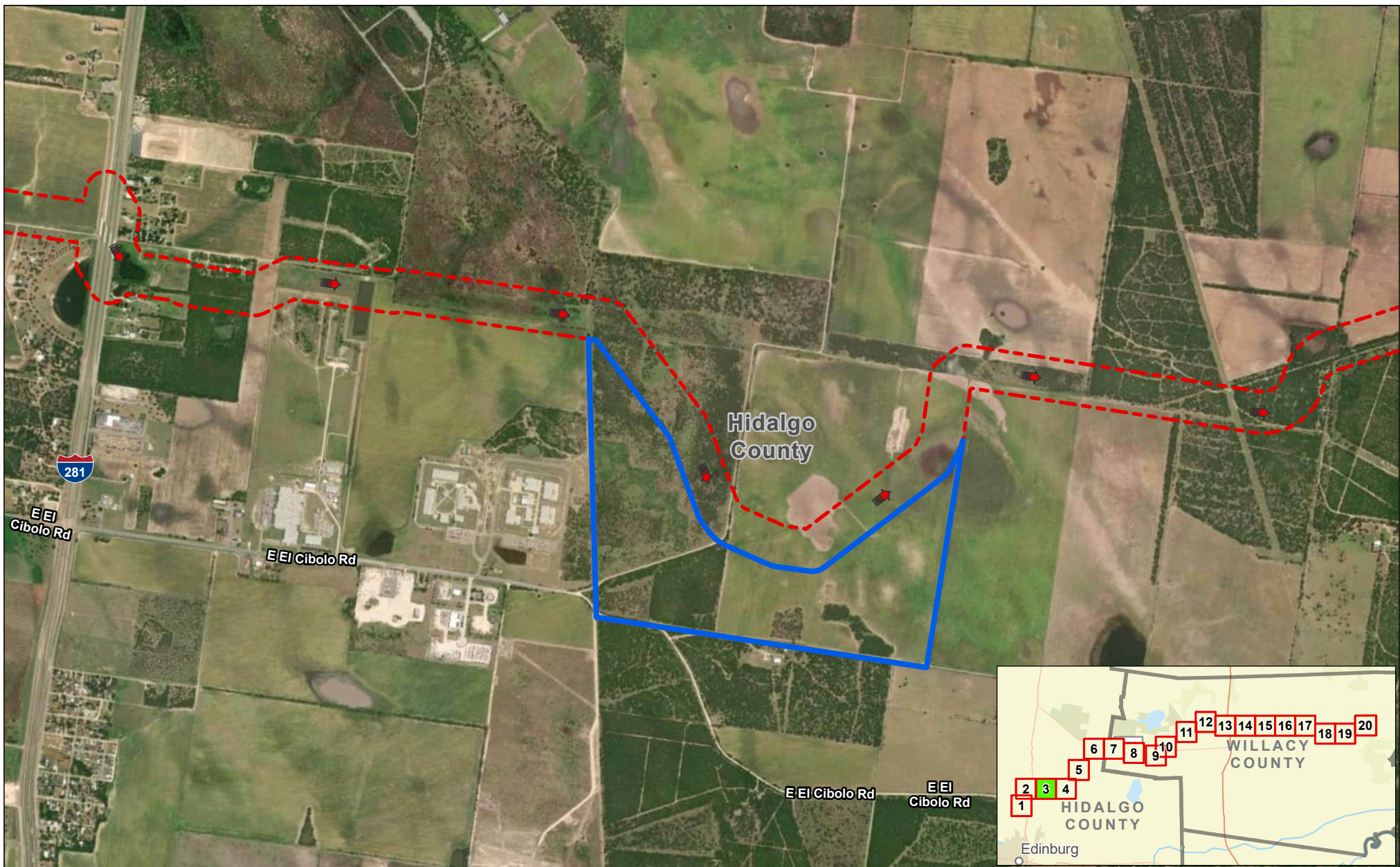
## Exhibit 4F Alternative 1 Aerial Photograph (2022) Sheet 2 of 20 Raymondville Drain Project

Author : Joel F. Aguirre Updated : 10/5/2023




DISCLAIMER: RRP Consulting Engineers makes no guarantees as to the accuracy of data used in the construction of this map.

Path: D:\projects\4408\0401\ProjectRepository\GIS\RDSP\_2022\to-End\_Series.aprx





**Legend:**

-  Drain Flow
-  Study Corridor
-  Proposed Detention Basin

Data Provenance: NAIP World Aerial Imagery (2022)

N



0 1,000 2,000



US Feet



**Exhibit 4F  
Alternative 1  
Aerial Photograph (2022)  
Sheet 3 of 20  
Raymondville Drain Project**

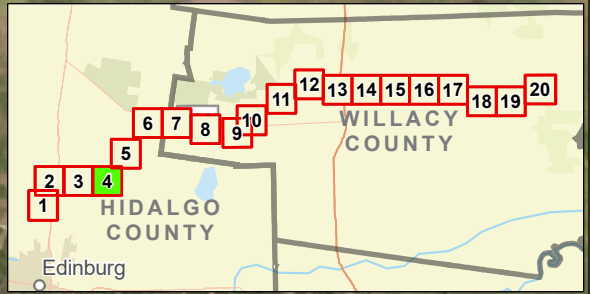
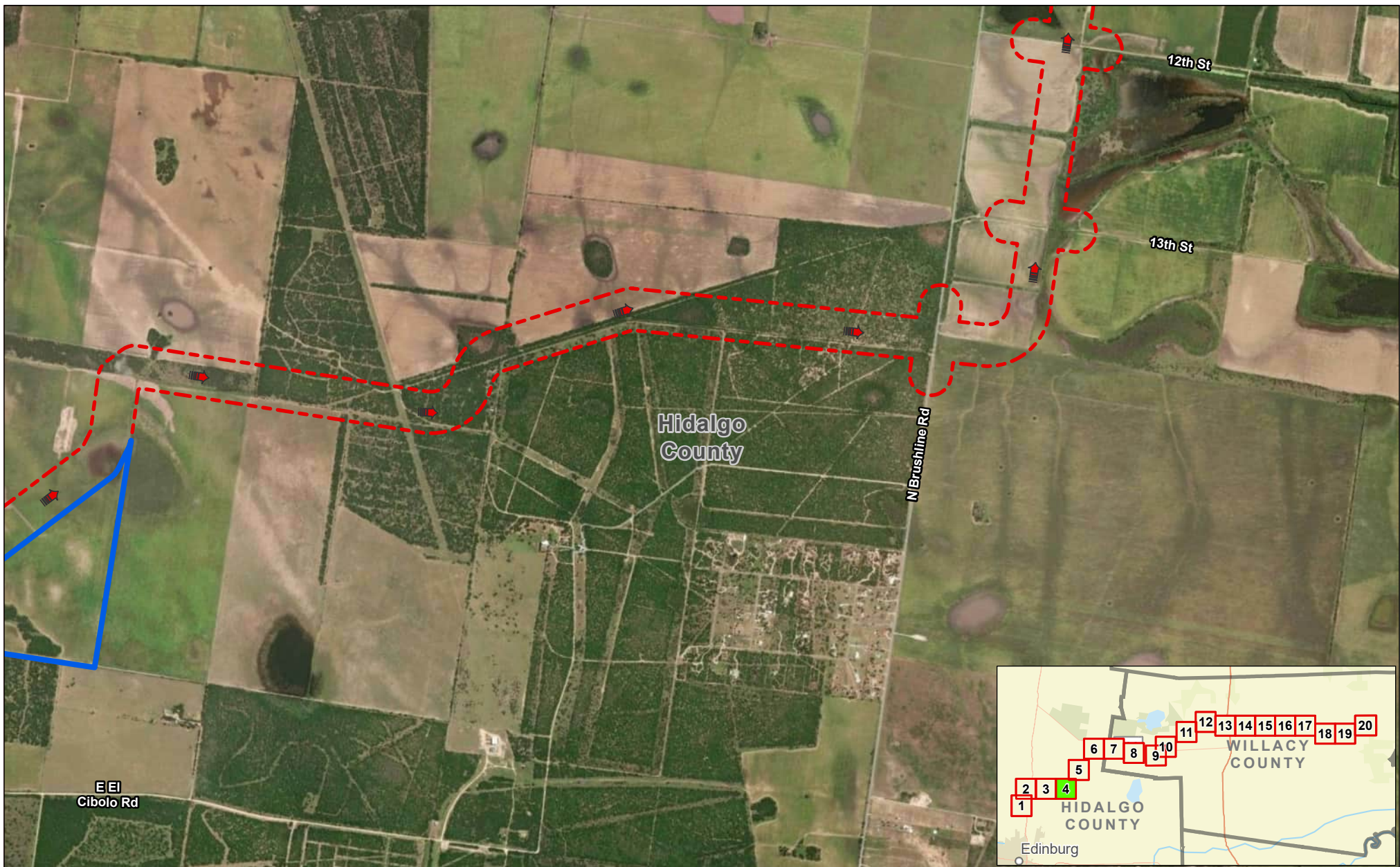
Author : Joel F. Aguirre

Updated : 10/5/2023




DISCLAIMER: RRP Consulting Engineers makes no guarantees as to the accuracy of data used in the construction of this map.

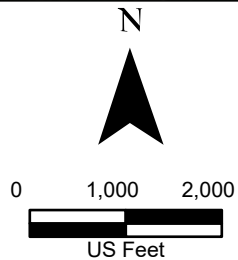
Path: D:\projects\4408\RAI\_ProjectRepository\GIS\RAI\_Drain-to-Edinb\_Series.aprx





**Legend:**

-  Drain Flow
-  Study Corridor
-  Proposed Detention Basin



**Exhibit 4F  
Alternative 1  
Aerial Photograph (2022)  
Sheet 4 of 20  
Raymondville Drain Project**



Author : Joel F. Aguirre Updated : 10/5/2023

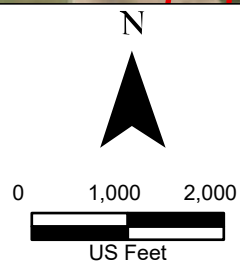
DISCLAIMER: RRP Consulting Engineers makes no guarantees as to the accuracy of data used in the construction of this map.





**Legend:**

-  Drain Flow
-  Study Corridor

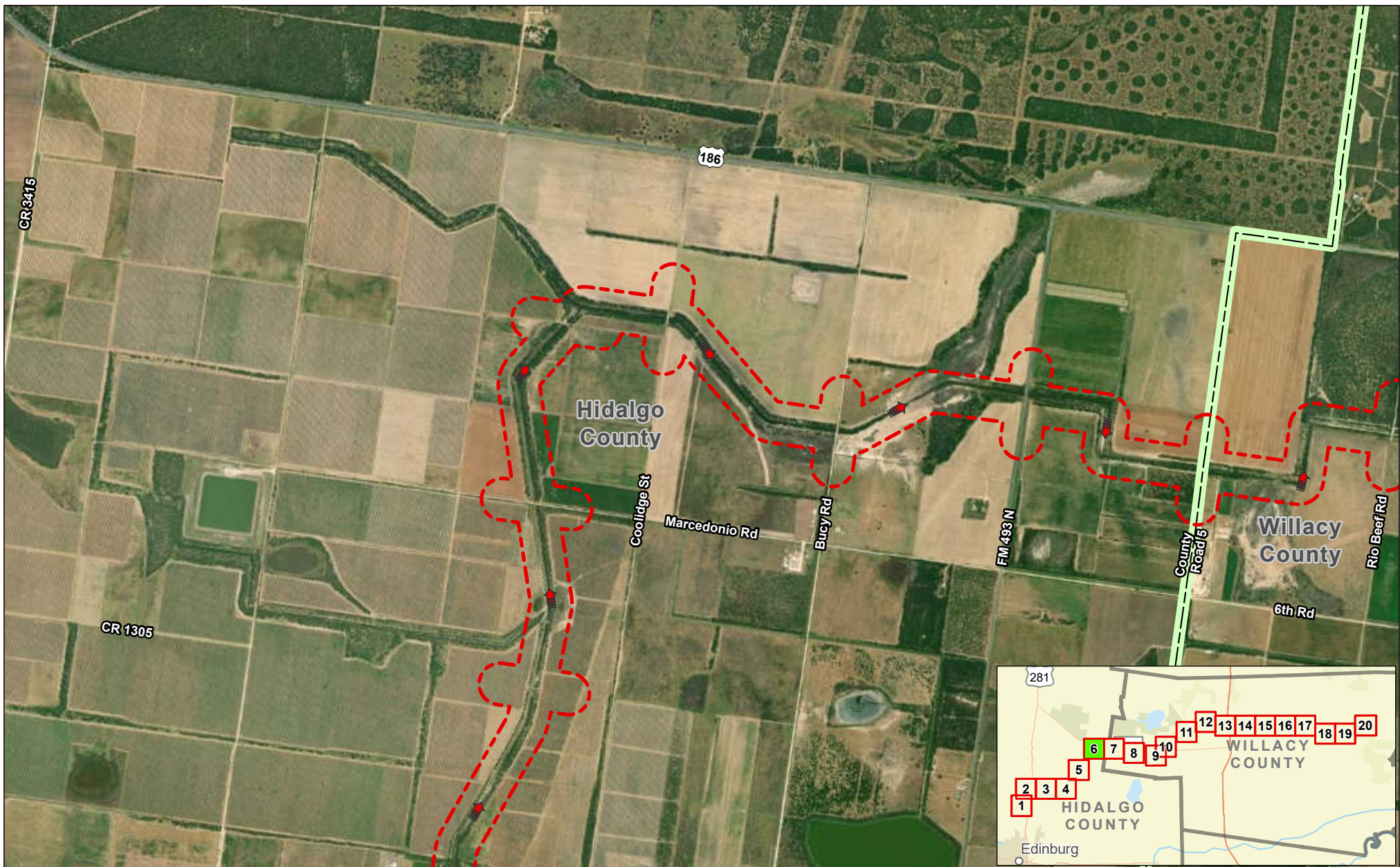


**Exhibit 4F  
Alternative 1  
Aerial Photograph (2022)  
Sheet 5 of 20  
Raymondville Drain Project**



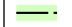
Author : Joel F. Aguirre Updated : 10/5/2023

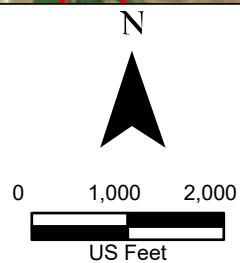
DISCLAIMER: RRP Consulting Engineers makes no guarantees as to the accuracy of data used in the construction of this map.





**Legend:**

-  Drain Flow
-  Study Corridor
-  County Boundary

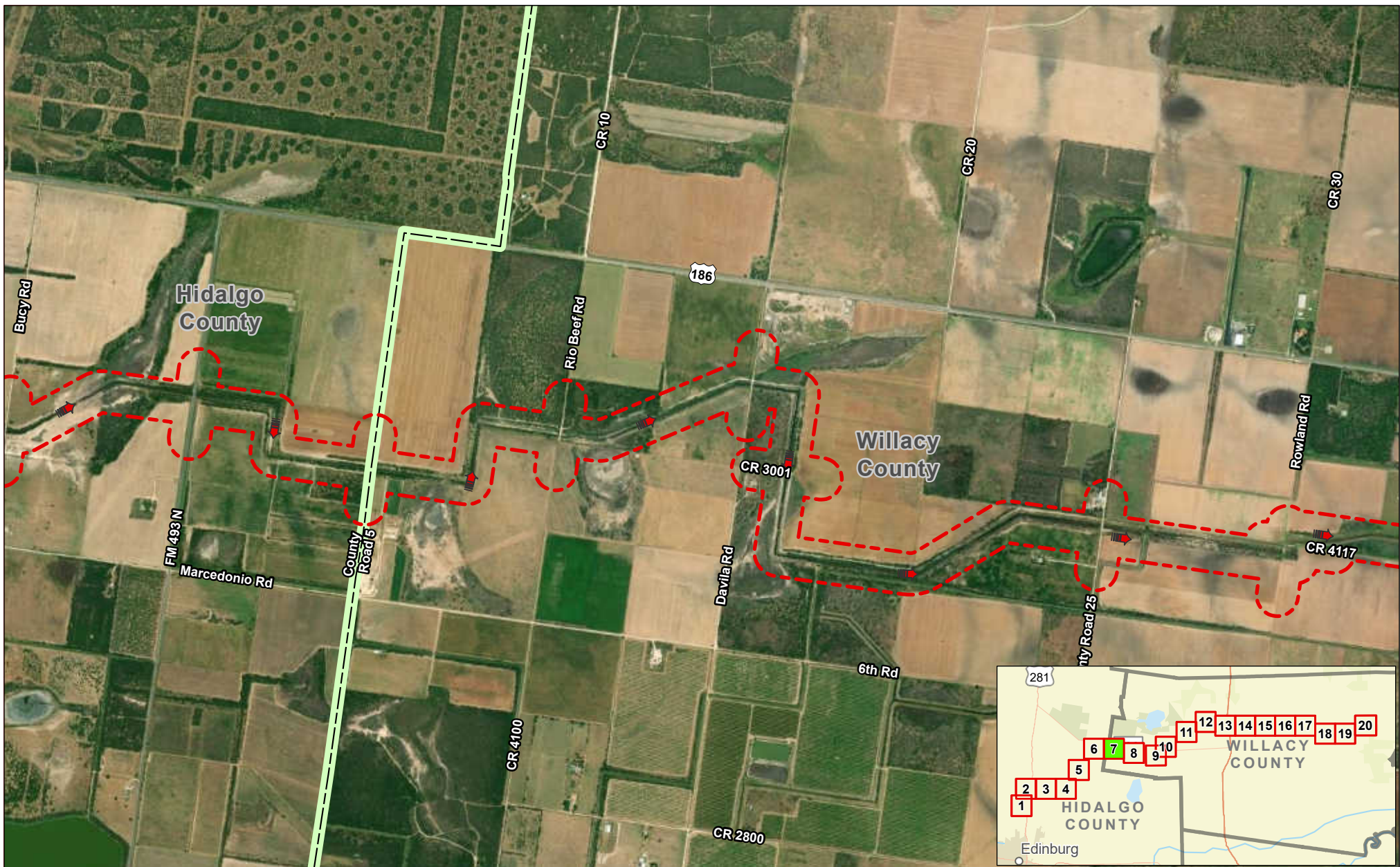


**Exhibit 4F  
Alternative 1  
Aerial Photograph (2022)  
Sheet 6 of 20  
Raymondville Drain Project**

Author : Joel F. Aguirre Updated : 12/12/2023

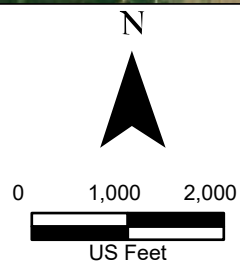
DISCLAIMER: RRP Consulting Engineers makes no guarantees as to the accuracy of data used in the construction of this map.





#### Legend:

- Drain Flow
- Study Corridor
- County Boundary



## Exhibit 4F Alternative 1 Aerial Photograph (2022) Sheet 7 of 20 Raymondville Drain Project



Author : Joel F. Aguirre Updated : 12/12/2023

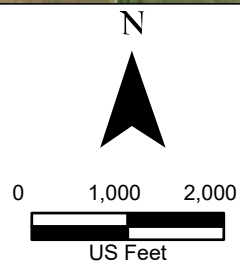
DISCLAIMER: RRP Consulting Engineers makes no guarantees as to the accuracy of data used in the construction of this map.





**Legend:**

-  Drain Flow
-  Study Corridor

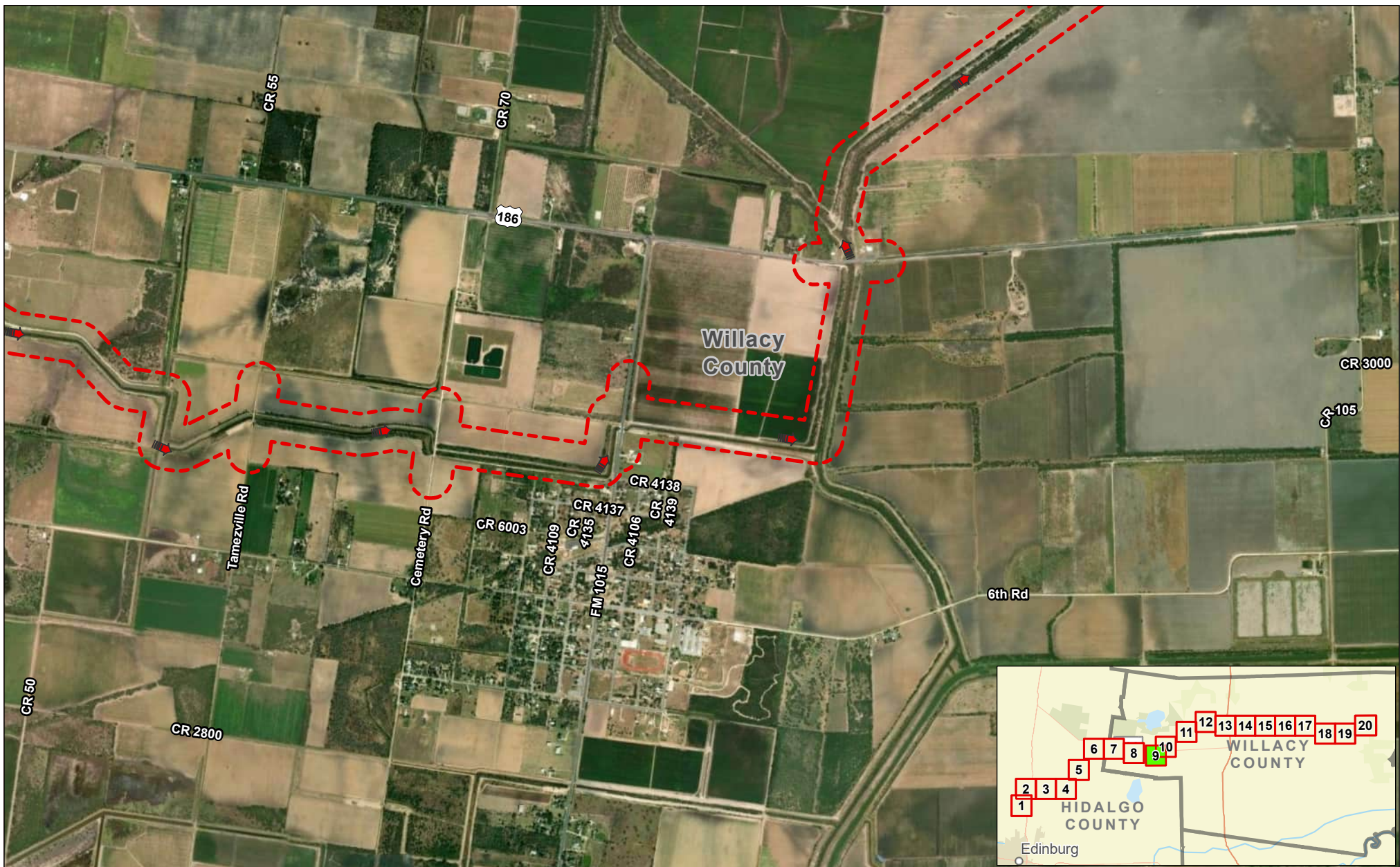


**Exhibit 4F  
Alternative 1  
Aerial Photograph (2022)  
Sheet 8 of 20  
Raymondville Drain Project**



Author : Joel F. Aguirre Updated : 10/5/2023

DISCLAIMER: RRP Consulting Engineers makes no guarantees as to the accuracy of data used in the construction of this map.

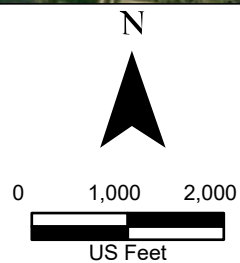




#### Legend:

-  Drain Flow
-  Study Corridor

Data Provenance: NAIP World Aerial Imagery (2022)



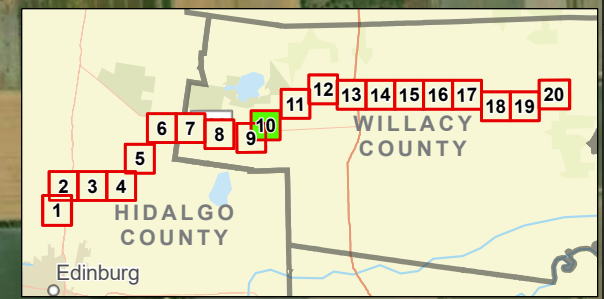
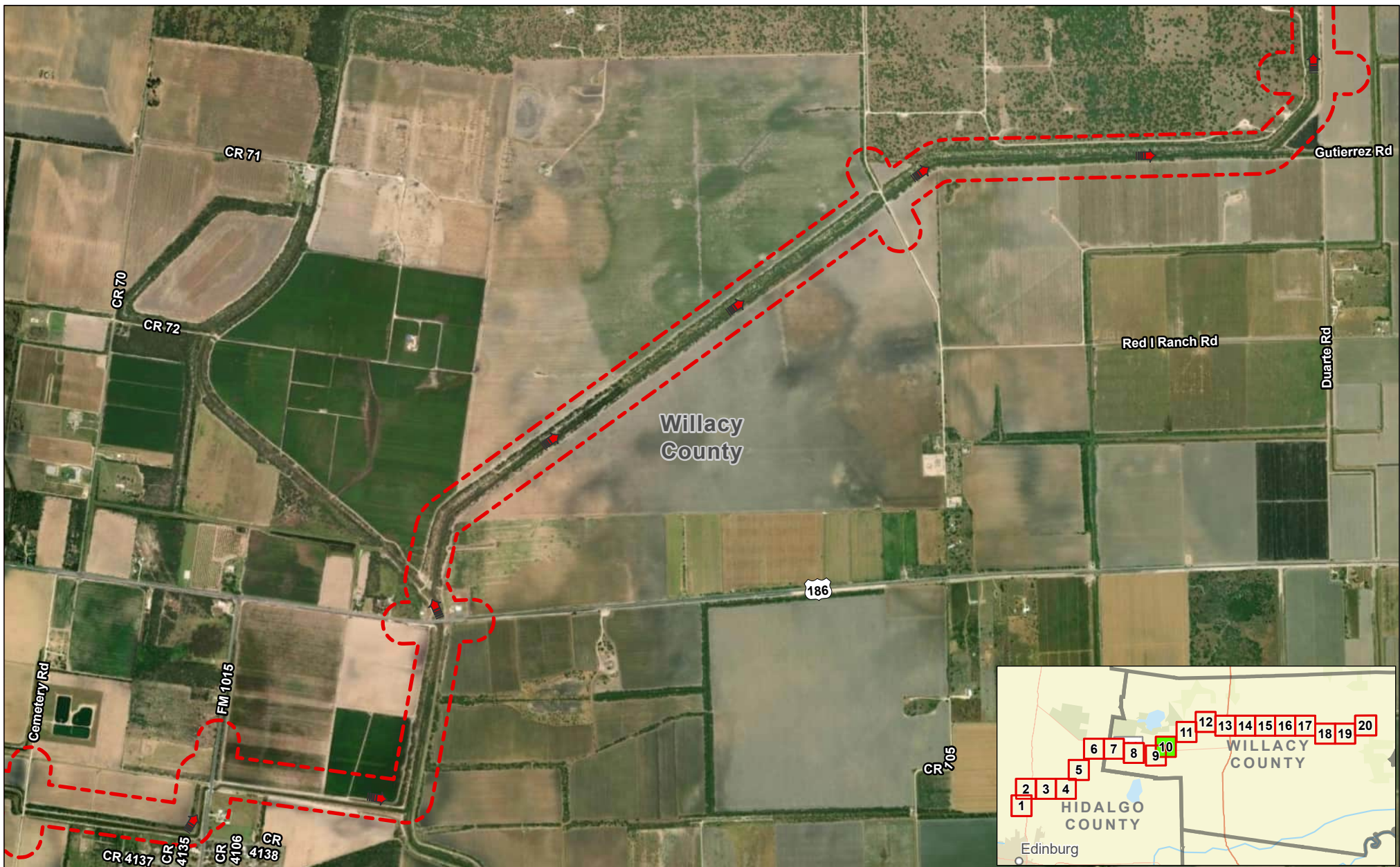
## Exhibit 4F Alternative 1 Aerial Photograph (2022) Sheet 9 of 20 Raymondville Drain Project

Author : Joel F. Aguirre Updated : 10/5/2023



DISCLAIMER: RRP Consulting Engineers makes no guarantees as to the accuracy of data used in the construction of this map.

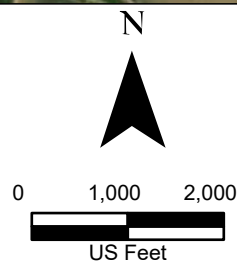
Path: D:\projects\44088\RA1\_Project\Raymondville\GIS\RA1\_Sheet-09-End\_Series.aprx





**Legend:**

-  Drain Flow
-  Study Corridor

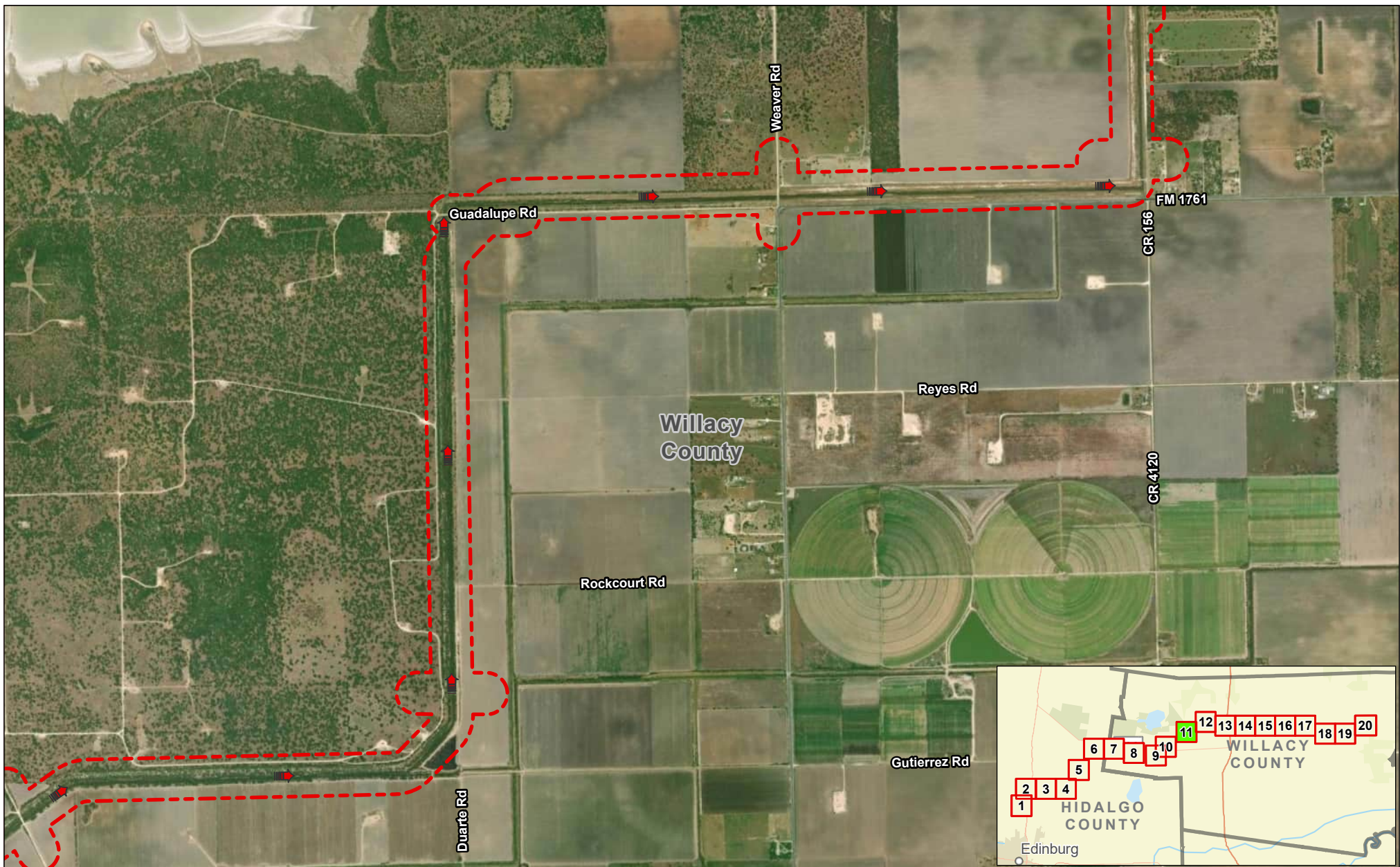


**Exhibit 4F  
Alternative 1  
Aerial Photograph (2022)  
Sheet 10 of 20  
Raymondville Drain Project**



Author : Joel F. Aguirre Updated : 10/5/2023

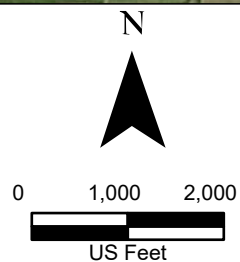
DISCLAIMER: RRP Consulting Engineers makes no guarantees as to the accuracy of data used in the construction of this map.





**Legend:**

-  Drain Flow
-  Study Corridor

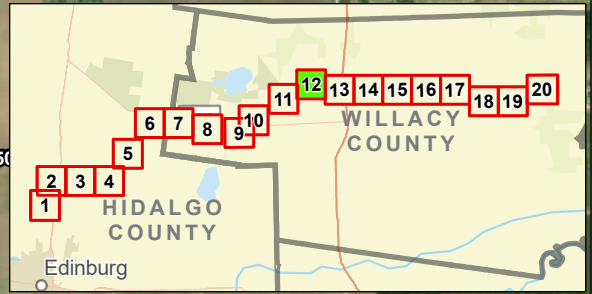
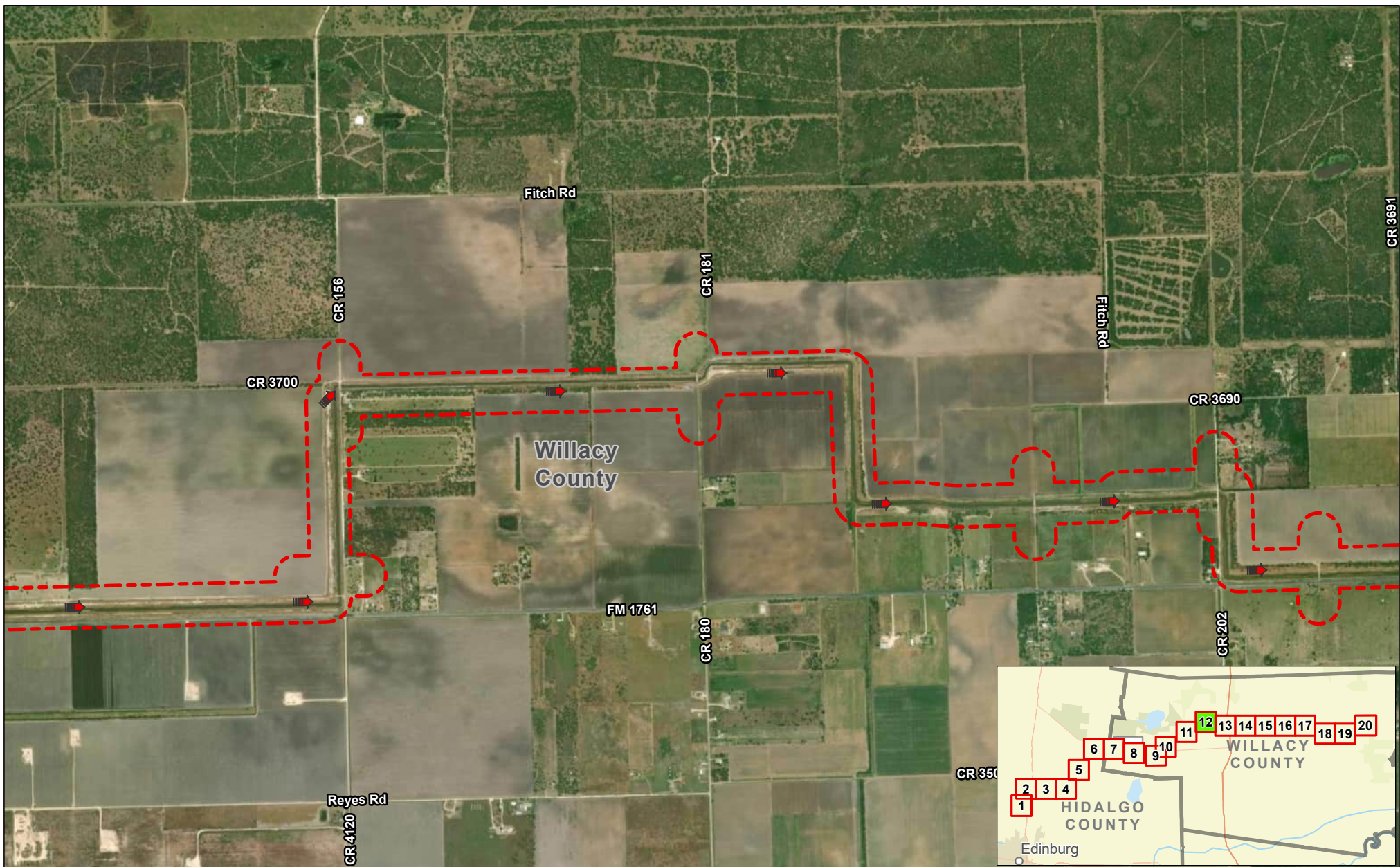


**Exhibit 4F  
Alternative 1  
Aerial Photograph (2022)  
Sheet 11 of 20  
Raymondville Drain Project**



Author : Joel F. Aguirre Updated : 10/5/2023

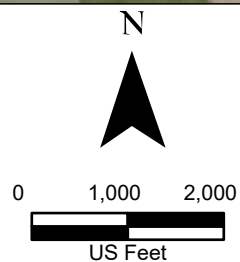
DISCLAIMER: RRP Consulting Engineers makes no guarantees as to the accuracy of data used in the construction of this map.





**Legend:**

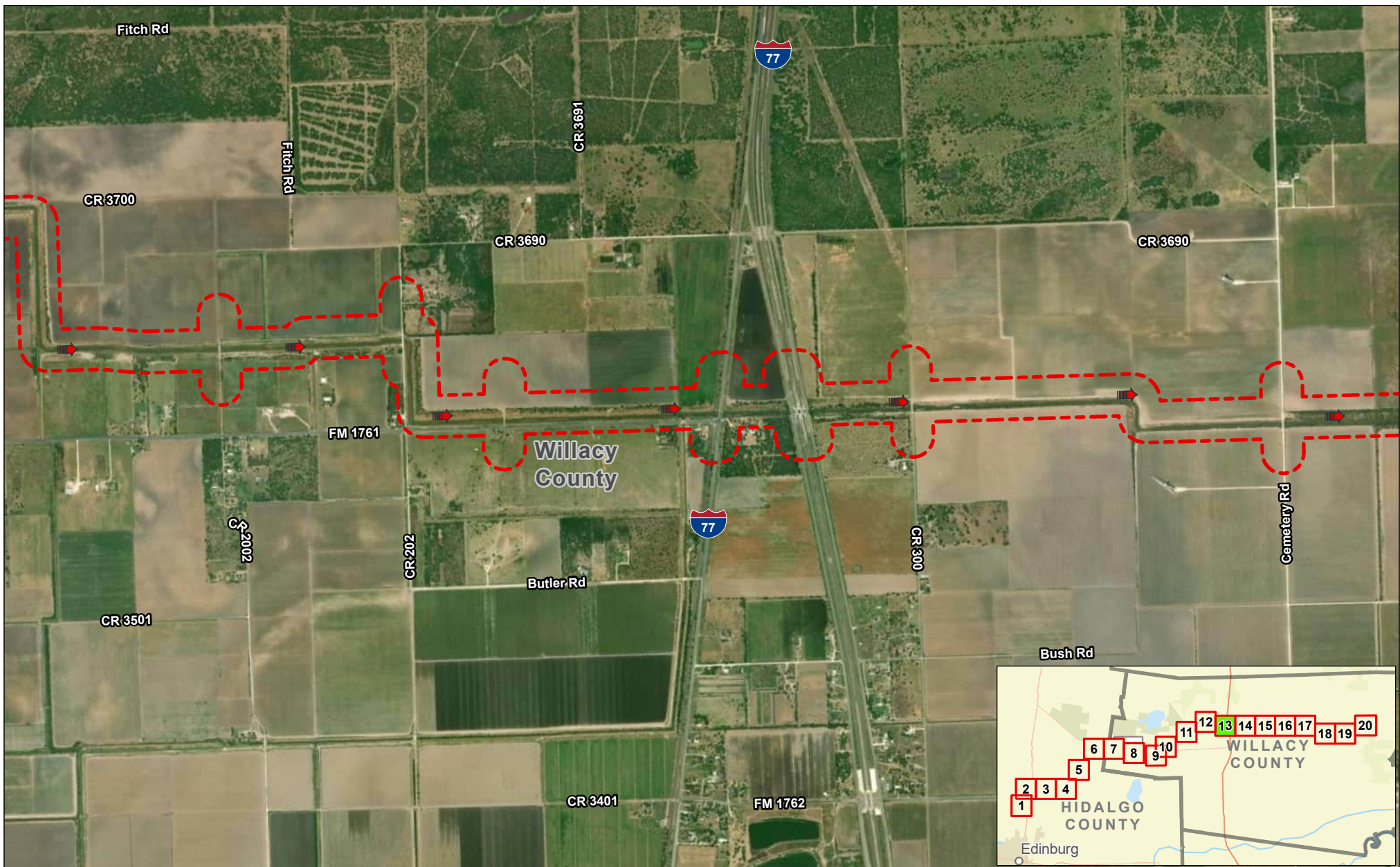
-  Drain Flow
-  Study Corridor





**Exhibit 4F  
Alternative 1  
Aerial Photograph (2022)  
Sheet 12 of 20  
Raymondville Drain Project**

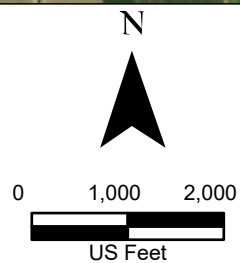
Author : Joel F. Aguirre      Updated : 10/5/2023  
 DISCLAIMER: RRP Consulting Engineers makes no guarantees as to the accuracy of data used in the construction of this map.





**Legend:**

-  Drain Flow
-  Study Corridor

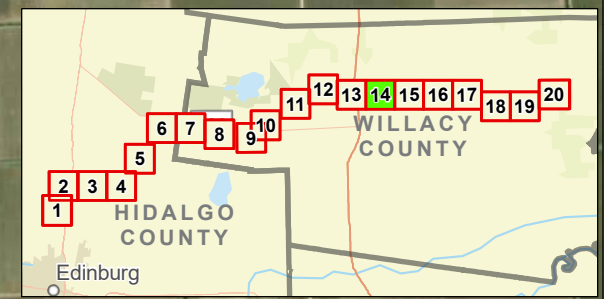


**Exhibit 4F  
Alternative 1  
Aerial Photograph (2022)  
Sheet 13 of 20  
Raymondville Drain Project**



Author : Joel F. Aguirre Updated : 10/5/2023

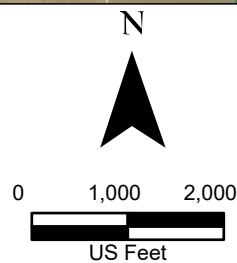
DISCLAIMER: RRP Consulting Engineers makes no guarantees as to the accuracy of data used in the construction of this map.





**Legend:**

-  Drain Flow
-  Study Corridor

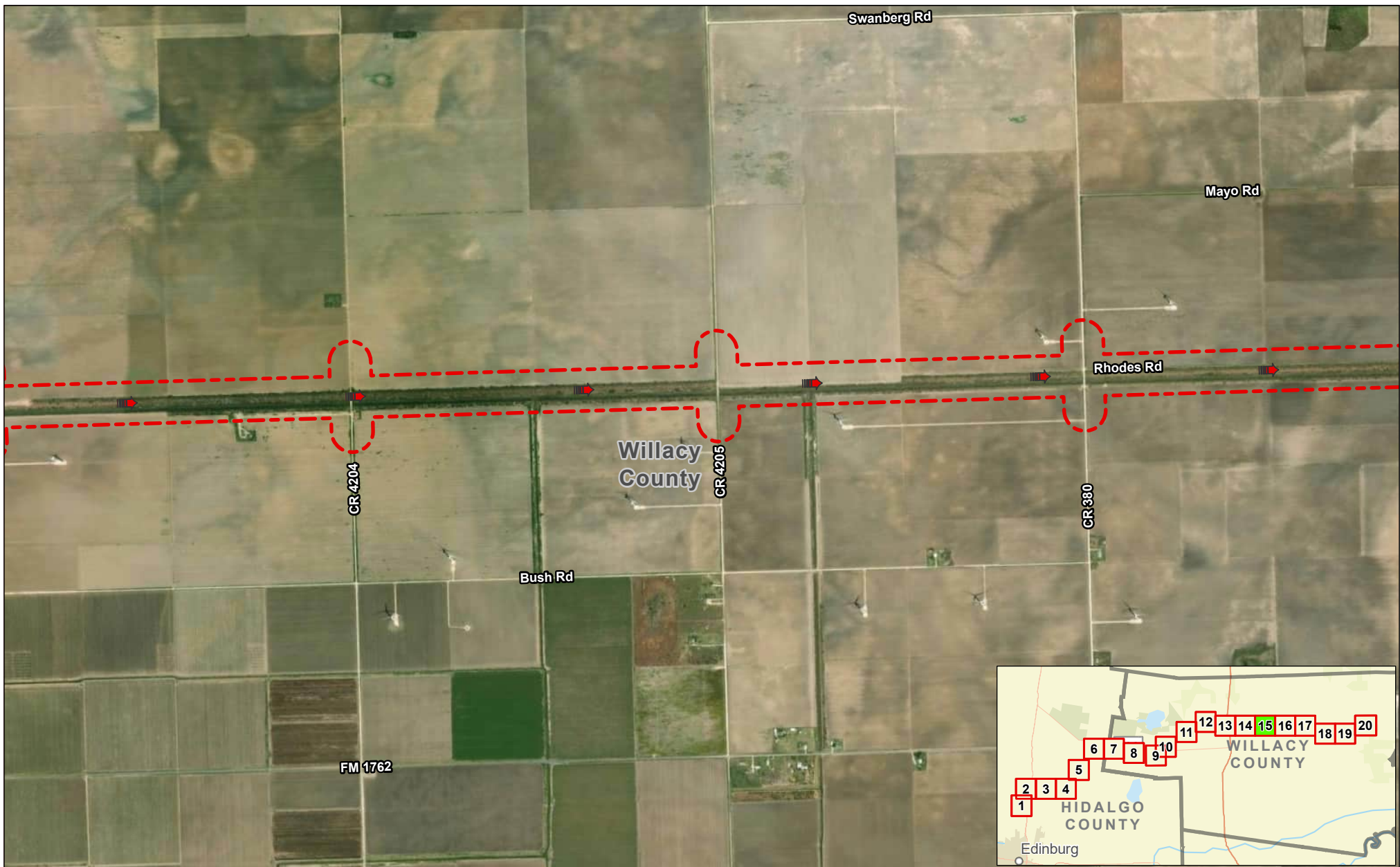


**Exhibit 4F  
Alternative 1  
Aerial Photograph (2022)  
Sheet 14 of 20  
Raymondville Drain Project**



Author : Joel F. Aguirre Updated : 10/5/2023

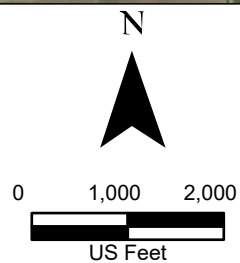
DISCLAIMER: RRP Consulting Engineers makes no guarantees as to the accuracy of data used in the construction of this map.





**Legend:**

-  Drain Flow
-  Study Corridor

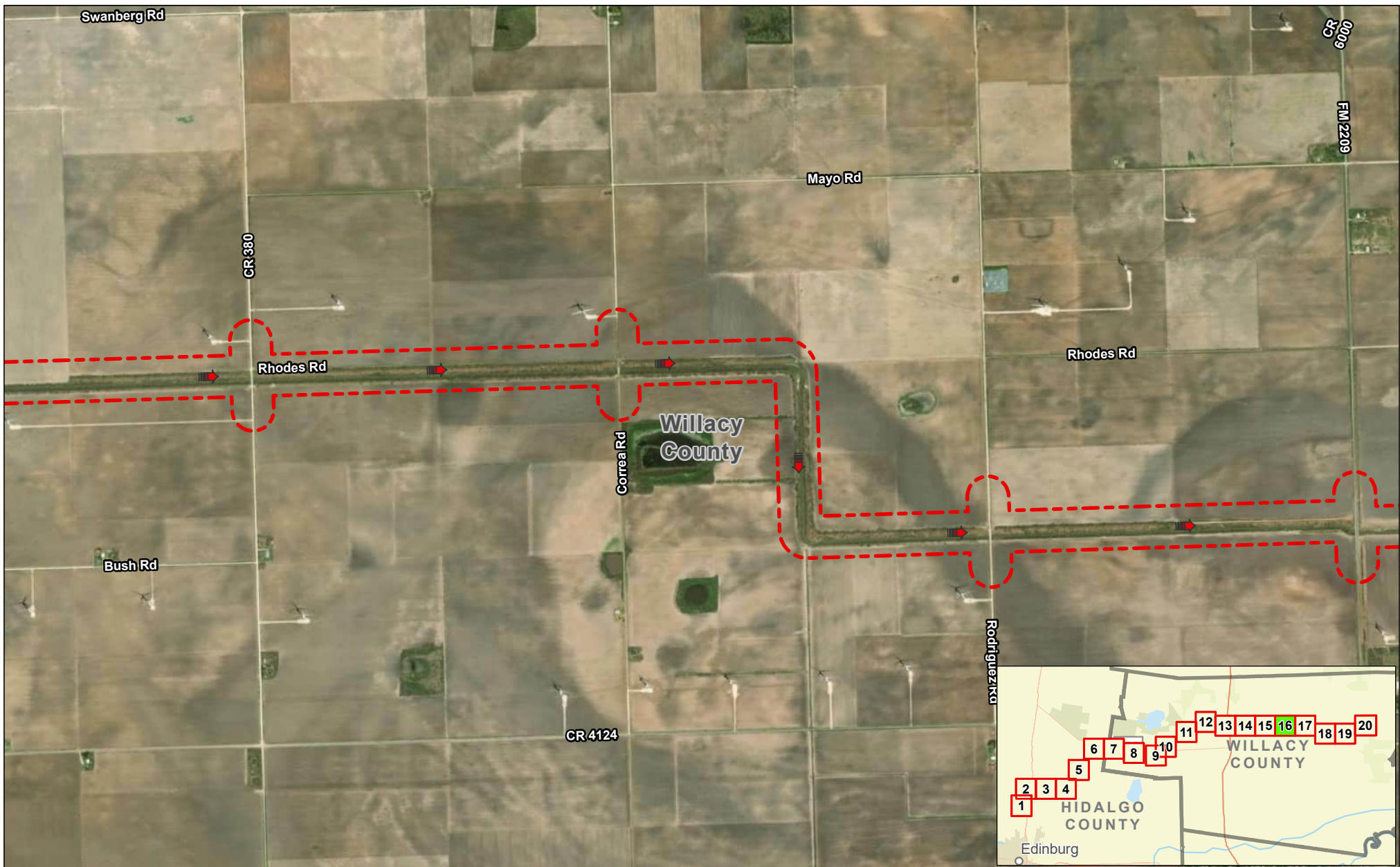


**Exhibit 4F  
Alternative 1  
Aerial Photograph (2022)  
Sheet 15 of 20  
Raymondville Drain Project**



Author : Joel F. Aguirre Updated : 10/5/2023

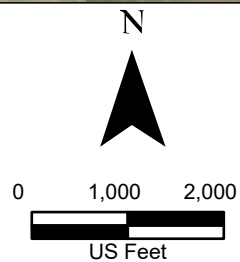
DISCLAIMER: RRP Consulting Engineers makes no guarantees as to the accuracy of data used in the construction of this map.





**Legend:**

-  Drain Flow
-  Study Corridor

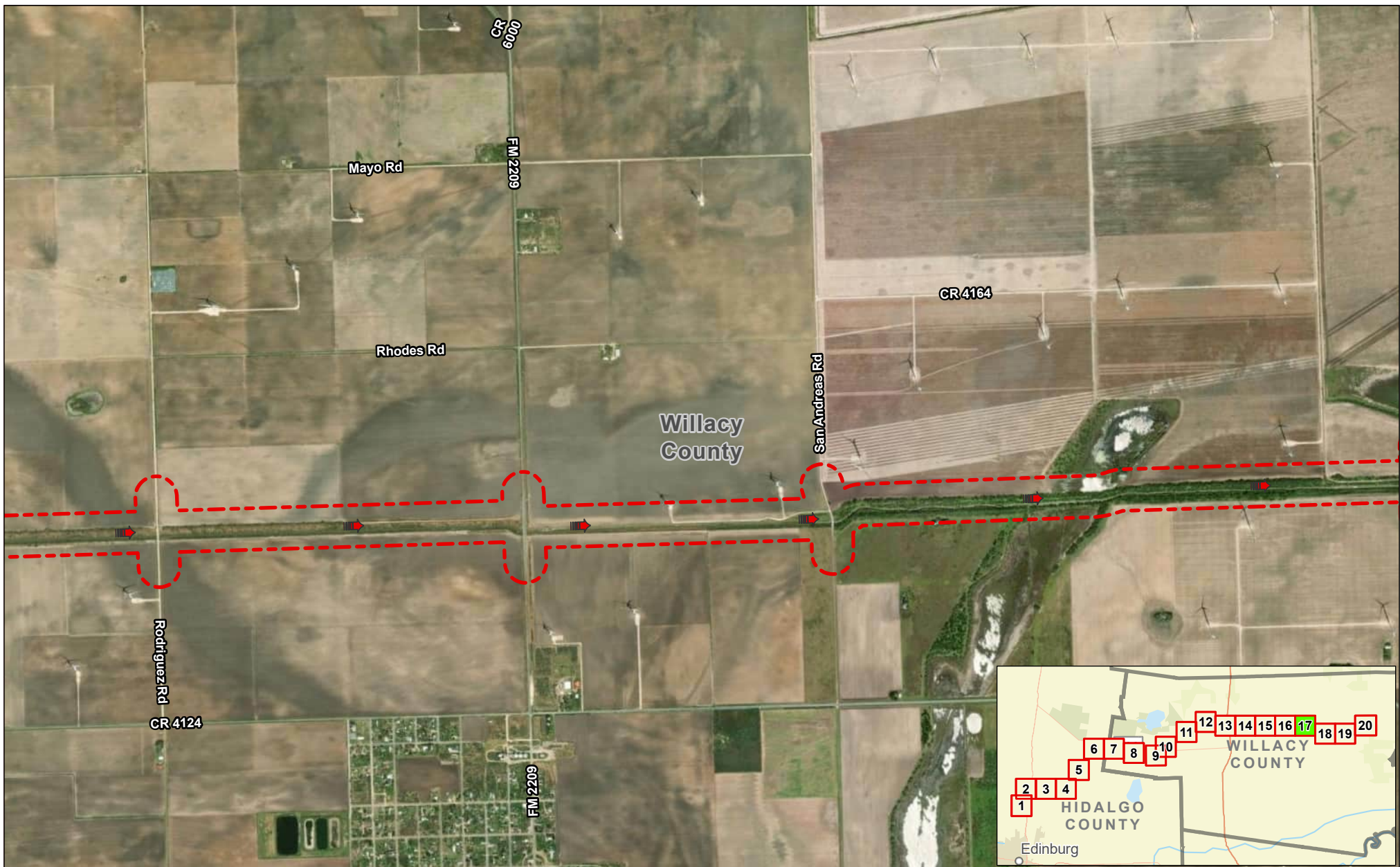


**Exhibit 4F  
Alternative 1  
Aerial Photograph (2022)  
Sheet 16 of 20  
Raymondville Drain Project**



Author : Joel F. Aguirre Updated : 10/5/2023

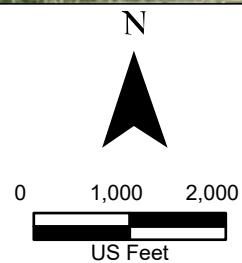
DISCLAIMER: RRP Consulting Engineers makes no guarantees as to the accuracy of data used in the construction of this map.





**Legend:**

-  Drain Flow
-  Study Corridor



**Exhibit 4F  
Alternative 1  
Aerial Photograph (2022)  
Sheet 17 of 20  
Raymondville Drain Project**



**Author :** Joel F. Aguirre **Updated :** 10/5/2023

DISCLAIMER: RRP Consulting Engineers makes no guarantees as to the accuracy of data used in the construction of this map.

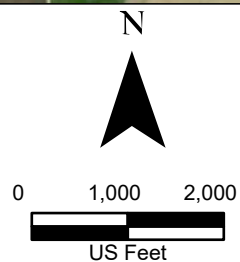




**Legend:**

-  Drain Flow
-  Study Corridor

Data Provenance: NAIP World Aerial Imagery (2022)



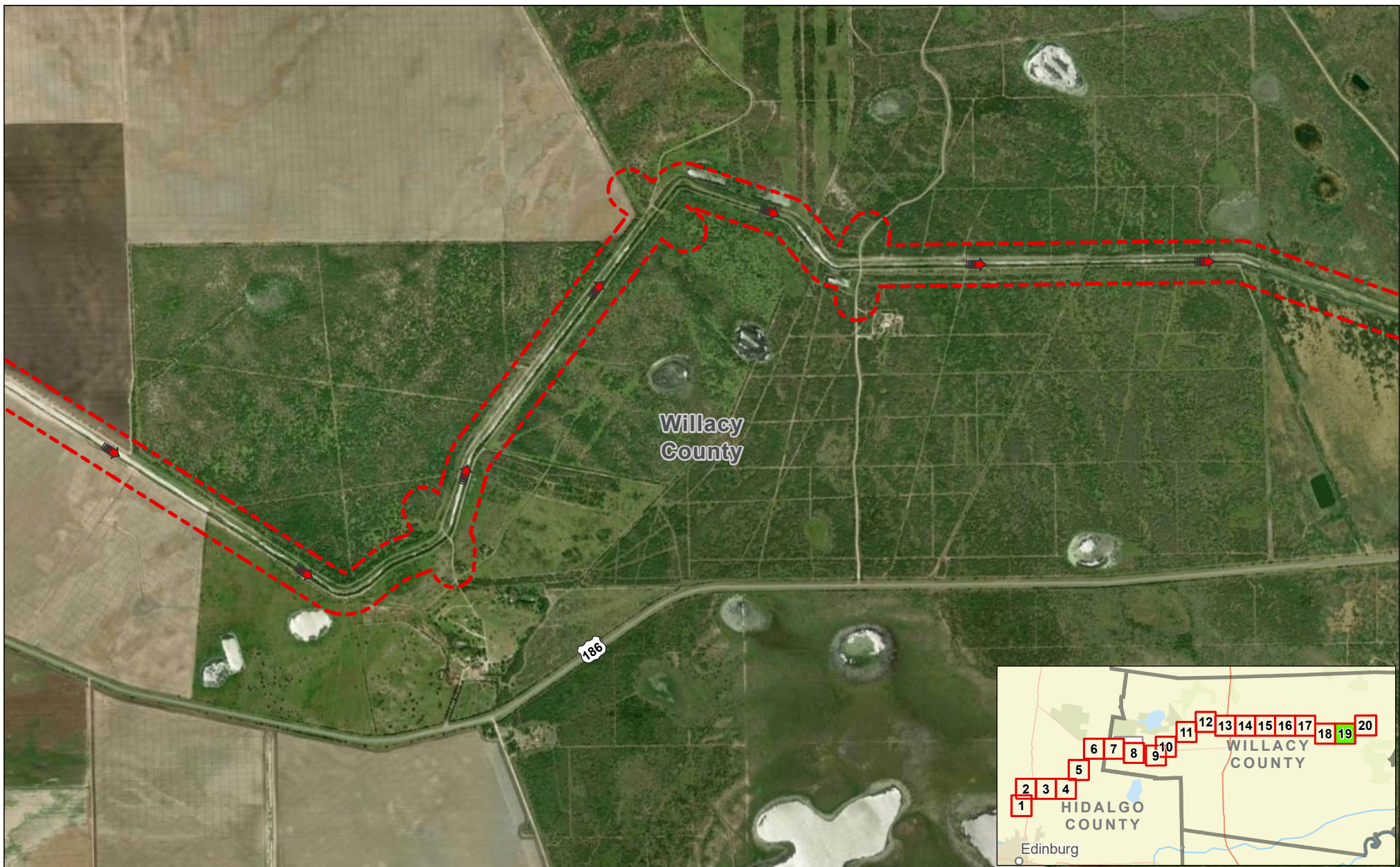
**Exhibit 4F  
Alternative 1  
Aerial Photograph (2022)  
Sheet 18 of 20  
Raymondville Drain Project**

Author : Joel F. Aguirre Updated : 10/5/2023



DISCLAIMER: RRP Consulting Engineers makes no guarantees as to the accuracy of data used in the construction of this map.

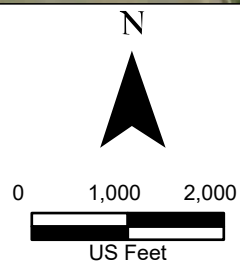
Path: S:\projects\4408\RAI\_ProjectRepository\GIS\RAI\_Sheet-to-End\_Series.aprx





**Legend:**

-  Drain Flow
-  Study Corridor

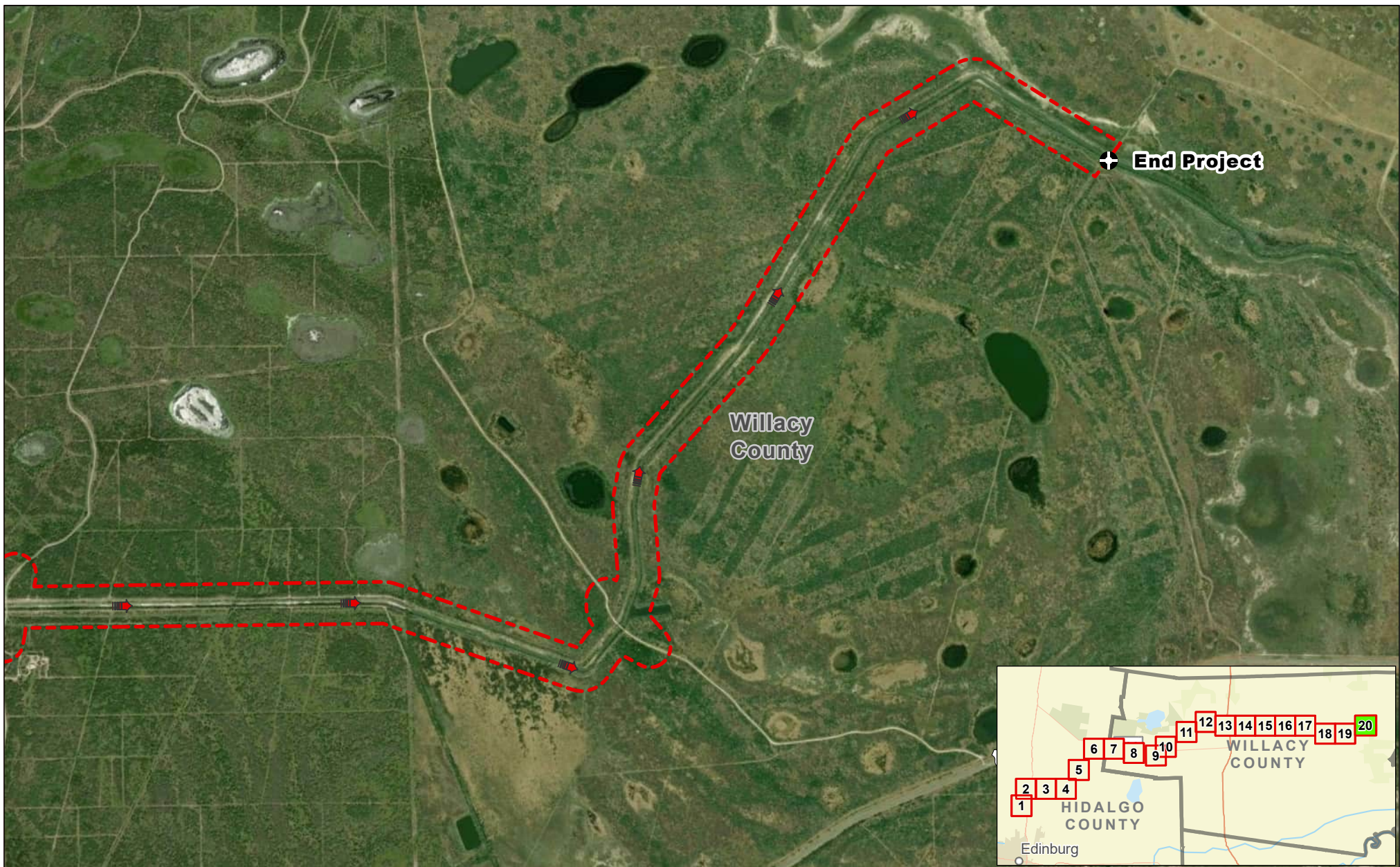


**Exhibit 4F  
Alternative 1  
Aerial Photograph (2022)  
Sheet 19 of 20  
Raymondville Drain Project**



Author : Joel F. Aguirre Updated : 10/5/2023

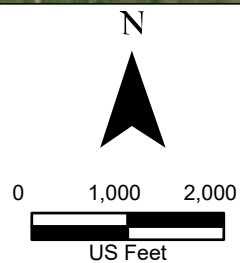
DISCLAIMER: RRP Consulting Engineers makes no guarantees as to the accuracy of data used in the construction of this map.





**Legend:**

-  Drain Flow
-  Study Corridor



**Exhibit 4F  
Alternative 1  
Aerial Photograph (2022)  
Sheet 20 of 20  
Raymondville Drain Project**

Author : Joel F. Aguirre Updated : 10/5/2023

DISCLAIMER: RRP Consulting Engineers makes no guarantees as to the accuracy of data used in the construction of this map.