

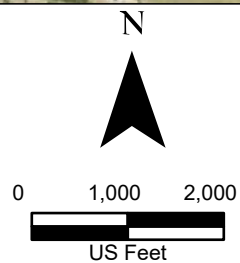




Legend:

-  Drain Flow
-  Study Corridor



**Exhibit 4F
Alternative 2
Aerial Photograph (2022)
Sheet 1 of 20
Raymondville Drain Project**

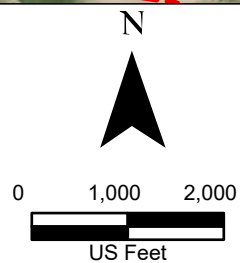
Author : Joel F. Aguirre Updated : 10/5/2023

DISCLAIMER: RRP Consulting Engineers makes no guarantees as to the accuracy of data used in the construction of this map.



Legend:

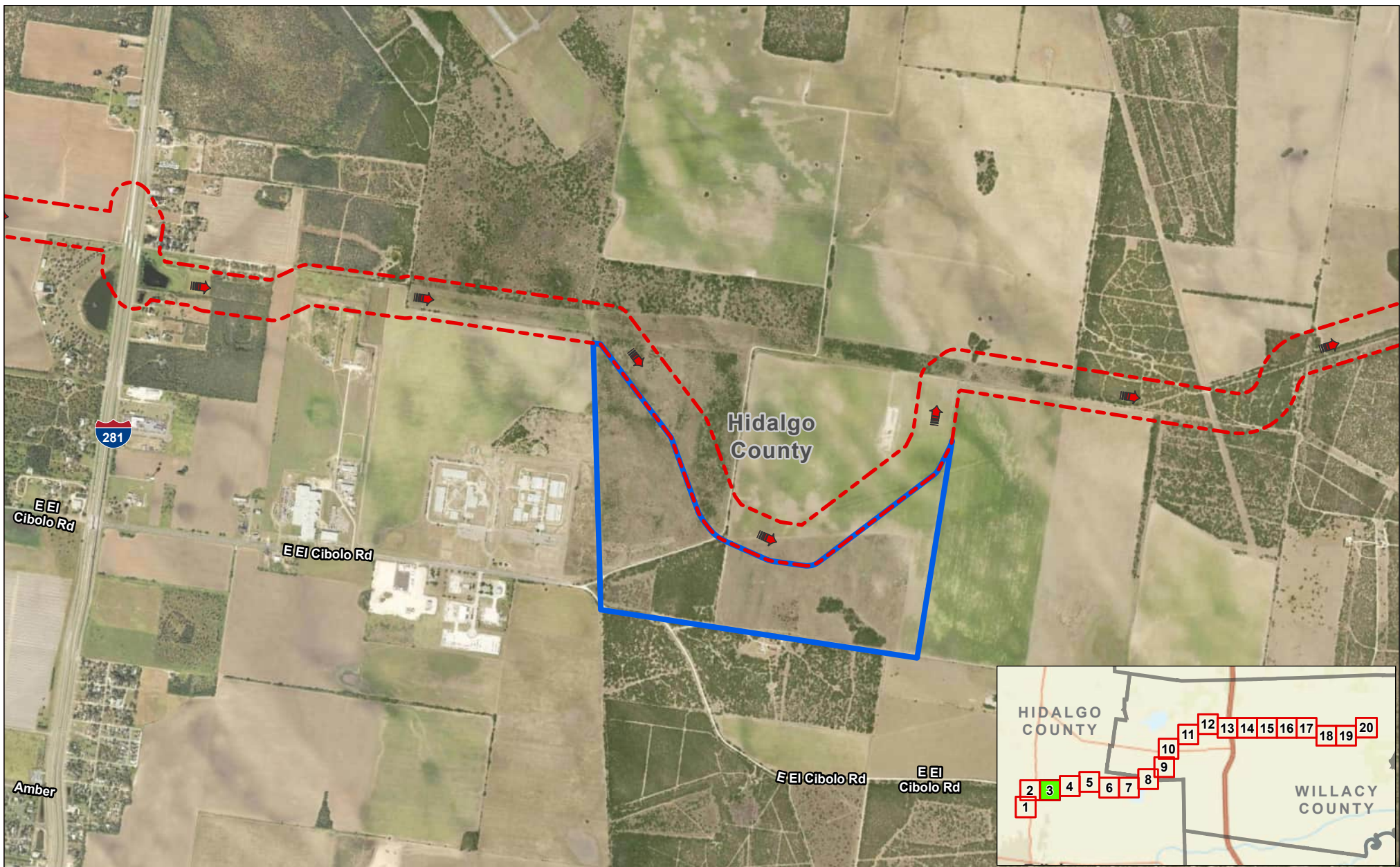
- Drain Flow
- Proposed Detention Basin
- Study Corridor



**Exhibit 4F
Alternative 2
Aerial Photograph (2022)
Sheet 2 of 20
Raymondville Drain Project**

Author : Joel F. Aguirre Updated : 10/5/2023

DISCLAIMER: RRP Consulting Engineers makes no guarantees as to the accuracy of data used in the construction of this map.



Legend:

- Drain Flow
- Proposed Detention Basin
- Study Corridor

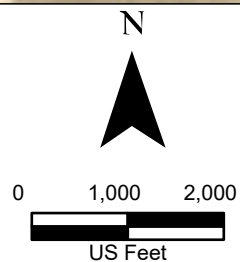





Exhibit 4F
Alternative 2
Aerial Photograph (2022)
Sheet 3 of 20
Raymondville Drain Project

Author : Joel F. Aguirre Updated : 10/5/2023

DISCLAIMER: RRP Consulting Engineers makes no guarantees as to the accuracy of data used in the construction of this map.



Legend:

-  Drain Flow
-  Proposed Detention Basin
-  Study Corridor

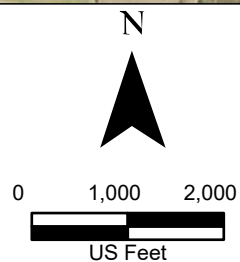
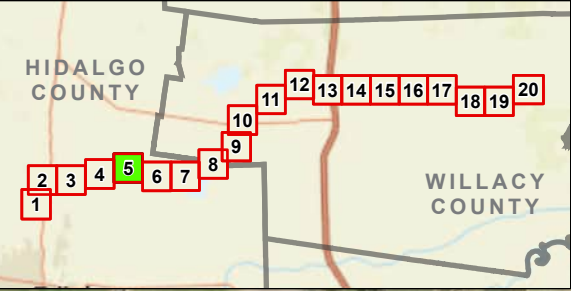
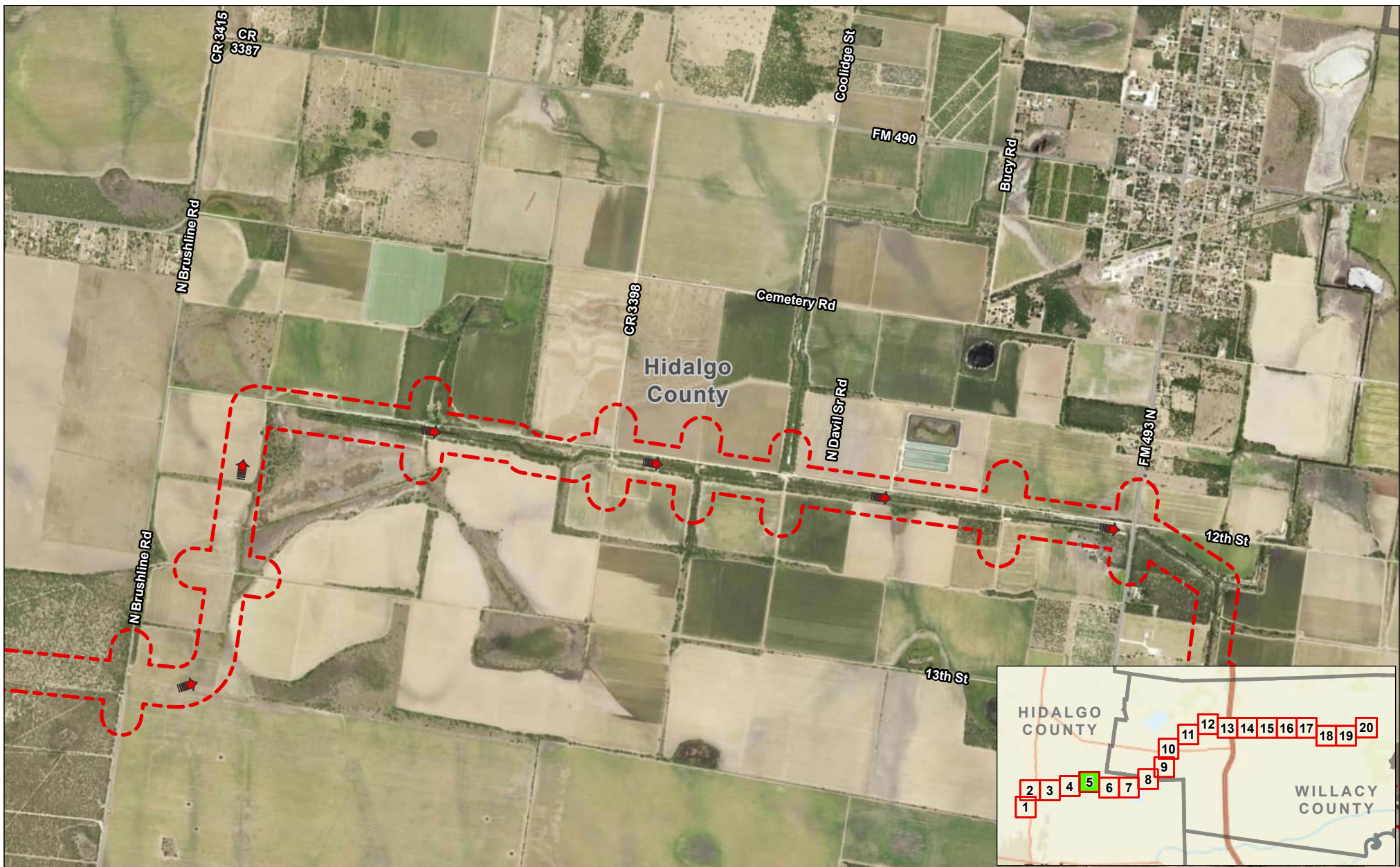




Exhibit 4F Alternative 2 Aerial Photograph (2022) Sheet 4 of 20 Raymondville Drain Project

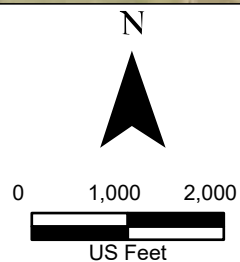
Author : Joel F. Aguirre Updated : 10/5/2023

DISCLAIMER: RRP Consulting Engineers makes no guarantees as to the accuracy of data used in the construction of this map.



Legend:

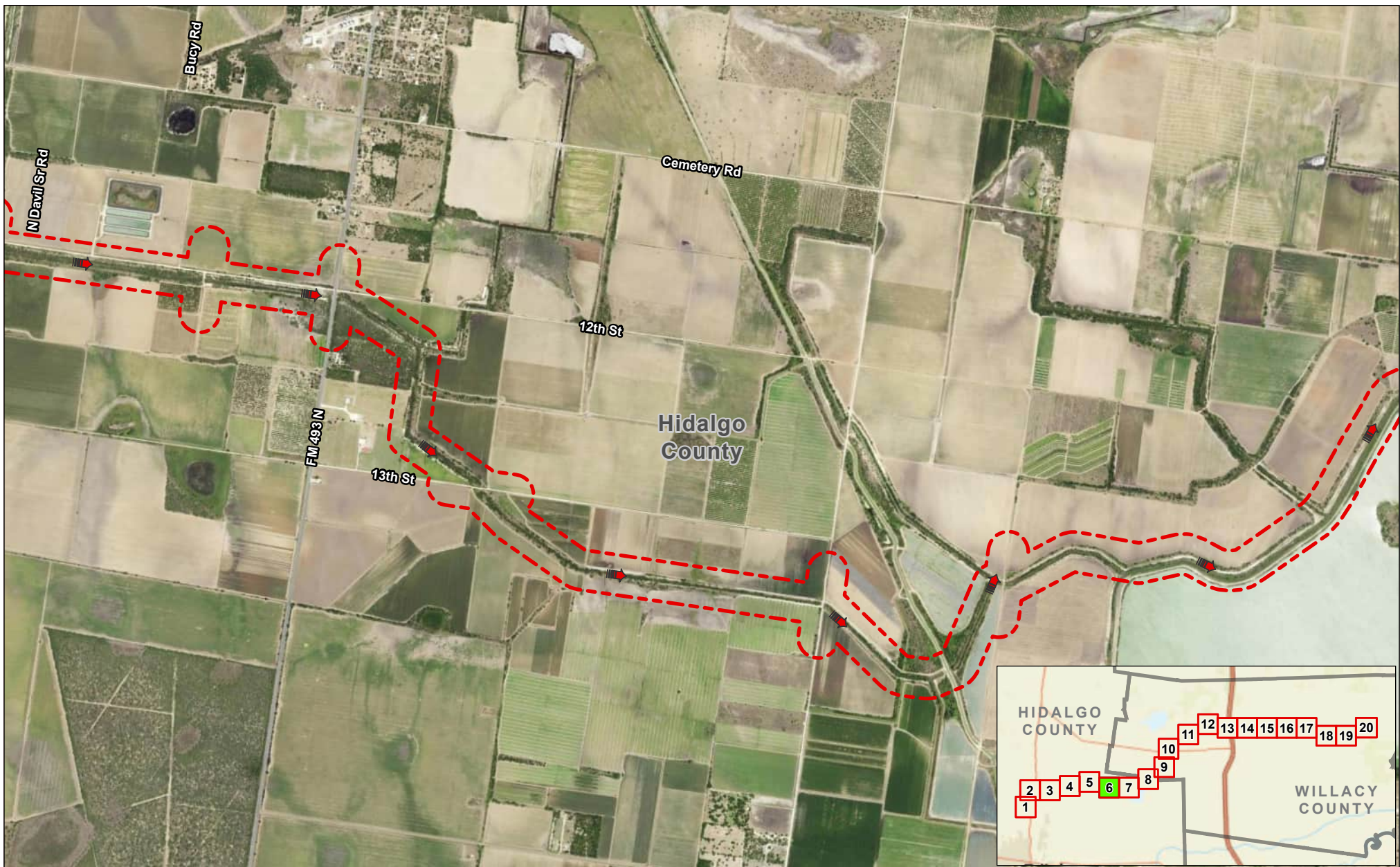
-  Drain Flow
-  Study Corridor





**Exhibit 4F
Alternative 2
Aerial Photograph (2022)
Sheet 5 of 20
Raymondville Drain Project**

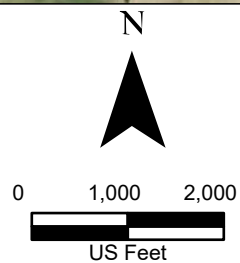
Author : Joel F. Aguirre Updated : 10/5/2023

DISCLAIMER: RRP Consulting Engineers makes no guarantees as to the accuracy of data used in the construction of this map.



Legend:

-  Drain Flow
-  Study Corridor






**Exhibit 4F
Alternative 2
Aerial Photograph (2022)
Sheet 6 of 20
Raymondville Drain Project**

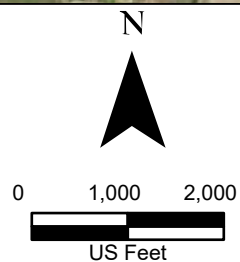
Author : Joel F. Aguirre Updated : 10/5/2023

DISCLAIMER: RRP Consulting Engineers makes no guarantees as to the accuracy of data used in the construction of this map.



Legend:

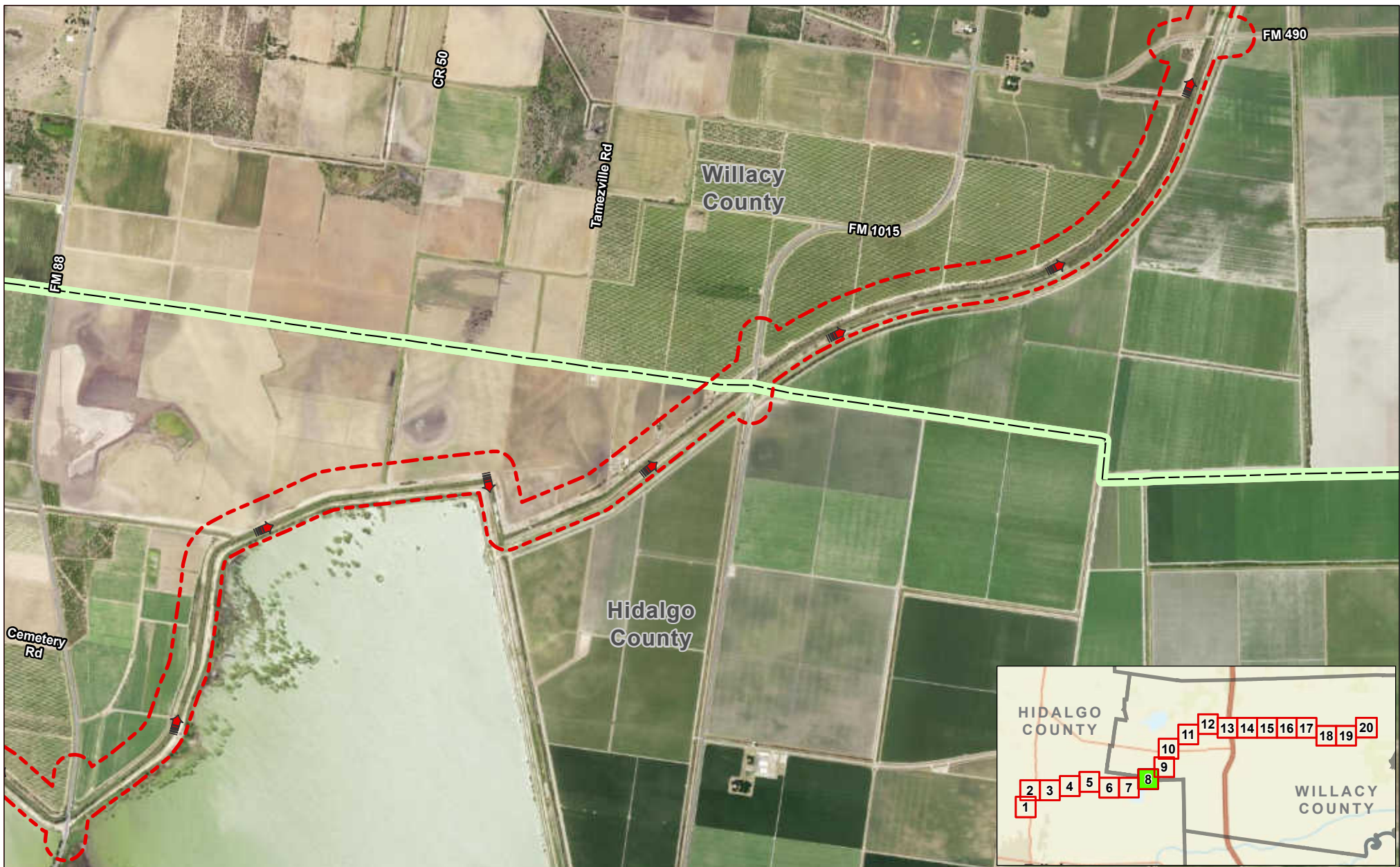
-  Drain Flow
-  Study Corridor
-  County Boundary






**Exhibit 4F
Alternative 2
Aerial Photograph (2022)
Sheet 7 of 20
Raymondville Drain Project**

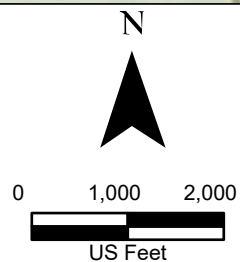
Author : Joel F. Aguirre Updated : 12/12/2023

DISCLAIMER: RRP Consulting Engineers makes no guarantees as to the accuracy of data used in the construction of this map.



Legend:

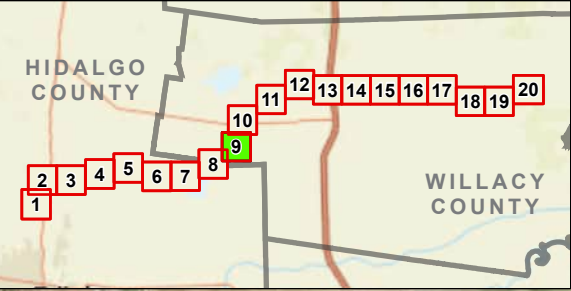
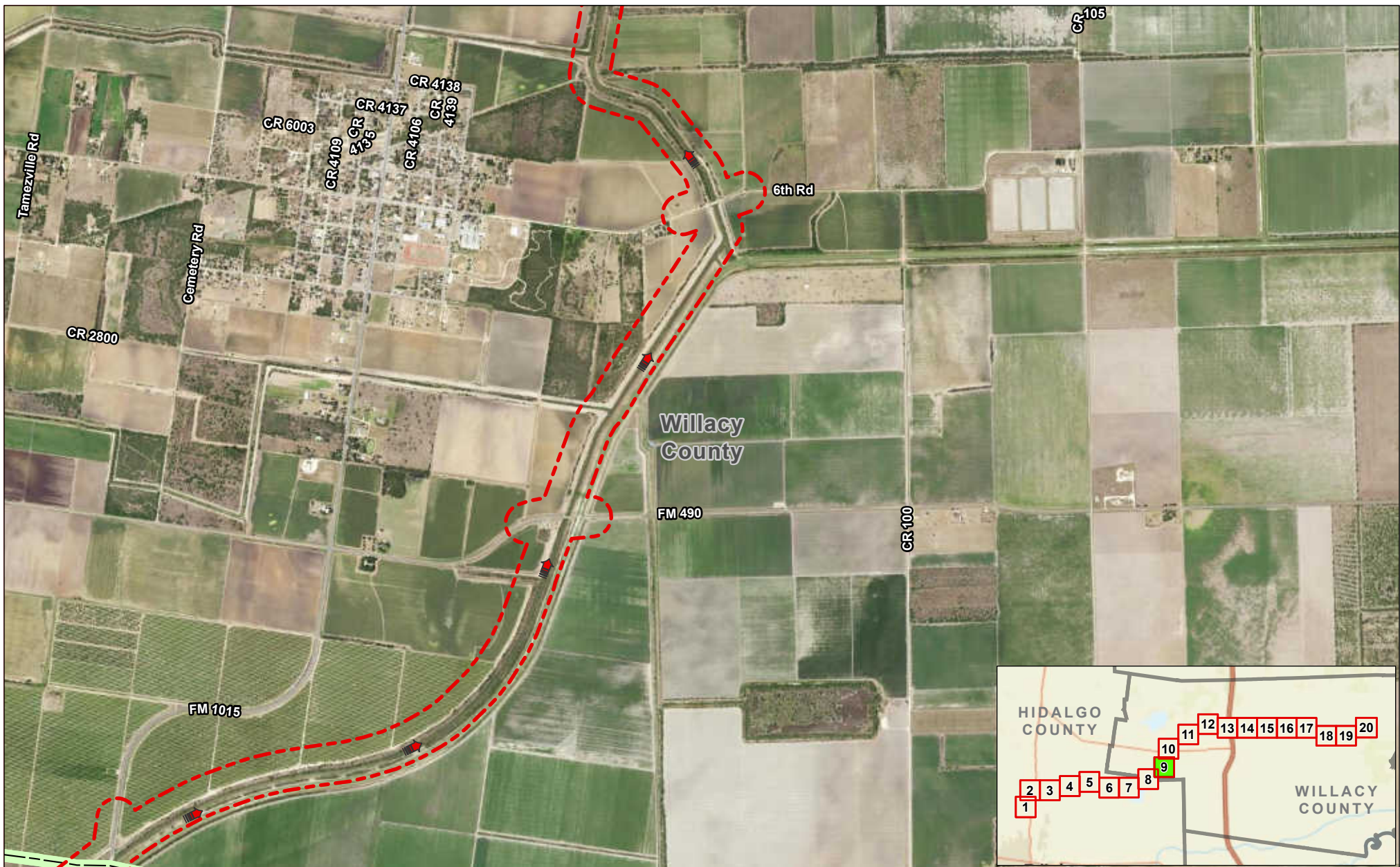
-  Drain Flow
-  Study Corridor
-  County Boundary



**Exhibit 4F
Alternative 2
Aerial Photograph (2022)
Sheet 8 of 20
Raymondville Drain Project**

Author : Joel F. Aguirre Updated : 12/12/2023

DISCLAIMER: RRP Consulting Engineers makes no guarantees as to the accuracy of data used in the construction of this map.



Legend:

- Drain Flow
- Study Corridor
- County Boundary

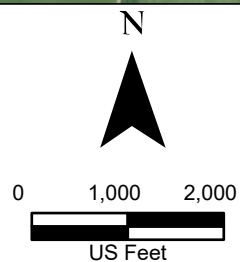




Exhibit 4F **Alternative 2** **Aerial Photograph (2022)** **Sheet 9 of 20** **Raymondville Drain Project**

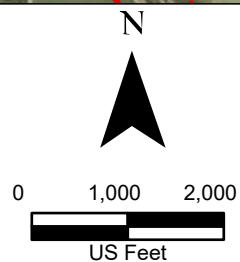
Author : Joel F. Aguirre **Updated :** 12/12/2023

DISCLAIMER: RRP Consulting Engineers makes no guarantees as to the accuracy of data used in the construction of this map.



Legend:

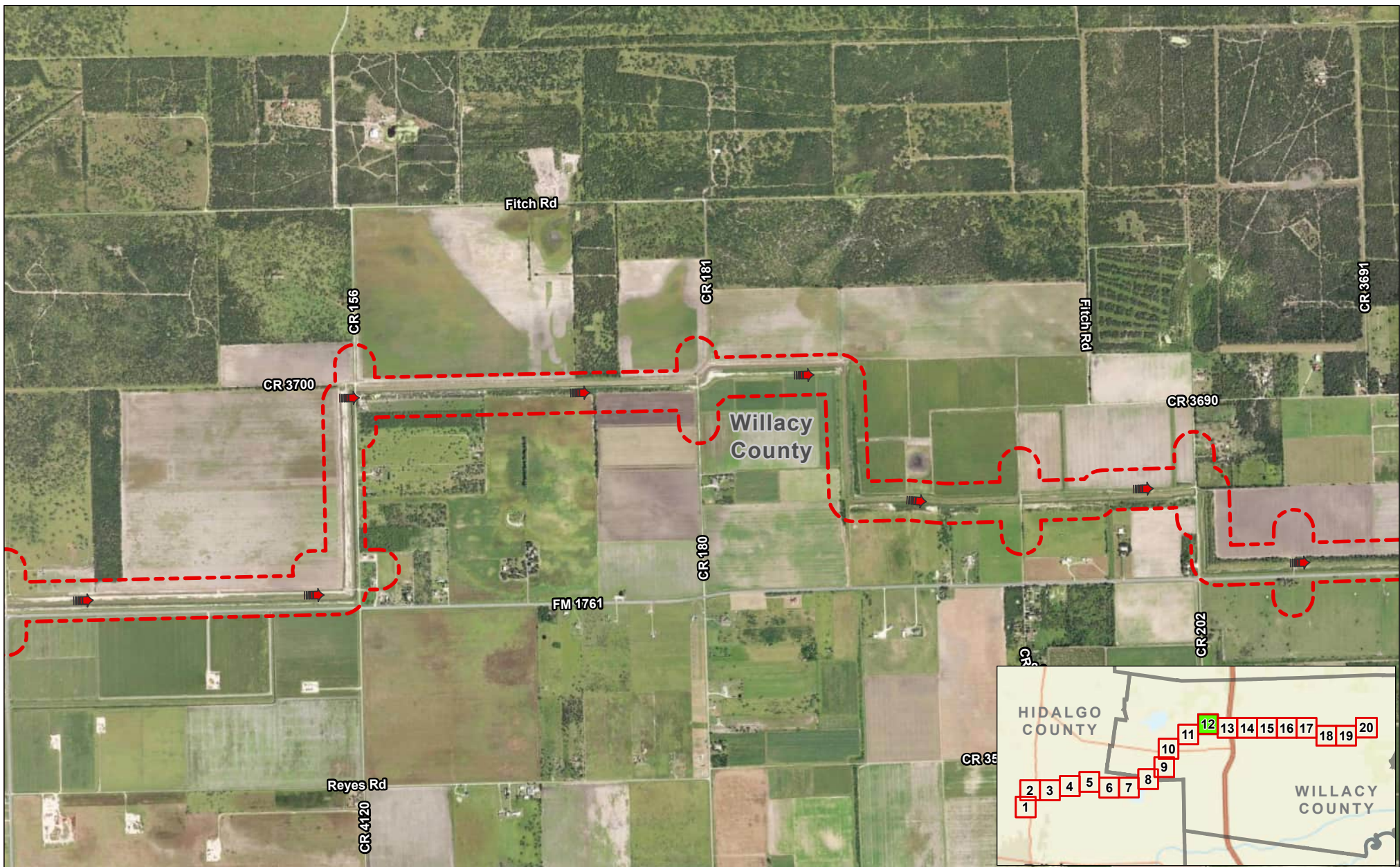
-  Drain Flow
-  Study Corridor





**Exhibit 4F
Alternative 2
Aerial Photograph (2022)
Sheet 10 of 20
Raymondville Drain Project**

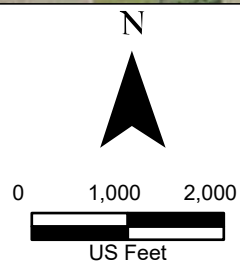
Author : Joel F. Aguirre Updated : 10/5/2023

DISCLAIMER: RRP Consulting Engineers makes no guarantees as to the accuracy of data used in the construction of this map.



Legend:

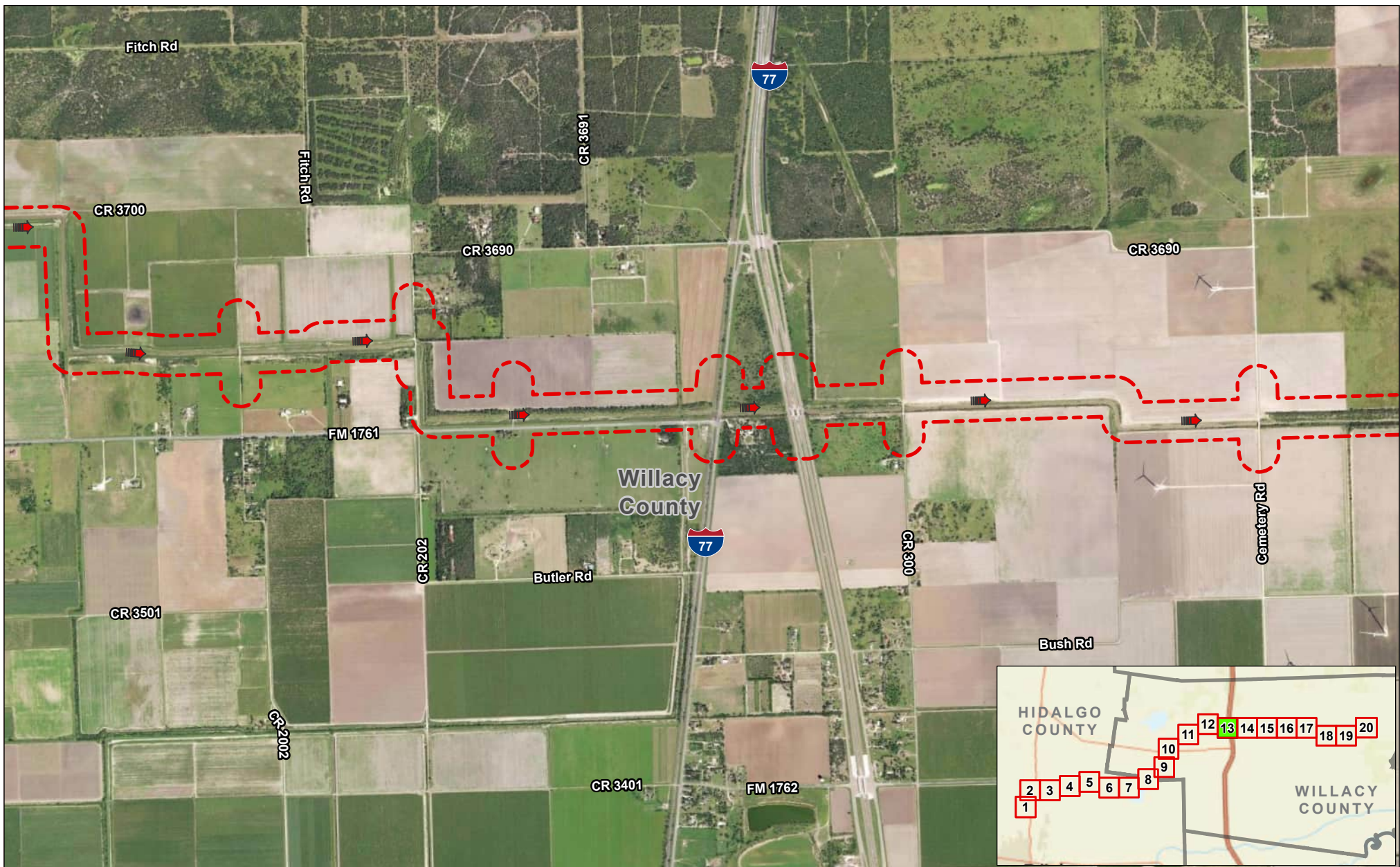
-  Drain Flow
-  Study Corridor





**Exhibit 4F
Alternative 2
Aerial Photograph (2022)
Sheet 12 of 20
Raymondville Drain Project**

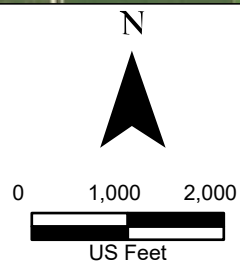
Author : Joel F. Aguirre Updated : 10/5/2023

DISCLAIMER: RRP Consulting Engineers makes no guarantees as to the accuracy of data used in the construction of this map.



Legend:

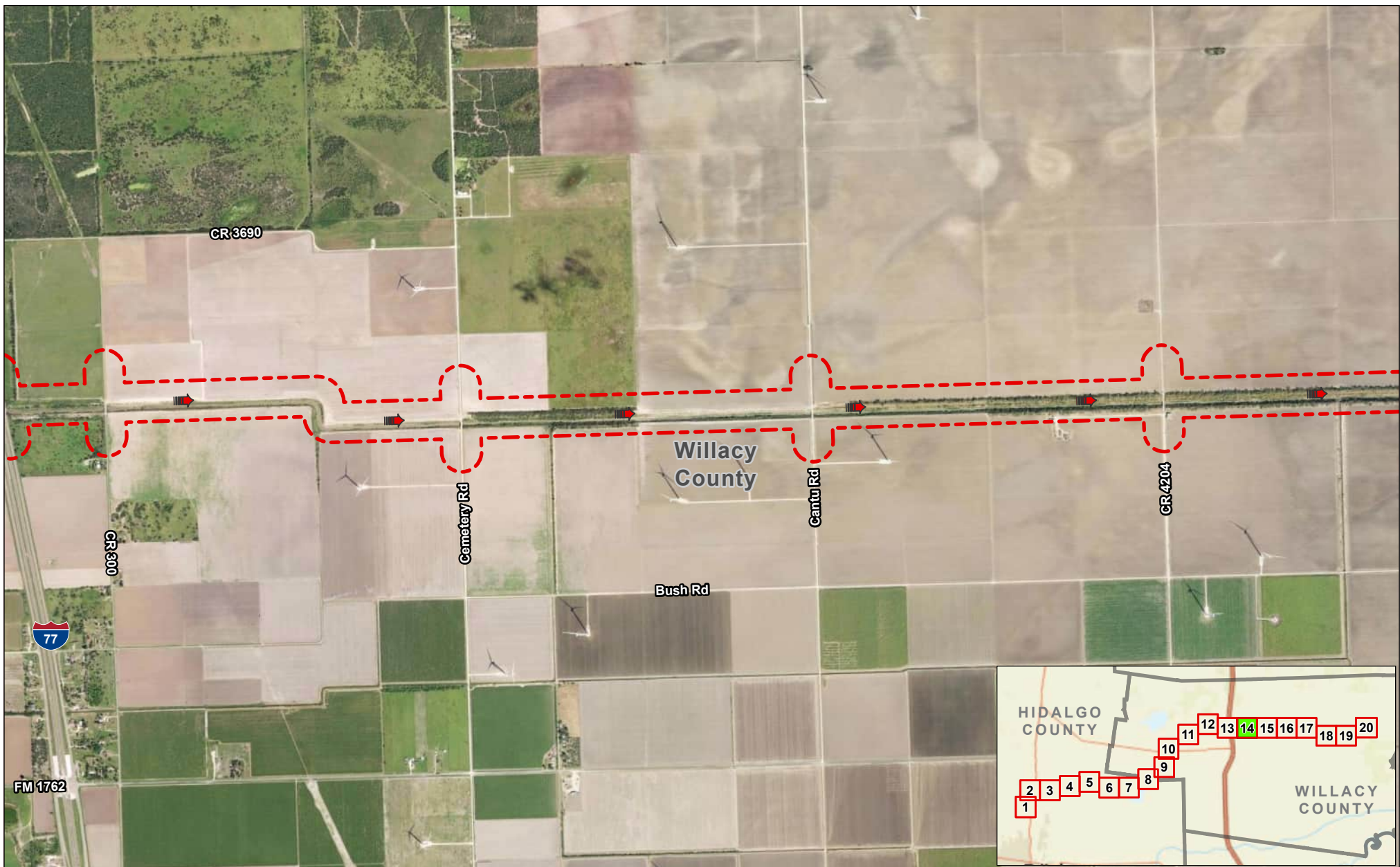
-  Drain Flow
-  Study Corridor





**Exhibit 4F
Alternative 2
Aerial Photograph (2022)
Sheet 13 of 20
Raymondville Drain Project**

Author : Joel F. Aguirre Updated : 10/5/2023

DISCLAIMER: RRP Consulting Engineers makes no guarantees as to the accuracy of data used in the construction of this map.



Legend:

-  Drain Flow
-  Study Corridor

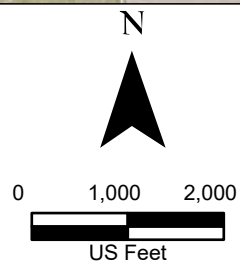





Exhibit 4F Alternative 2 Aerial Photograph (2022) Sheet 14 of 20 Raymondville Drain Project

Author : Joel F. Aguirre Updated : 10/5/2023



DISCLAIMER: RRP Consulting Engineers makes no guarantees as to the accuracy of data used in the construction of this map.



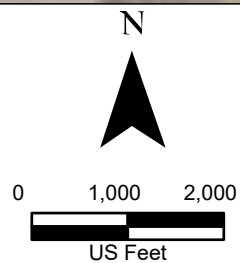
<p>Legend:</p> <p> Drain Flow</p> <p> Study Corridor</p>	<p>N</p>  <p>0 1,000 2,000</p>  <p>US Feet</p>	<p>HIDALGO COUNTY WILLACY COUNTY</p>  <p>TX</p>	 	<p align="center">Exhibit 4F Alternative 2 Aerial Photograph (2022) Sheet 15 of 20 Raymondville Drain Project</p> <table border="1"> <tr> <td>Author : Joel F. Aguirre</td> <td>Updated : 10/5/2023</td> </tr> </table> <p><small>DISCLAIMER: RRP Consulting Engineers makes no guarantees as to the accuracy of data used in the construction of this map.</small></p> <p><small>Path: D:\projects\44085\RAI_Project\Raymondville\GIS\RDSP_2022to2023_Series.aprx</small></p>	Author : Joel F. Aguirre	Updated : 10/5/2023
Author : Joel F. Aguirre	Updated : 10/5/2023					



Legend:

-  Drain Flow
-  Study Corridor

Data Provenance: NAIP World Aerial Imagery (2022)



**Exhibit 4F
Alternative 2
Aerial Photograph (2022)
Sheet 16 of 20
Raymondville Drain Project**



Author : Joel F. Aguirre Updated : 10/5/2023

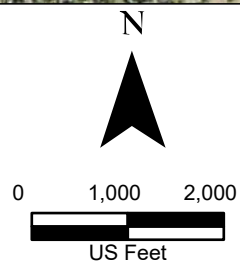
DISCLAIMER: RRP Consulting Engineers makes no guarantees as to the accuracy of data used in the construction of this map.

Path: D:\projects\44088\RAI_ProjectRepository\GIS\RAI_Drain-to-End_Series.aprx



Legend:

-  Drain Flow
-  Study Corridor





**Exhibit 4F
Alternative 2
Aerial Photograph (2022)
Sheet 17 of 20
Raymondville Drain Project**

Author : Joel F. Aguirre Updated : 10/5/2023

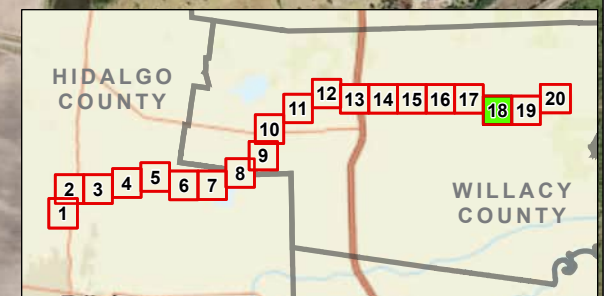
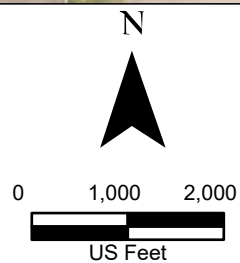
DISCLAIMER: RRP Consulting Engineers makes no guarantees as to the accuracy of data used in the construction of this map.



Legend:

-  Drain Flow
-  Study Corridor

Data Provenance: NAIP World Aerial Imagery (2022)



**Exhibit 4F
Alternative 2
Aerial Photograph (2022)
Sheet 18 of 20
Raymondville Drain Project**



Author : Joel F. Aguirre Updated : 10/5/2023

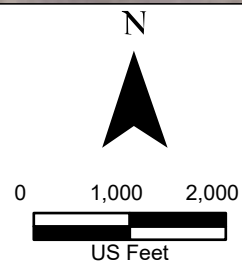
DISCLAIMER: RRP Consulting Engineers makes no guarantees as to the accuracy of data used in the construction of this map.

Path: D:\projects\44088\RAI_ProjectRepository\GIS\RAI_Series\RAI_Series.aprx



Legend:

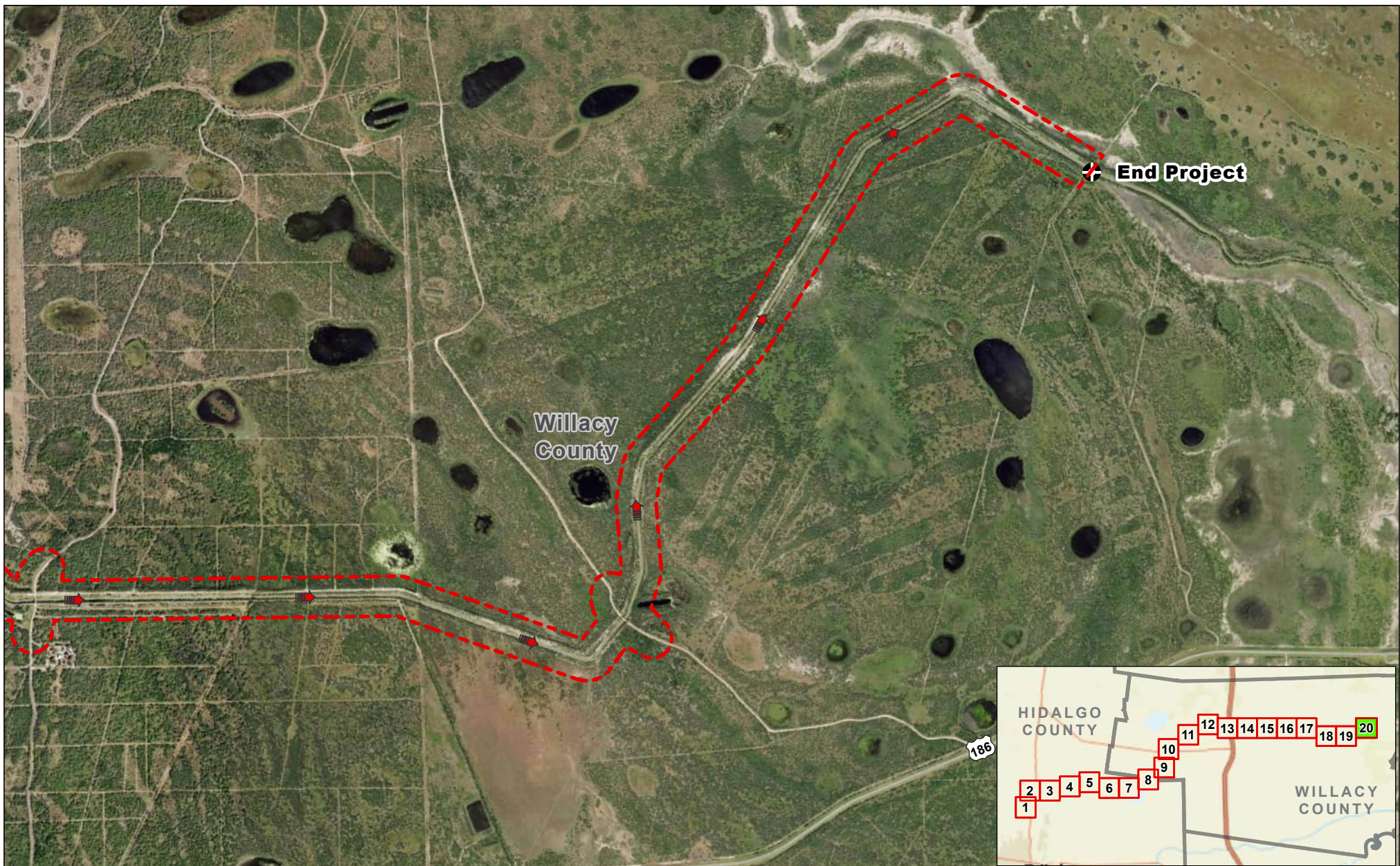
-  Drain Flow
-  Study Corridor





**Exhibit 4F
Alternative 2
Aerial Photograph (2022)
Sheet 19 of 20
Raymondville Drain Project**

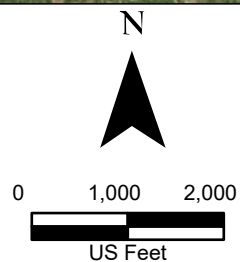
Author : Joel F. Aguirre Updated : 10/5/2023

DISCLAIMER: RRP Consulting Engineers makes no guarantees as to the accuracy of data used in the construction of this map.



Legend:

-  Drain Flow
-  Study Corridor



**Exhibit 4F
Alternative 2
Aerial Photograph (2022)
Sheet 20 of 20
Raymondville Drain Project**

Author : Joel F. Aguirre Updated : 10/5/2023

DISCLAIMER: RRP Consulting Engineers makes no guarantees as to the accuracy of data used in the construction of this map.