

Legend:

- Alternative 1 Study Corridor
- Proposed Flooding Envelope
- Existing Flooding Envelope

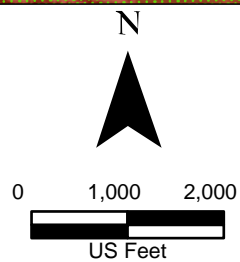






Exhibit 9A Alternative 1 Flooding Envelope Map Page 1 of 20 Raymondville Drain Project

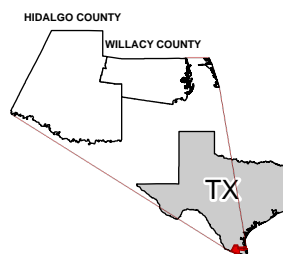
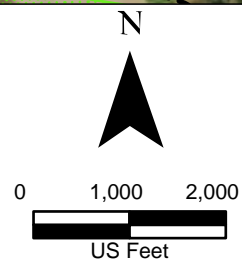
Author : Joel F. Aguirre Updated : 3/21/2024

DISCLAIMER: RRP Consulting Engineers makes no guarantees as to the accuracy of party data used in the construction of this map.



Legend:

-  Alternative 1 Study Corridor
-  Proposed Detention Basin
-  Proposed Flooding Envelope
-  Existing Flooding Envelope



**Exhibit 9A
Alternative 1
Flooding Envelope Map
Page 2 of 20
Raymondville Drain Project**

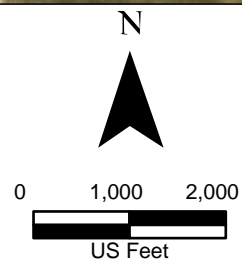
Author : Joel F. Aguirre Updated : 3/21/2024

DISCLAIMER: RRP Consulting Engineers makes no guarantees as to the accuracy of party data used in the construction of this map.



Legend:

- Alternative 1 Study Corridor
- Proposed Detention Basin
- Proposed Flooding Envelope
- Existing Flooding Envelope







**Exhibit 9A
Alternative 1
Flooding Envelope Map
Page 3 of 20
Raymondville Drain Project**

Author : Joel F. Aguirre Updated : 3/21/2024

DISCLAIMER: RRP Consulting Engineers makes no guarantees as to the accuracy of party data used in the construction of this map.



Legend:

-  Alternative 1 Study Corridor
-  Proposed Detention Basin
-  Proposed Flooding Envelope
-  Existing Flooding Envelope

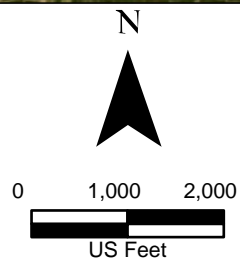





Exhibit 9A Alternative 1 Flooding Envelope Map Page 4 of 20 Raymondville Drain Project

Author : Joel F. Aguirre Updated : 3/21/2024

DISCLAIMER: RRP Consulting Engineers makes no guarantees as to the accuracy of party data used in the construction of this map.



Legend:

-  Alternative 1 Study Corridor
-  Proposed Flooding Envelope
-  Existing Flooding Envelope

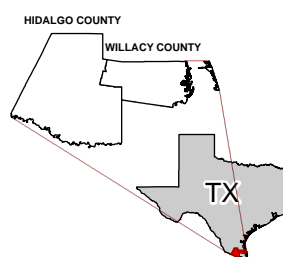
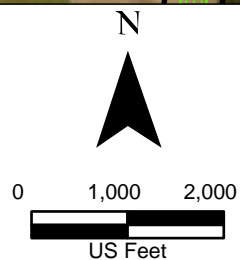
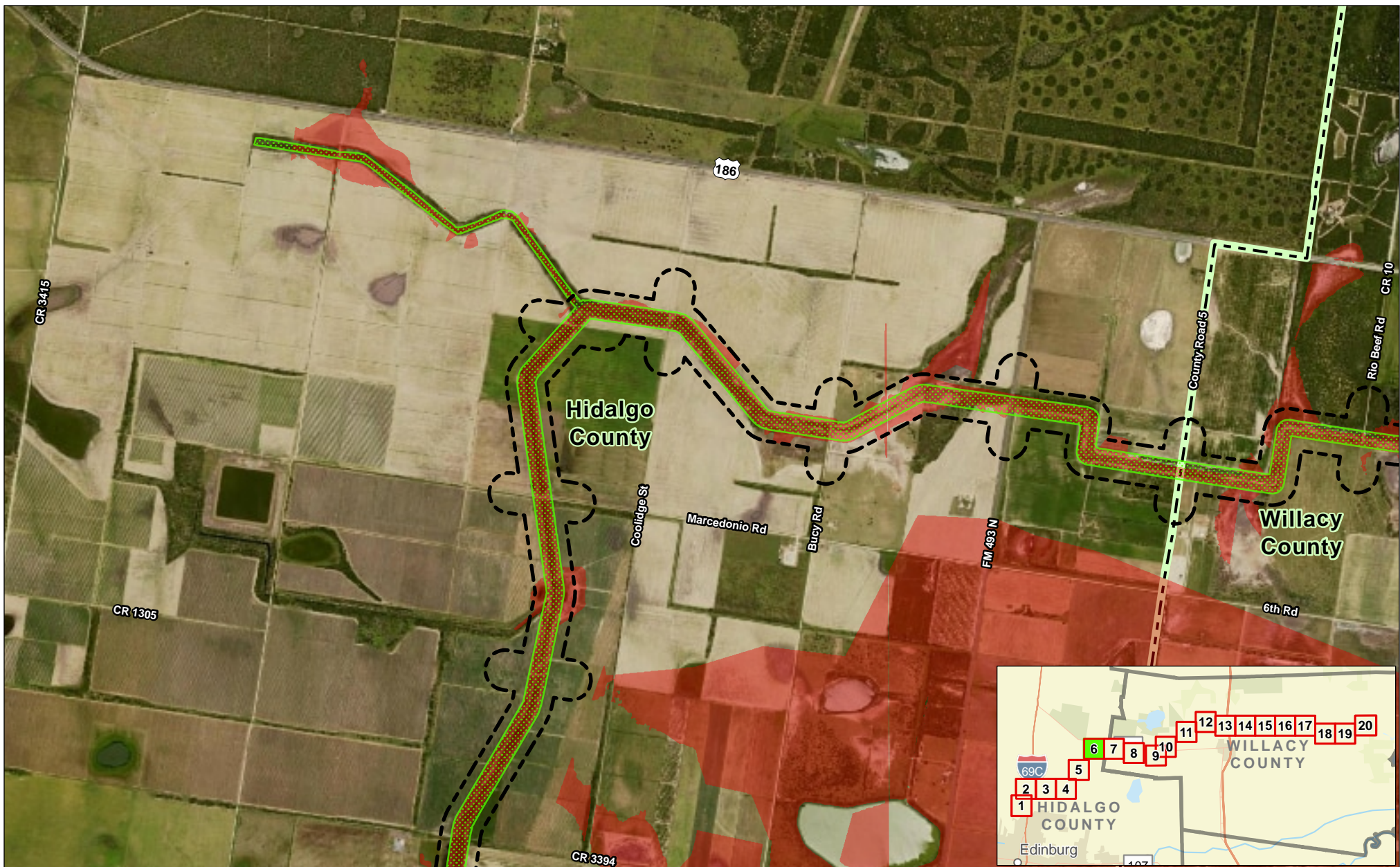


Exhibit 9A Alternative 1 Flooding Envelope Map Page 5 of 20 Raymondville Drain Project

Author : Joel F. Aguirre Updated : 3/21/2024

DISCLAIMER: RRP Consulting Engineers makes no guarantees as to the accuracy of party data used in the construction of this map.



Legend:

- Alternative 1 Study Corridor
- Proposed Flooding Envelope
- Existing Flooding Envelope
- County Boundary

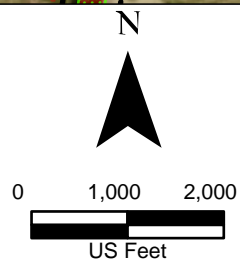
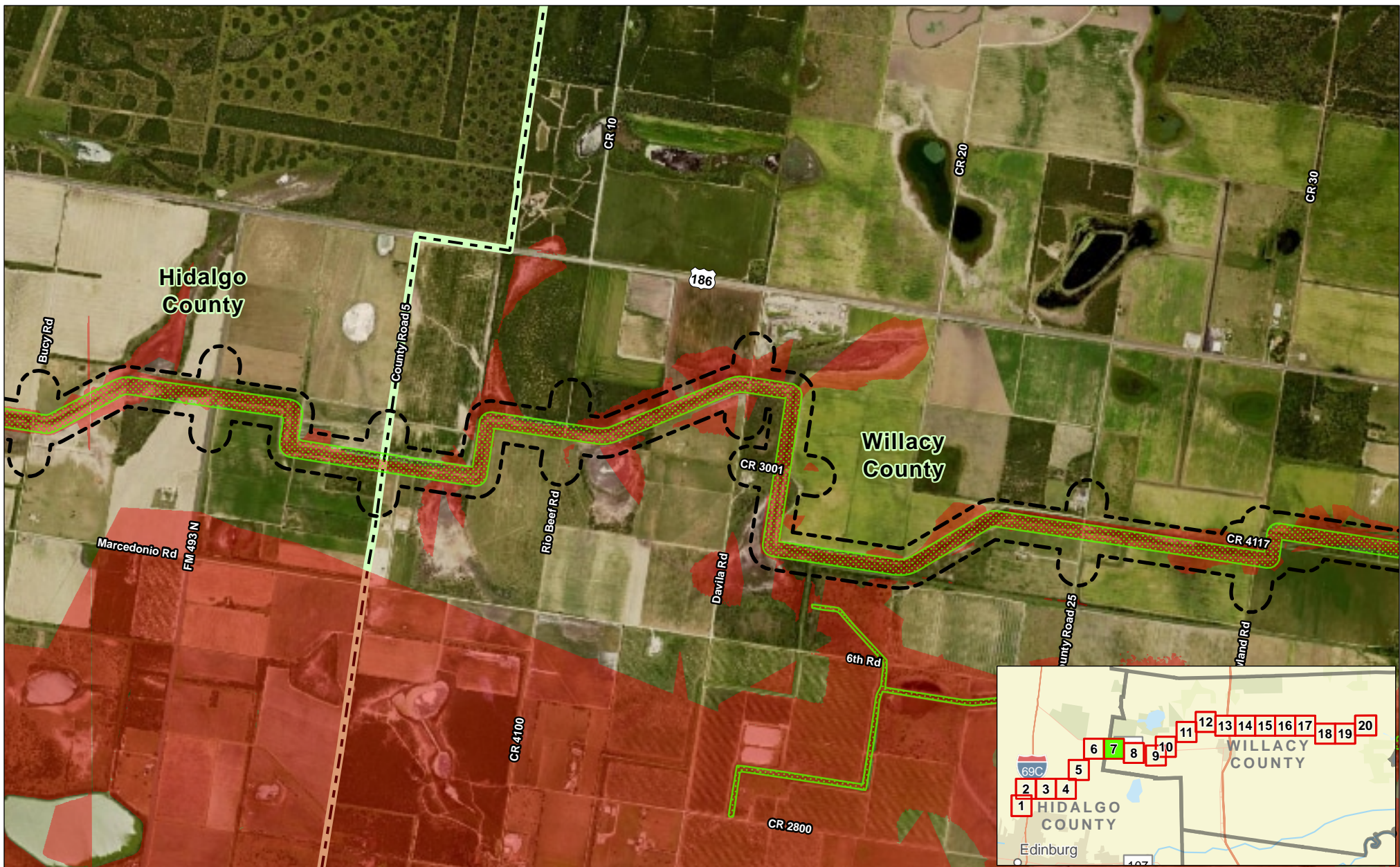


Exhibit 9A Alternative 1 Flooding Envelope Map Page 6 of 20 Raymondville Drain Project

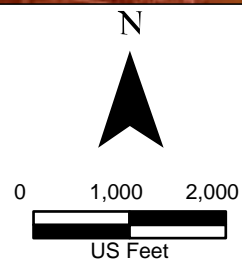
Author : Joel F. Aguirre Updated : 3/21/2024

DISCLAIMER: RRP Consulting Engineers makes no guarantees as to the accuracy of party data used in the construction of this map.



Legend:

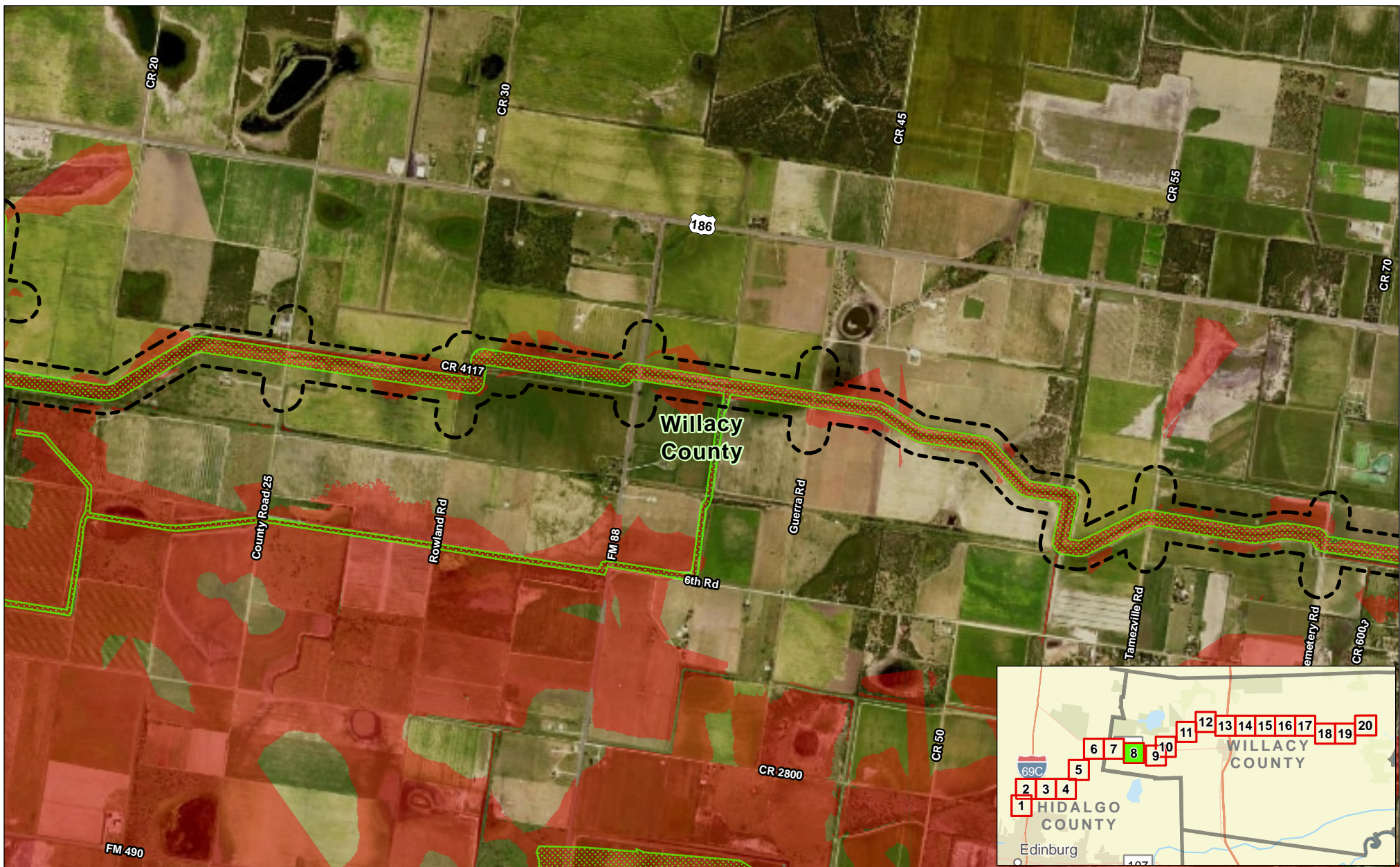
- Alternative 1 Study Corridor
- Proposed Flooding Envelope
- Existing Flooding Envelope
- County Boundary



**Exhibit 9A
Alternative 1
Flooding Envelope Map
Page 7 of 20
Raymondville Drain Project**

Author : Joel F. Aguirre Updated : 3/21/2024

DISCLAIMER: RRP Consulting Engineers makes no guarantees as to the accuracy of party data used in the construction of this map.



Legend:

- Alternative 1 Study Corridor
- Proposed Flooding Envelope
- Existing Flooding Envelope

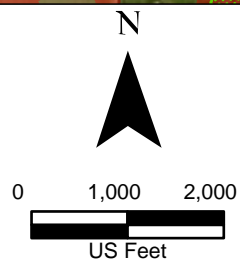
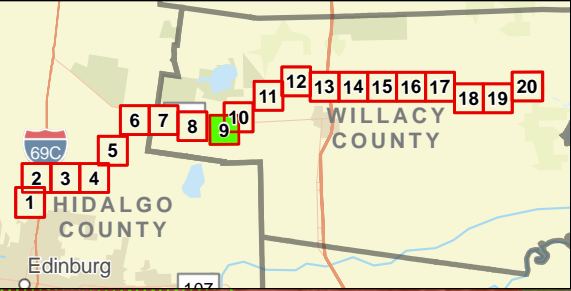
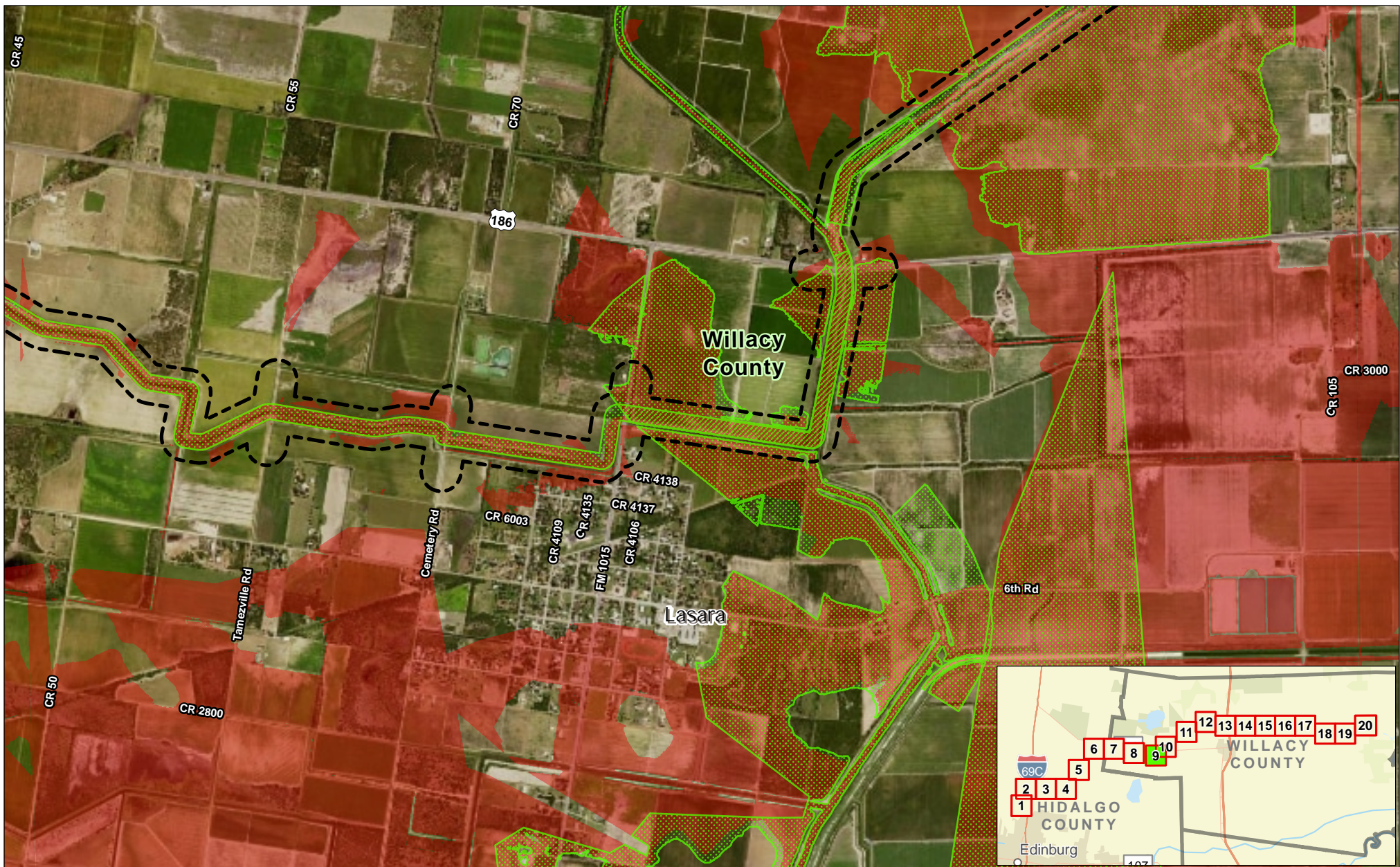


Exhibit 9A Alternative 1 Flooding Envelope Map Page 8 of 20 Raymondville Drain Project

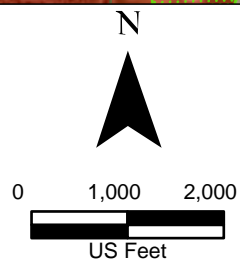
Author : Joel F. Aguirre Updated : 3/21/2024

DISCLAIMER: RRP Consulting Engineers makes no guarantees as to the accuracy of party data used in the construction of this map.



Legend:

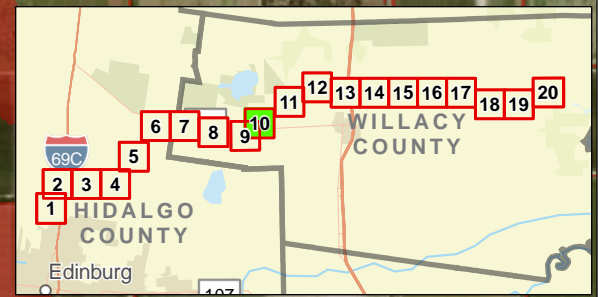
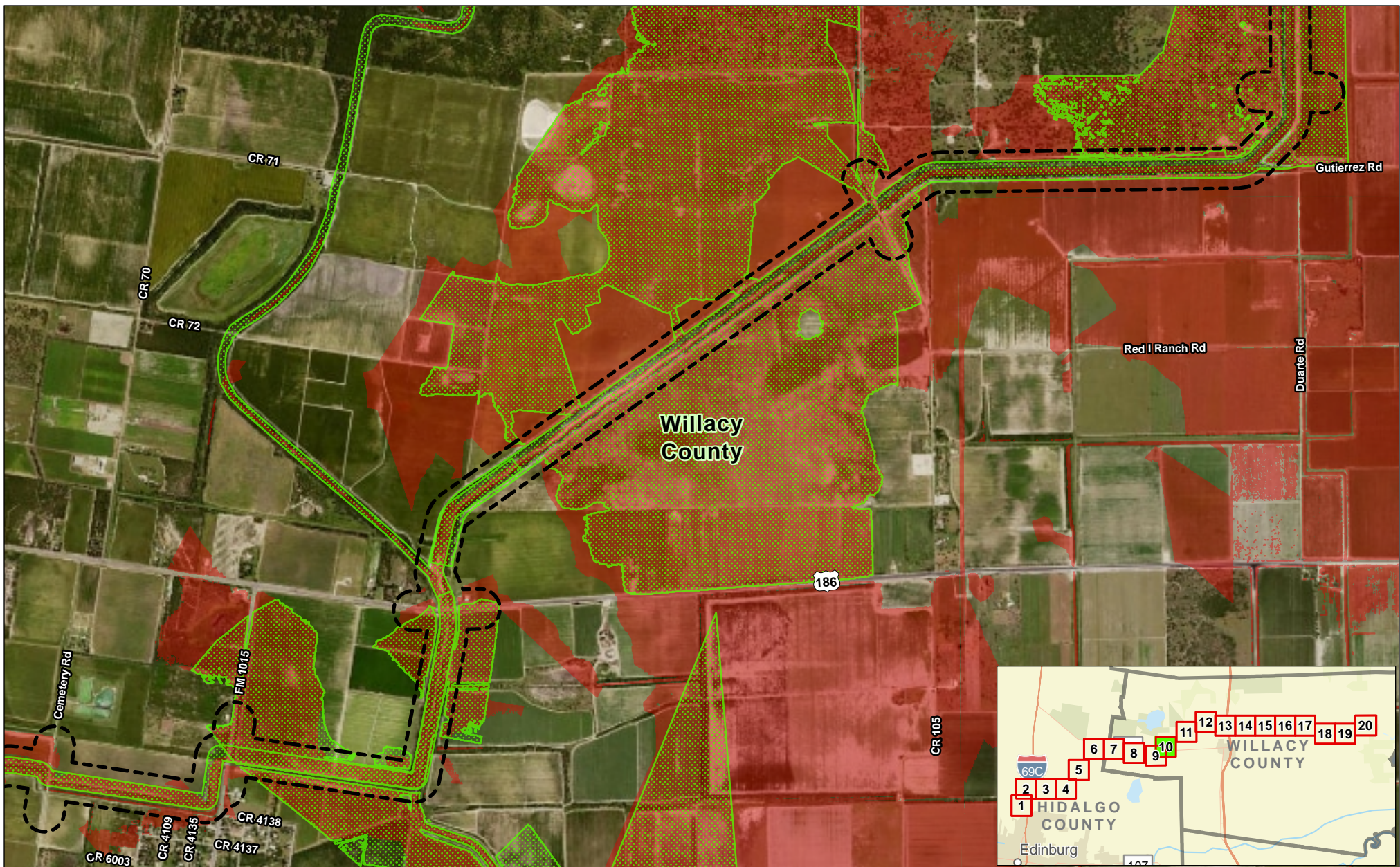
- Alternative 1 Study Corridor
- Proposed Flooding Envelope
- Existing Flooding Envelope



**Exhibit 9A
Alternative 1
Flooding Envelope Map
Page 9 of 20
Raymondville Drain Project**

Author : Joel F. Aguirre Updated : 3/21/2024

DISCLAIMER: RRP Consulting Engineers makes no guarantees as to the accuracy of party data used in the construction of this map.



Legend:

- Alternative 1 Study Corridor
- Proposed Flooding Envelope
- Existing Flooding Envelope

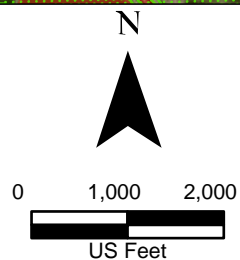
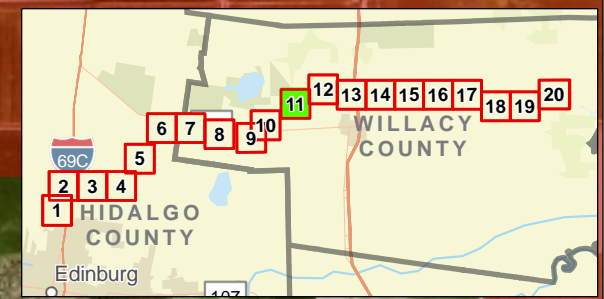
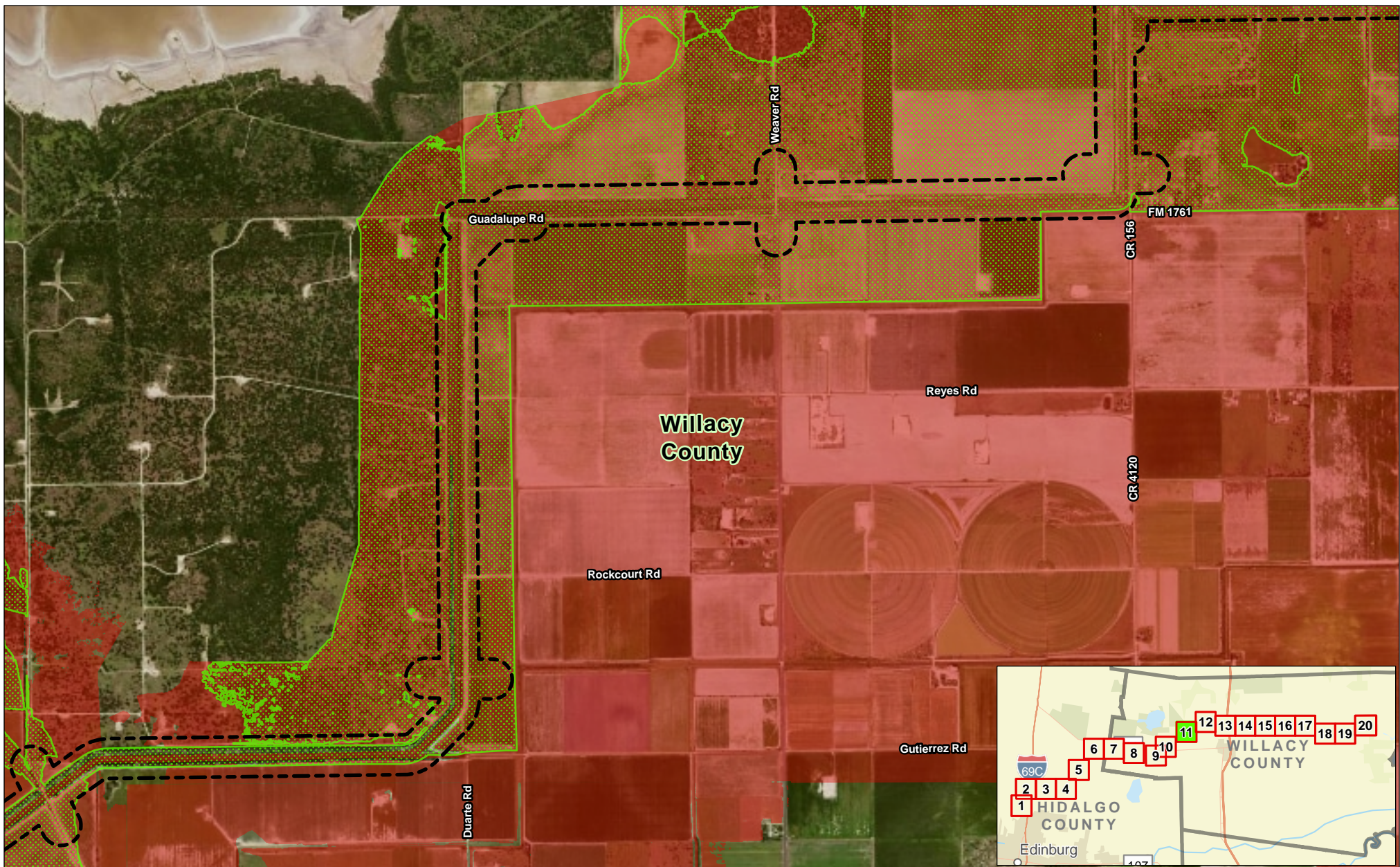





Exhibit 9A Alternative 1 Flooding Envelope Map Page 10 of 20 Raymondville Drain Project

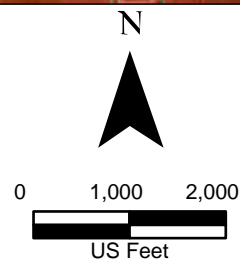
Author : Joel F. Aguirre Updated : 3/21/2024

DISCLAIMER: RRP Consulting Engineers makes no guarantees as to the accuracy of party data used in the construction of this map.



Legend:

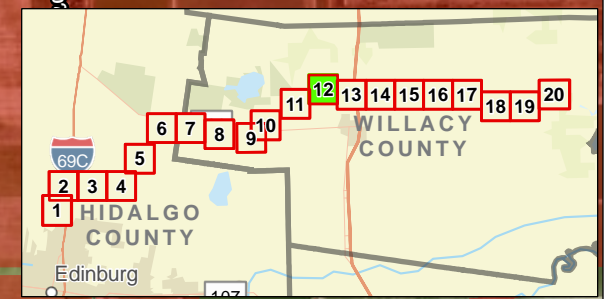
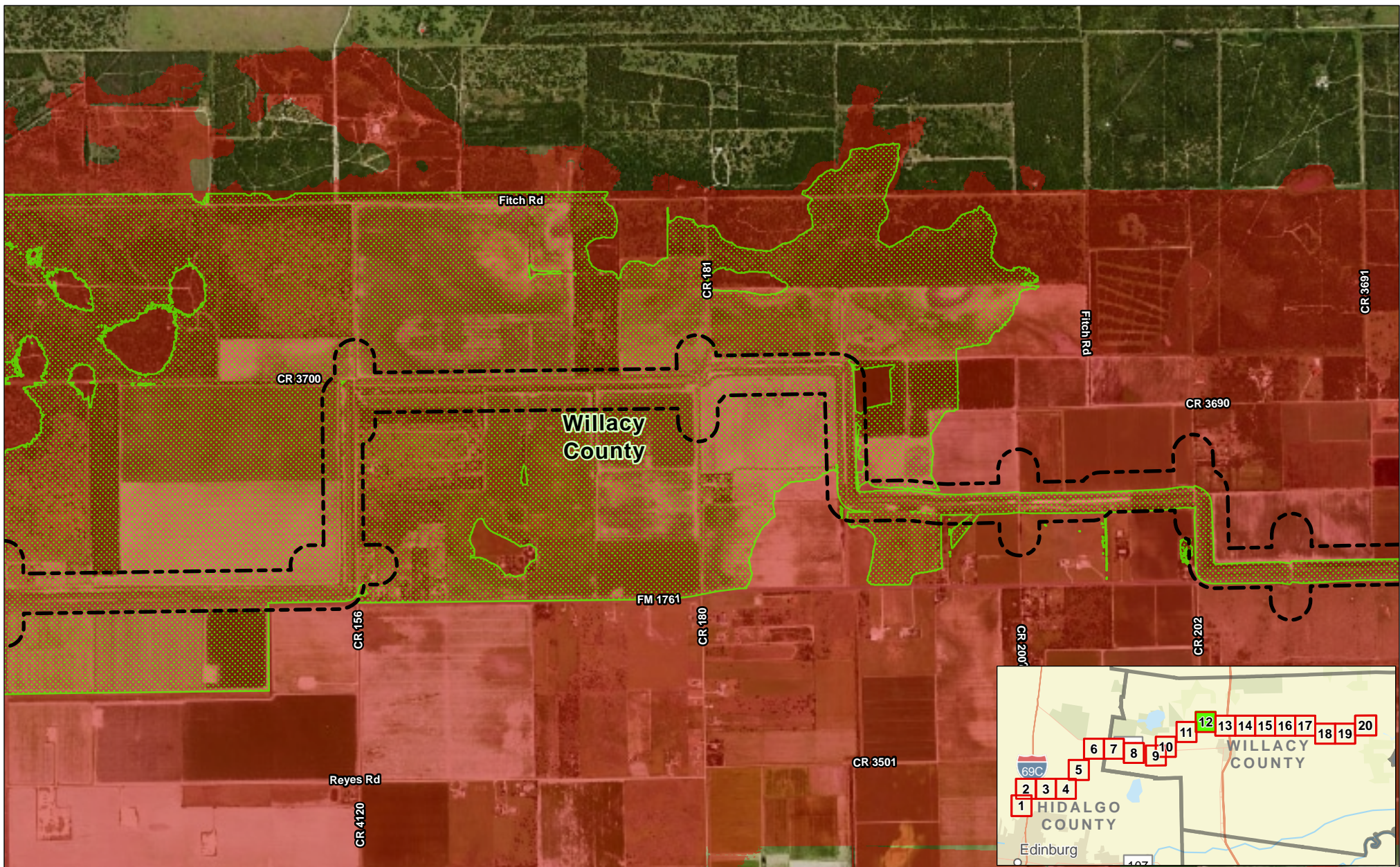
-  Alternative 1 Study Corridor
-  Proposed Flooding Envelope
-  Existing Flooding Envelope






**Exhibit 9A
Alternative 1
Flooding Envelope Map
Page 11 of 20
Raymondville Drain Project**

Author : Joel F. Aguirre Updated : 3/21/2024

DISCLAIMER: RRP Consulting Engineers makes no guarantees as to the accuracy of party data used in the construction of this map.



Legend:

-  Alternative 1 Study Corridor
-  Proposed Flooding Envelope
-  Existing Flooding Envelope

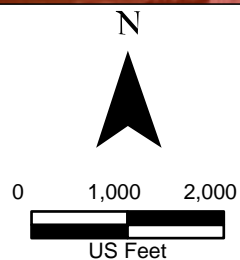
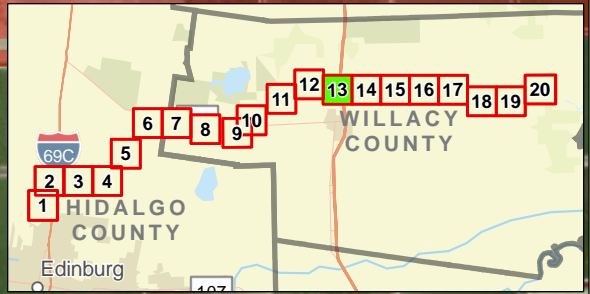
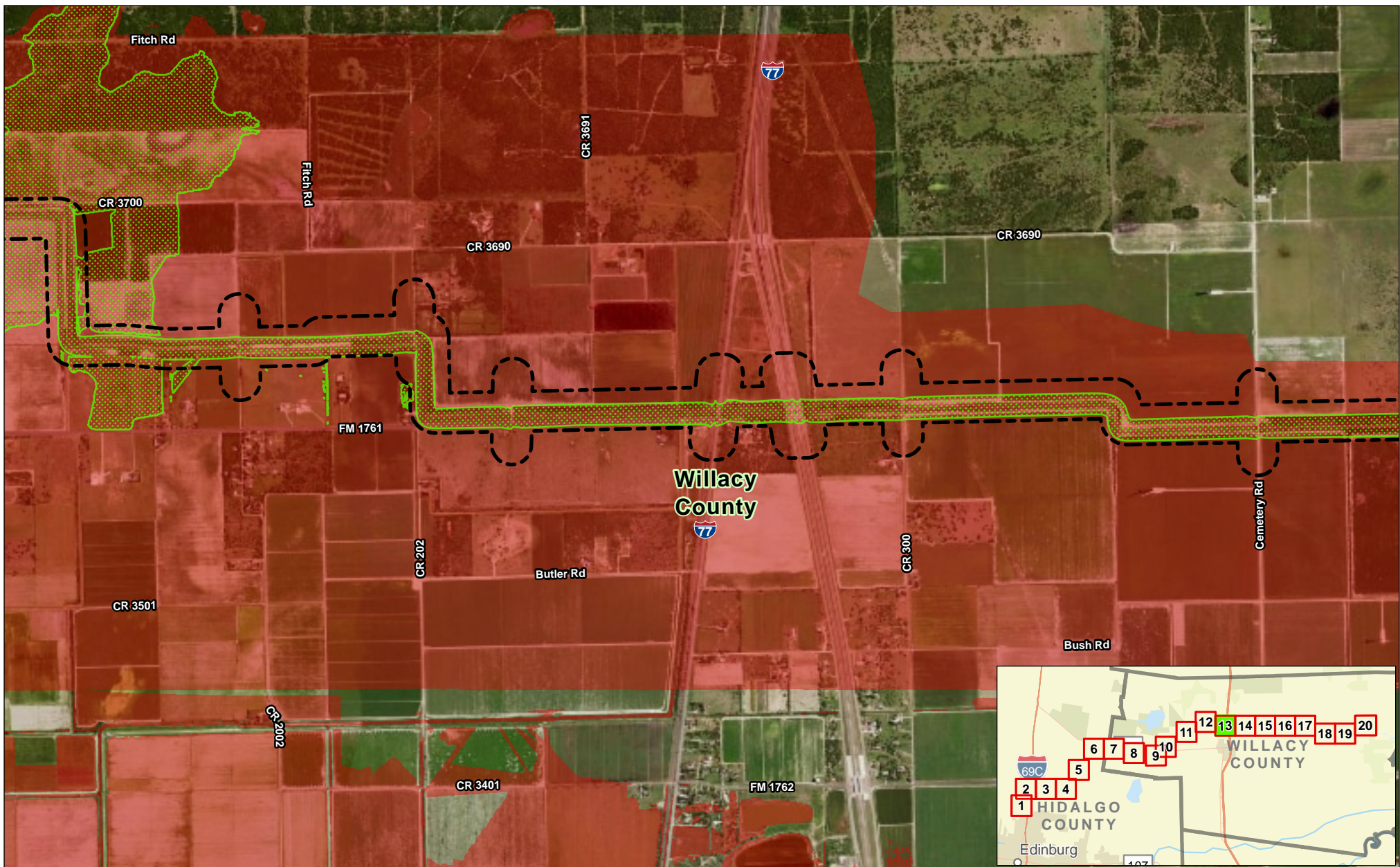





Exhibit 9A Alternative 1 Flooding Envelope Map Page 12 of 20 Raymondville Drain Project

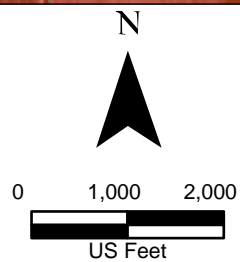
Author : Joel F. Aguirre Updated : 3/21/2024

DISCLAIMER: RRP Consulting Engineers makes no guarantees as to the accuracy of party data used in the construction of this map.



Legend:

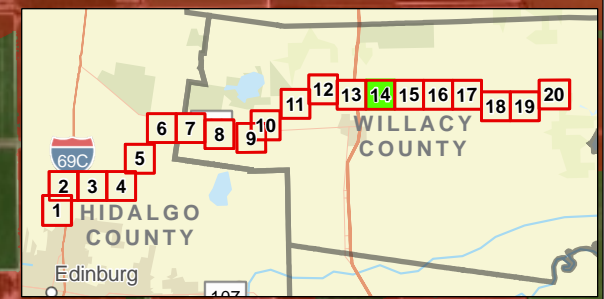
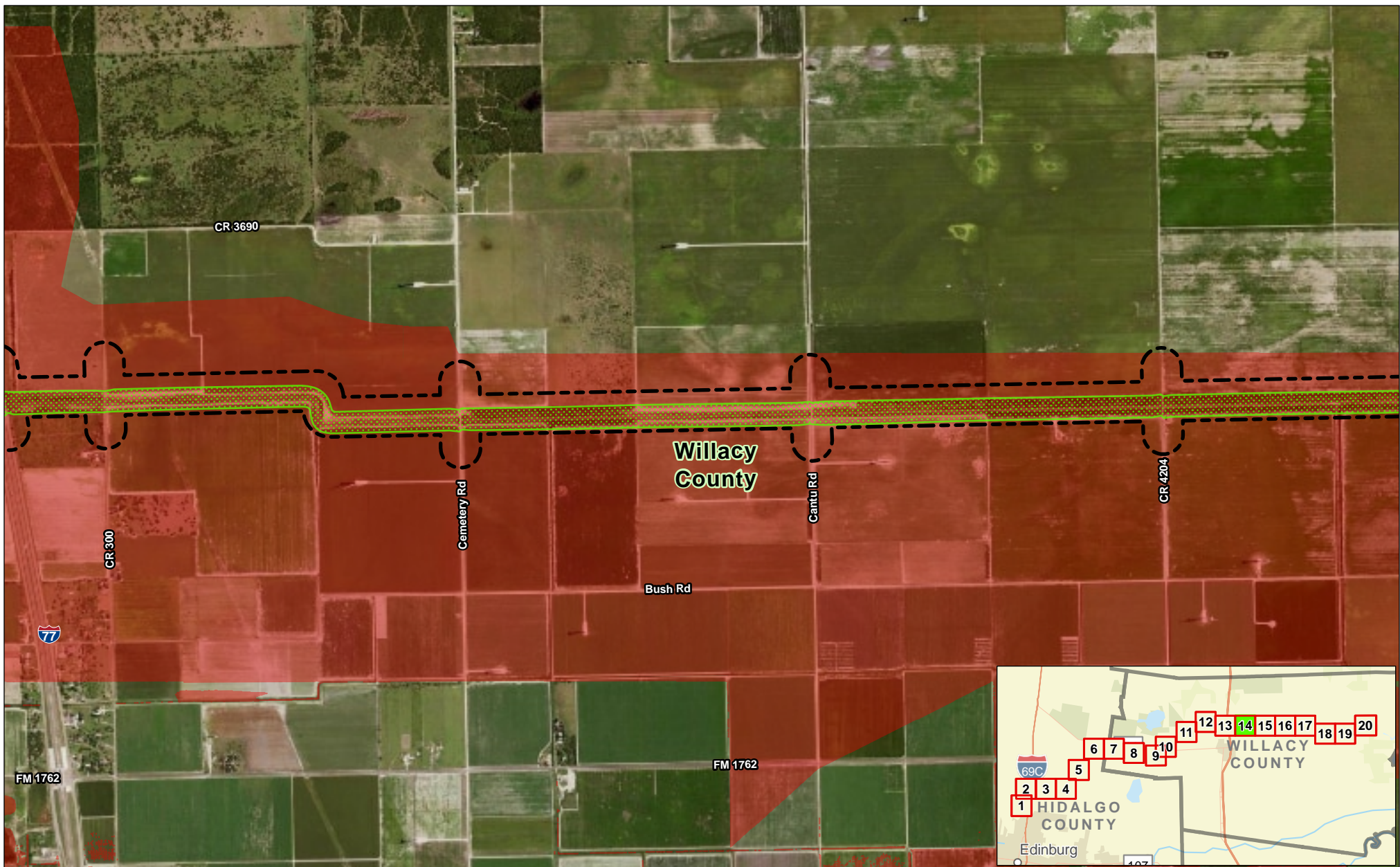
-  Alternative 1 Study Corridor
-  Proposed Flooding Envelope
-  Existing Flooding Envelope



**Exhibit 9A
Alternative 1
Flooding Envelope Map
Page 13 of 20
Raymondville Drain Project**

Author : Joel F. Aguirre Updated : 3/21/2024

DISCLAIMER: RRP Consulting Engineers makes no guarantees as to the accuracy of party data used in the construction of this map.



Legend:

- Alternative 1 Study Corridor
- Proposed Flooding Envelope
- Existing Flooding Envelope

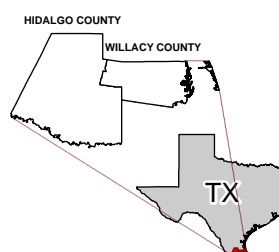
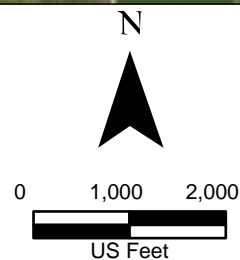
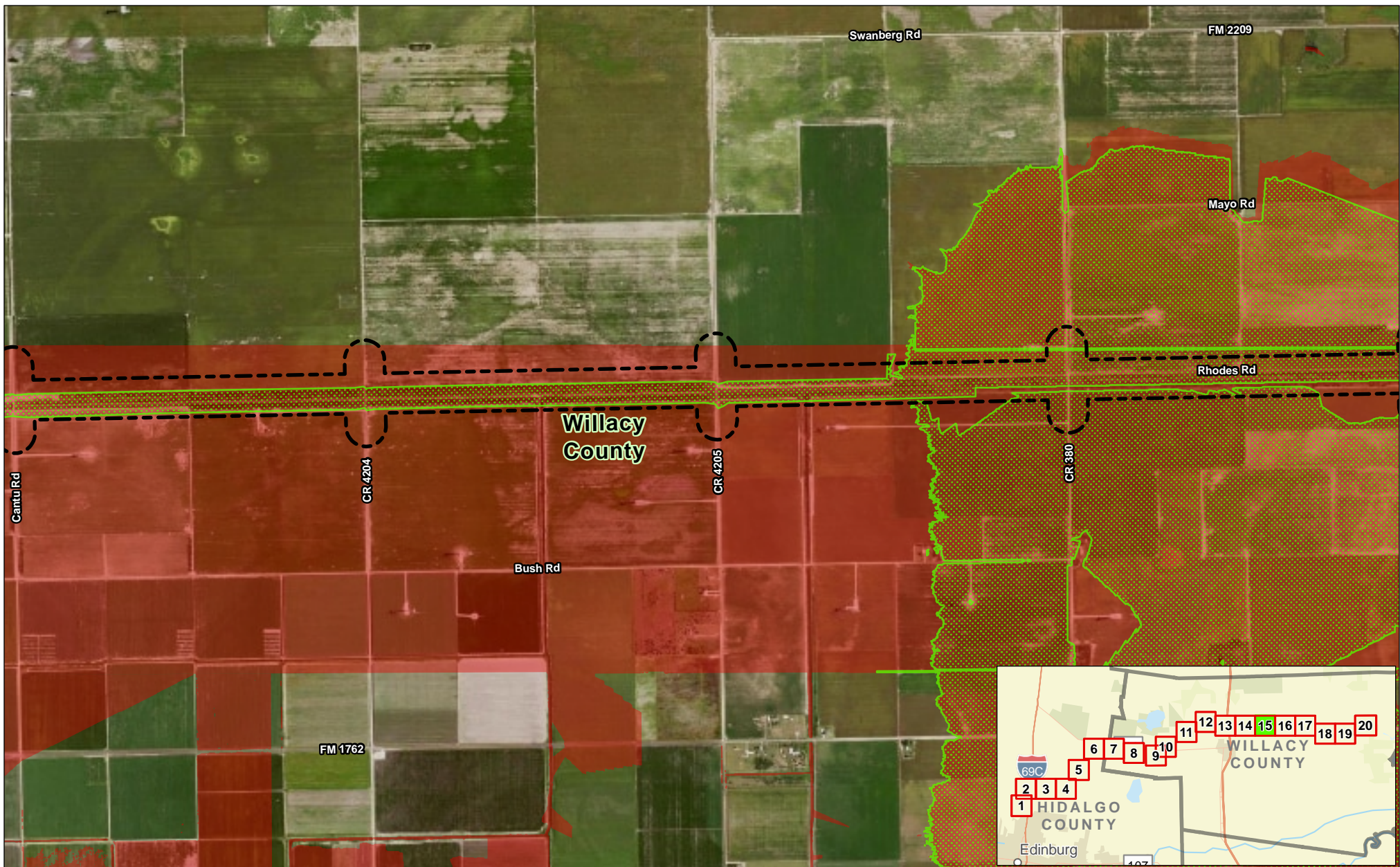


Exhibit 9A Alternative 1 Flooding Envelope Map Page 14 of 20 Raymondville Drain Project

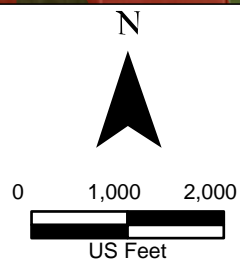
Author : Joel F. Aguirre Updated : 3/21/2024

DISCLAIMER: RRP Consulting Engineers makes no guarantees as to the accuracy of party data used in the construction of this map.



Legend:

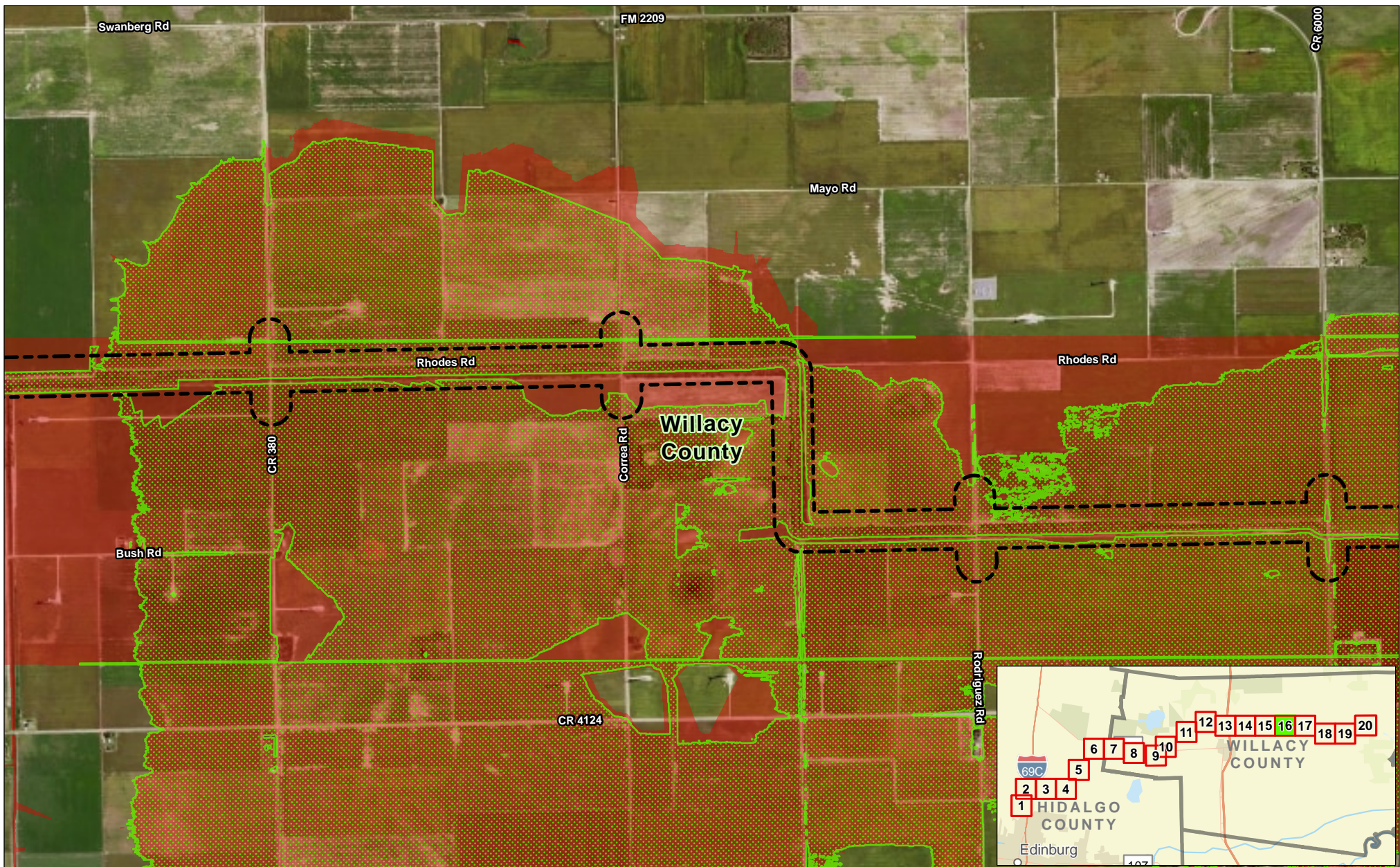
- Alternative 1 Study Corridor
- Proposed Flooding Envelope
- Existing Flooding Envelope






**Exhibit 9A
Alternative 1
Flooding Envelope Map
Page 15 of 20
Raymondville Drain Project**

Author : Joel F. Aguirre Updated : 3/21/2024

DISCLAIMER: RRP Consulting Engineers makes no guarantees as to the accuracy of party data used in the construction of this map.



Legend:

-  Alternative 1 Study Corridor
-  Proposed Flooding Envelope
-  Existing Flooding Envelope

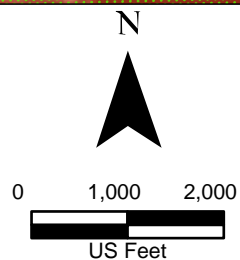
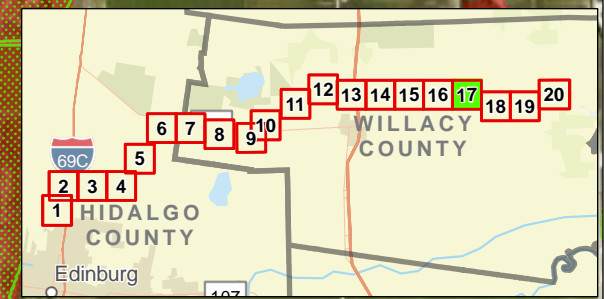
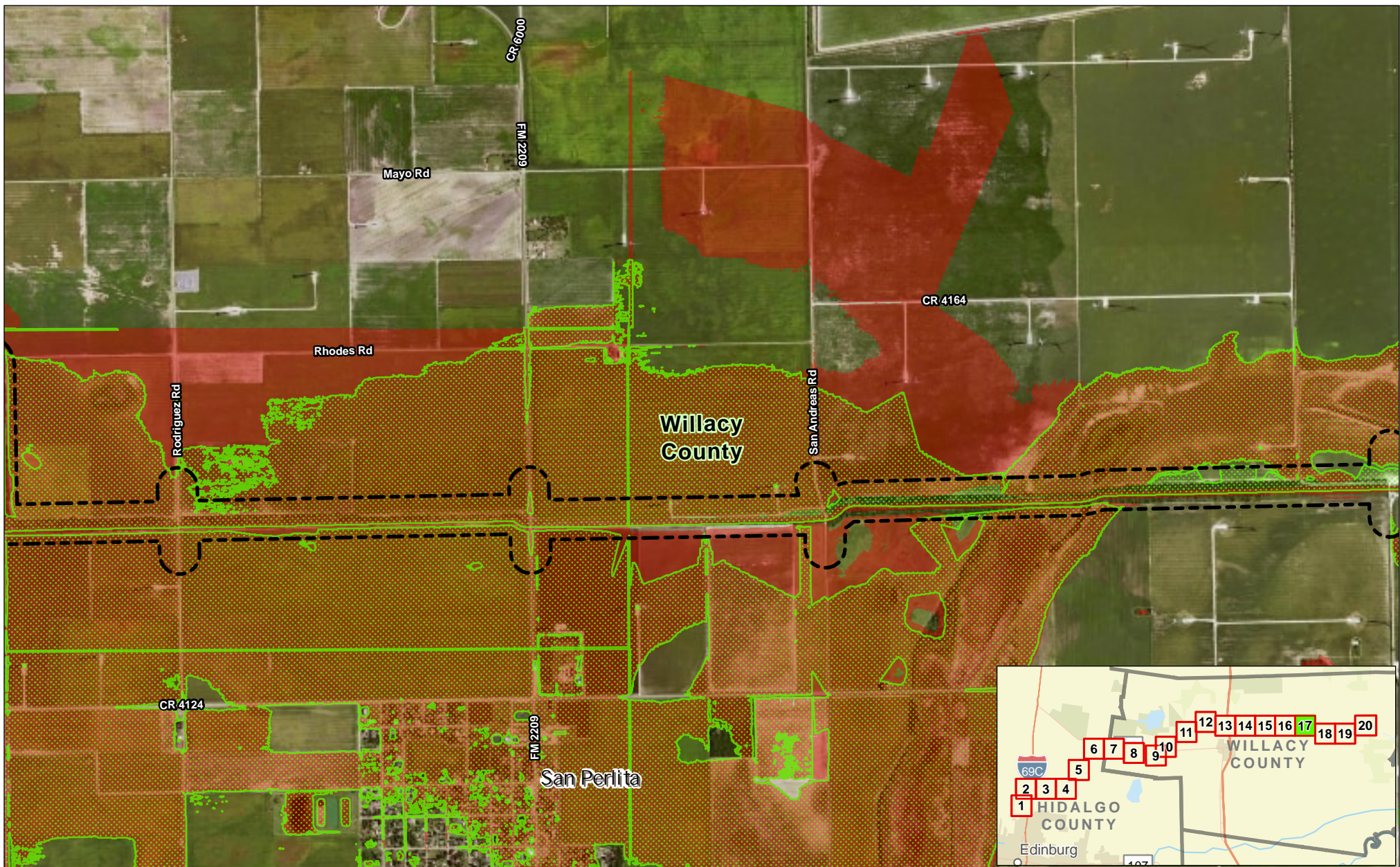





Exhibit 9A Alternative 1 Flooding Envelope Map Page 16 of 20 Raymondville Drain Project

Author : Joel F. Aguirre Updated : 3/21/2024

DISCLAIMER: RRP Consulting Engineers makes no guarantees as to the accuracy of party data used in the construction of this map.



Legend:

-  Alternative 1 Study Corridor
-  Proposed Flooding Envelope
-  Existing Flooding Envelope

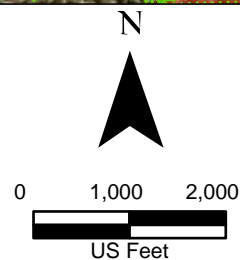
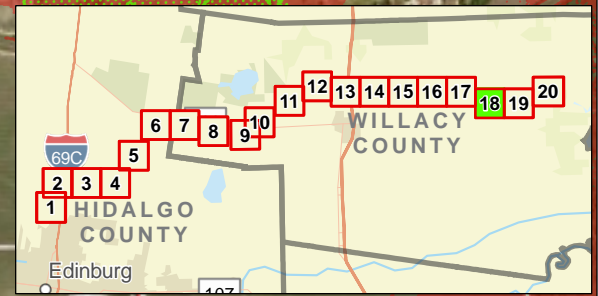
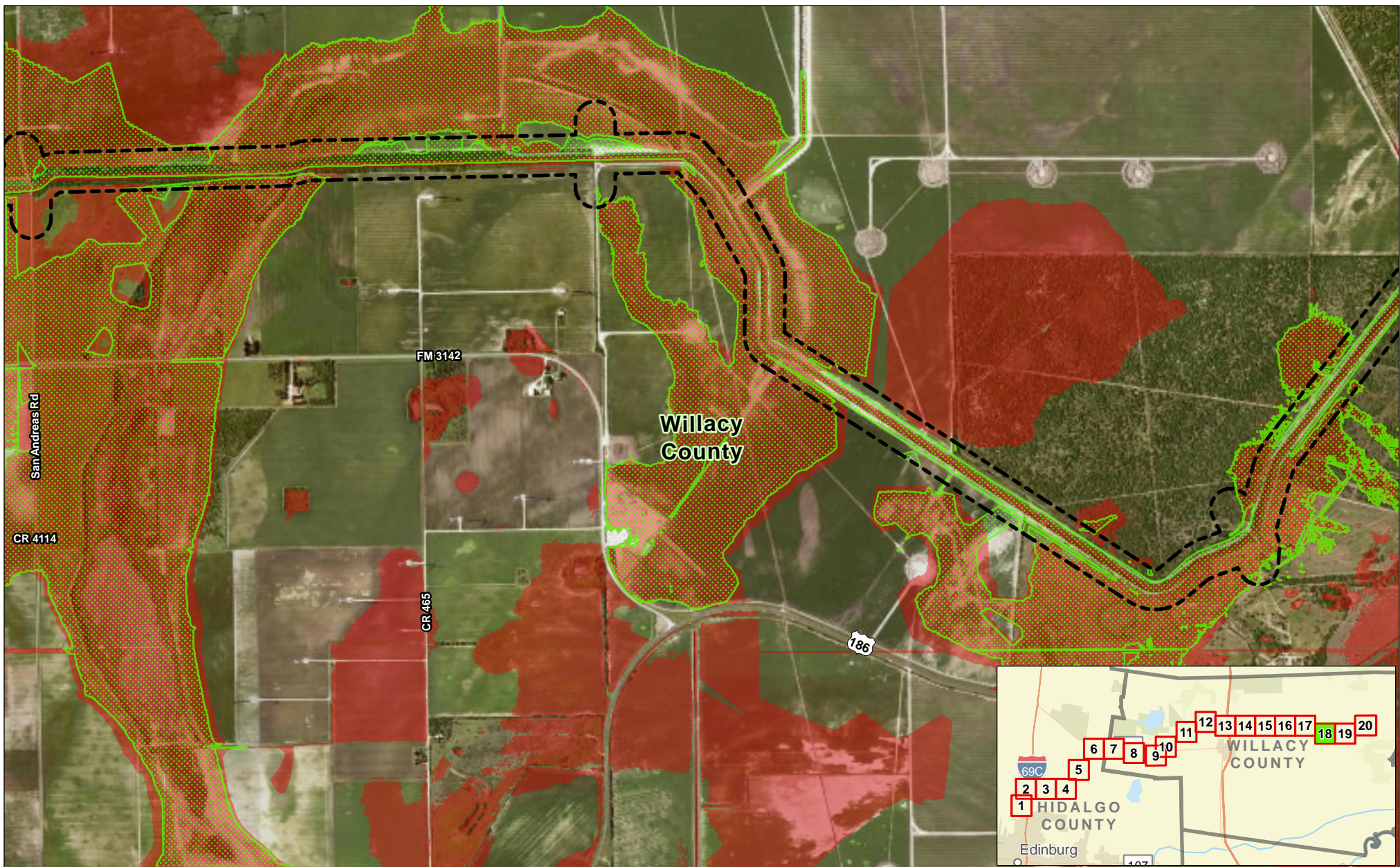





Exhibit 9A Alternative 1 Flooding Envelope Map Page 17 of 20 Raymondville Drain Project

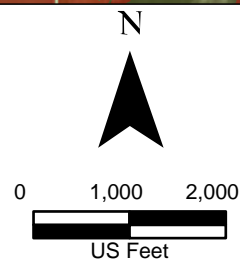
Author : Joel F. Aguirre Updated : 3/21/2024

DISCLAIMER: RRP Consulting Engineers makes no guarantees as to the accuracy of party data used in the construction of this map.



Legend:

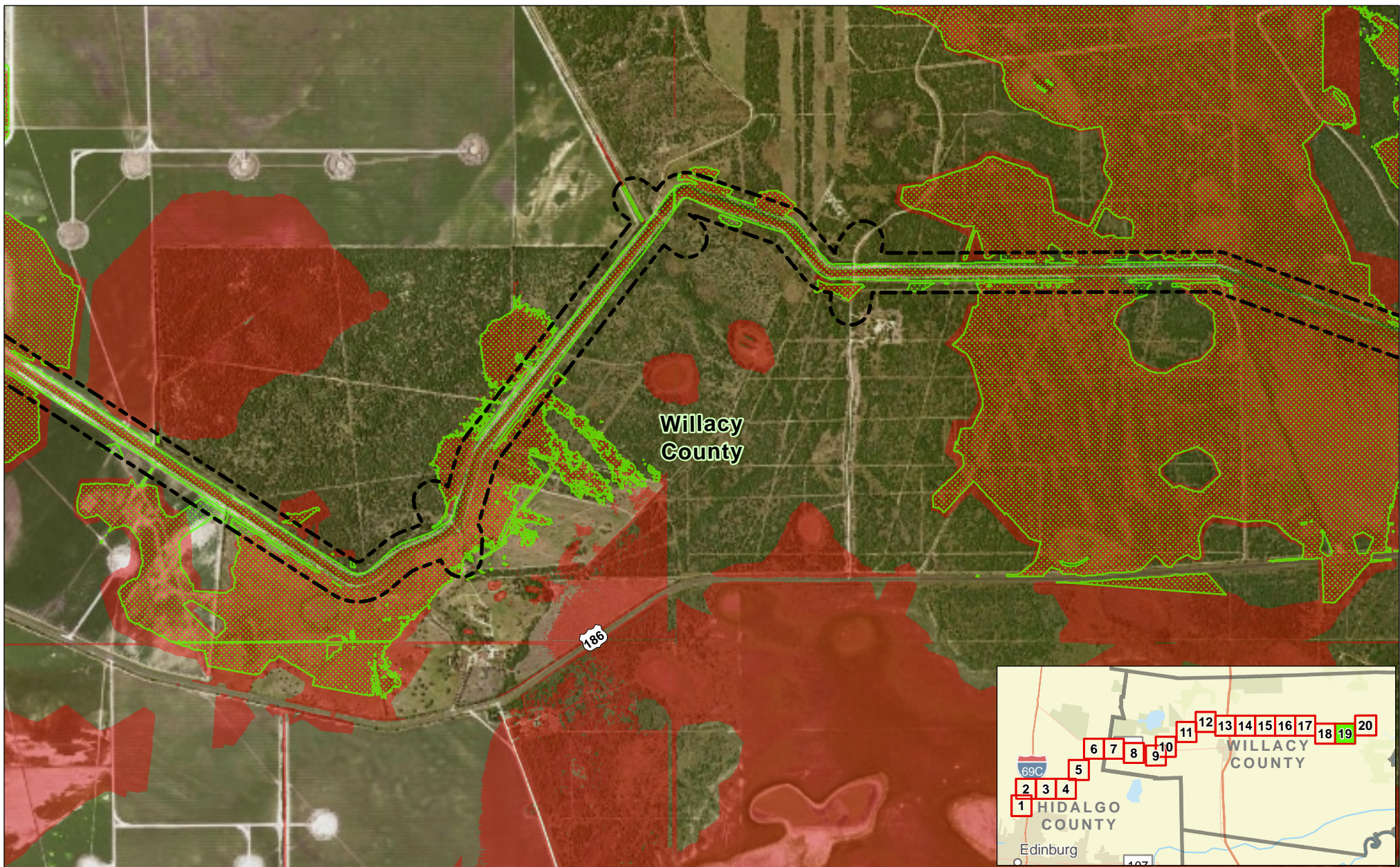
-  Alternative 1 Study Corridor
-  Proposed Flooding Envelope
-  Existing Flooding Envelope



**Exhibit 9A
Alternative 1
Flooding Envelope Map
Page 18 of 20
Raymondville Drain Project**

Author : Joel F. Aguirre Updated : 3/21/2024

DISCLAIMER: RRP Consulting Engineers makes no guarantees as to the accuracy of party data used in the construction of this map.



Legend:

- Alternative 1 Study Corridor
- Proposed Flooding Envelope
- Existing Flooding Envelope

Data Provenance: ESRI - NAIP Worldview Map (2022), J. Salinas (RRP): Flooding Envelope (2024)

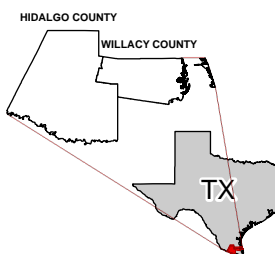
N



0 1,000 2,000



US Feet

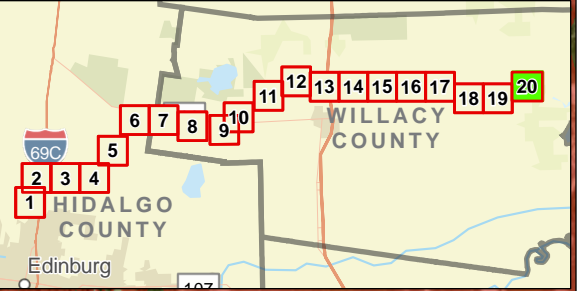
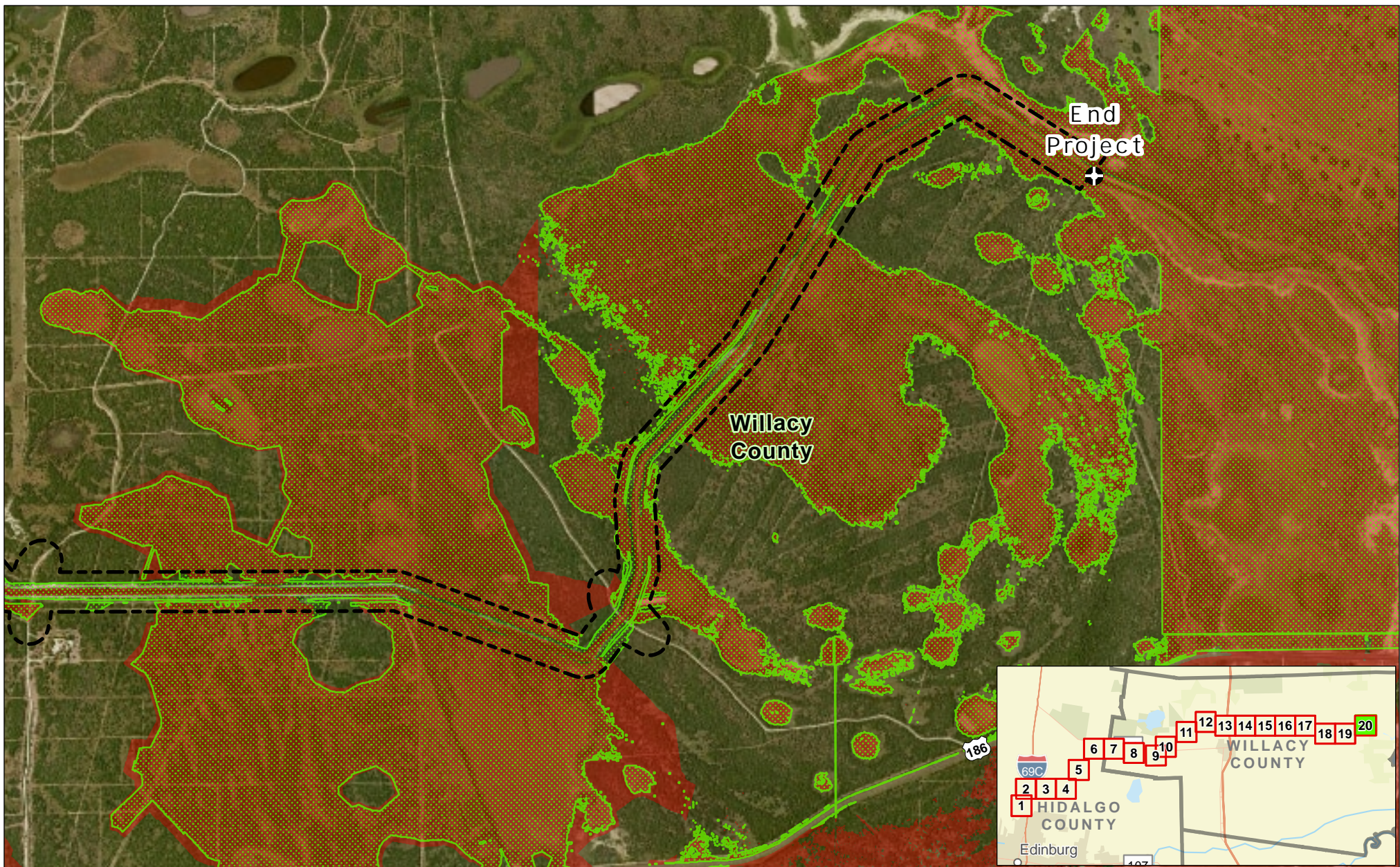


**Exhibit 9A
Alternative 1
Flooding Envelope Map
Page 19 of 20
Raymondville Drain Project**


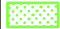

Author : Joel F. Aguirre Updated : 3/21/2024

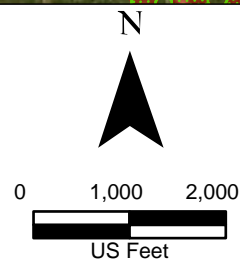
DISCLAIMER: RRP Consulting Engineers makes no guarantees as to the accuracy of party data used in the construction of this map.

Path: S:\projects\4408000_P\ProjectRepository\GIS\DWG_RRP_Flooding_Envelope_001124.aprx



Legend:

-  Alternative 1 Study Corridor
-  Proposed Flooding Envelope
-  Existing Flooding Envelope



**Exhibit 9A
Alternative 1
Flooding Envelope Map
Page 20 of 20
Raymondville Drain Project**

Author : Joel F. Aguirre Updated : 3/21/2024

DISCLAIMER: RRP Consulting Engineers makes no guarantees as to the accuracy of party data used in the construction of this map.